

Technical data sheet for Electric Tilting Bratt Pan 900mm

BPLB8080E, BPLB8080EE



BPLB8080E

SPECIFICATIONS

Elements

3 x 4kw stainless steel sheathed heating elements clad to pan base

Electrical requirements

12kW
400-415Vac, 50/60Hz, 3P+N+E
Phase loading

L1 17A

L2 17A

L3 17A

Pan

Cooking surface 780mm x 450mm,
3510cm²
215mm deep

Water connection

Cold water connection 270mm from side, 574mm from rear, and 252mm from floor

1/2" tube connection via 15mm crox fitting

550kpa, 80psi max water pressure

Electrical connection

60mm from LH side, 405mm from rear,
and 150mm from floor

Dimensions

Width 900mm
Depth 805mm
Height 915mm
Incl. low back 970mm
Incl. splashback option 1130mm
With lid open 1600mm

Nett weight

180kg

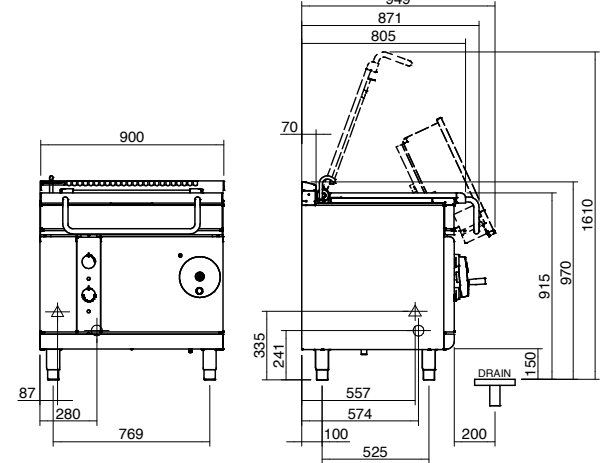
Packing data

1.03m³, 245kg
Width 945mm
Depth 870mm
Height 1255mm

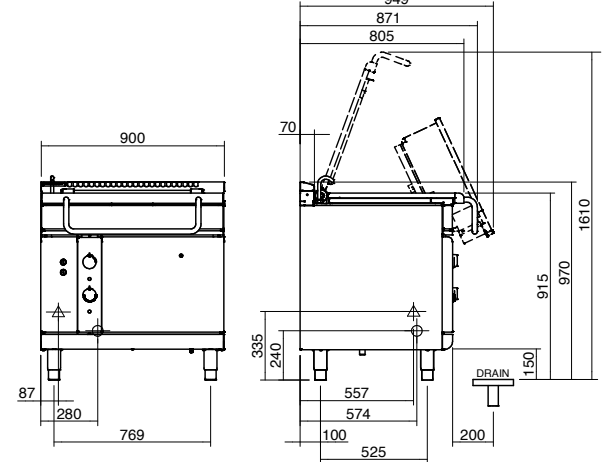
OPTIONS AT EXTRA COST

Joining caps
Plinth mounting

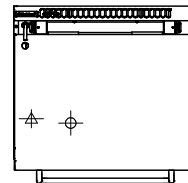
BPLB8080E



BPLB8080EE



PLAN



△ = ELECTRICAL CONNECTION POINT.
⊗ = WATER CONNECTION POINT.

Series Options

BPLB - Low back models

BPB - 215mm splashback option



Australia moffat.com.au

New Zealand moffat.co.nz

In line with policy to continually develop and improve its products, Moffat Limited reserves the right to change specifications and design without notice.



ISO9001
Quality
Management
Standard

an Ali Group Company



The Spirit of Excellence