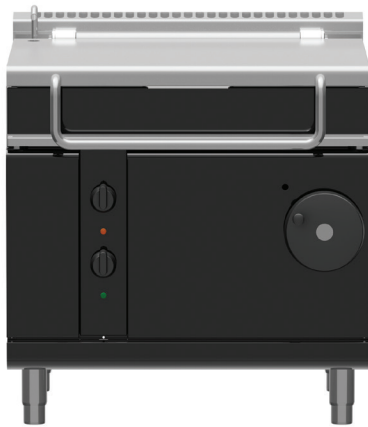


Technical data sheet for Gas Tilting Bratt Pan 900mm

BPLB8080G, BPLB8080GE



BPLB8080G

SPECIFICATIONS

Burner

Single 6 bar stainless steel burner
75MJ/hr

Gas power (gross)

75MJ/hr, 21kW

Pan

Cooking surface 780mm x 450mm,
3510cm²
215mm deep

Gas connection

R 3/4 (BSP) male, 60mm from LH
side, 305mm from rear, and 122mm
from floor

All units supplied with Natural and
LP gas regulator

Water connection

Cold water connection 270mm from
side, 574mm from rear, and 252mm
from floor

1/2" tube connection via 15mm crox
fitting

550kpa, 80psi max water pressure

Electrical connection

220-240Vac, 50/60Hz, 1A, 1P+N+E
3 pin 10A plug cordset fitted

Dimensions

Width 900mm
Depth 805mm
Height 915mm
Incl. low back 970mm
Incl. splashback option 1130mm
With lid open 1600mm

Nett weight

170kg

Packing data

1.03m³, 236kg
Width 945mm
Depth 870mm
Height 1255mm

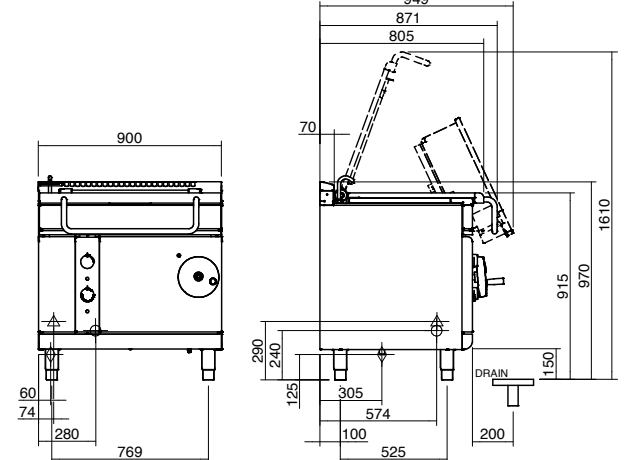
Gas types

Available in Natural gas and LP gas
Please specify when ordering
Units supplied complete with gas
type conversion kits
Other gas types on request

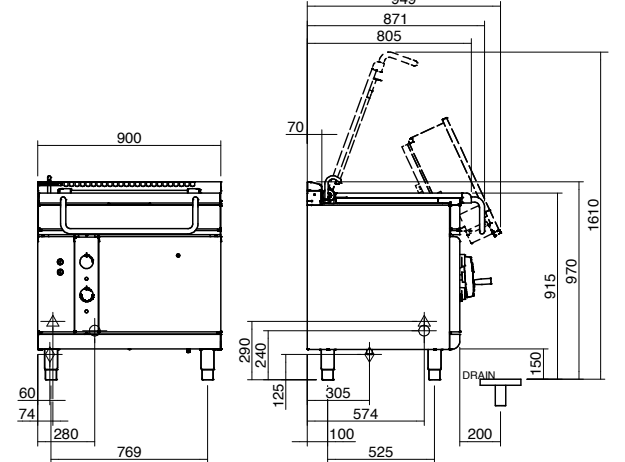
OPTIONS AT EXTRA COST

Joining caps
Plinth mounting

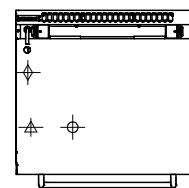
BPLB8080G



BPLB8080GE



PLAN



▲ = ELECTRICAL CONNECTION POINT.
 ◆ = GAS CONNECTION POINT.
 ⊕ = WATER CONNECTION POINT.

Series Options

BPLB - Low back models

BPB - 215mm splashback option



Australia moffat.com.au

New Zealand moffat.co.nz

In line with policy to continually develop and improve
its products, Moffat Limited reserves the right to
change specifications and design without notice.



ISO9001
Quality
Management
Standard

an Ali Group Company



The Spirit of Excellence