

Technical data sheet for ELECTRIC CHARGRILL 900mm

CH8900ED-B, CH8900ED-LS, CH8900ED-CB



CH8900ED-LS

SPECIFICATIONS

Elements

8 direct contact heating elements

Cooking area

730mm x 590mm, 4307cm²

Electrical requirements

13.4kW

400-415Vac, 50/60Hz, 3P+N+E

L1 15A

L2 22.5A

L3 22.5A

Electrical connection

130mm from LH side, 32mm from rear, and 655mm from floor

Dimensions

Bench models

Width 900mm

Depth 805mm

Height 355mm

Incl. splashback 570mm

Incl. low back 410mm

All models (excluding Bench model)

Width 900mm

Depth 805mm

Height 915mm

Incl. splashback 1130mm

Incl. low back 970mm

Nett weight

Bench and Leg Stand models

93kg

Cabinet Base models

126kg

Packing data

Bench and Leg Stand models

0.70m³, 128kg

Width 945mm

Depth 870mm

Height 855mm

Cabinet Base models

1.03m³, 193kg

Width 945mm

Depth 870mm

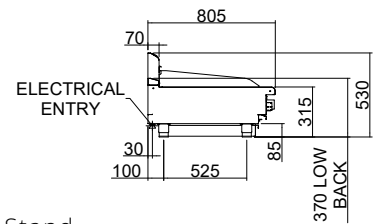
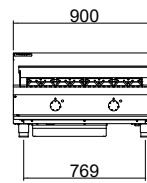
Height 1255mm

Options at extra cost

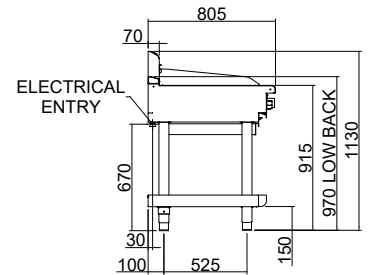
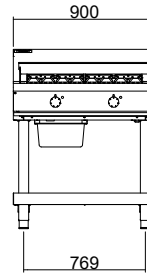
Castors

Plinth mounting

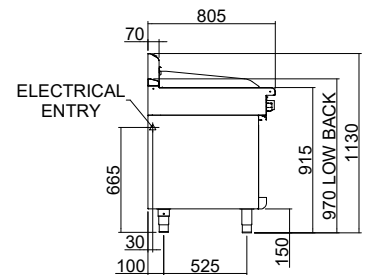
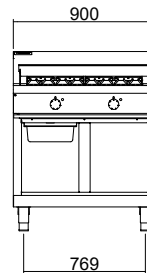
CH8900ED-B Bench Model



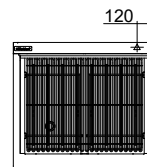
CH8900ED-LS Leg Stand



CH8900ED-CB Cabinet Base



CH8600ED



Australia moffat.com.au

New Zealand moffat.co.nz

In line with policy to continually develop and improve its products, Moffat Limited reserves the right to change specifications and design without notice.



ISO9001
Quality
Management
Standard

an Ali Group Company



The Spirit of Excellence