

Technical data sheet for Gas Chargrill 600mm

CHLB8600G-B, CHLB8600G-LS, CHLB8600G-CD



CHLB8600G-CD

SPECIFICATIONS

Burners

33MJ/hr 304 stainless steel
U-burner per 300mm section

Gas power (gross)

66MJ/hr, 18.3kW

Cooking surface area

592mm x 500mm, 2960cm²

Gas connection

R ¾ (BSP) male

216mm from LH side, 32mm from
rear, and 555mm from floor

All units supplied with Natural and
LP gas regulator

Dimensions

Width 600mm

Depth 805mm

Height 915mm

Incl. low back 970mm

(Bench models 470mm)

Incl. splashback option 1130mm

(Bench models 630mm)

Nett weight

Bench/Leg Stand models

128kg

Cabinet Base model

130kg

Packing data

Bench/Leg Stand models

0.48m³, 171kg

Width 645mm

Depth 870mm

Height 855mm

Cabinet Base model

0.70m³, 189kg

Width 645mm

Depth 870mm

Height 1255mm

Gas types

Available in Natural gas and LP gas

Please specify when ordering

Units supplied complete with gas

type conversion kits

Other gas types on request

OPTIONS AT EXTRA COST

Griddle plates 300mm drop on

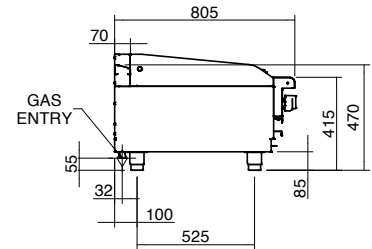
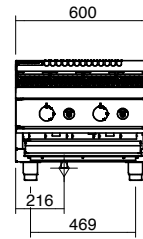
Joining caps

Castors

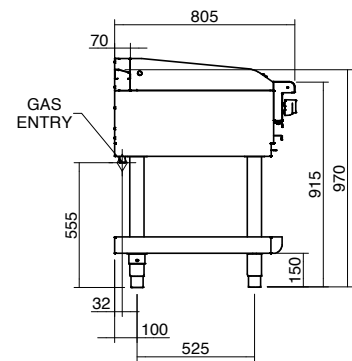
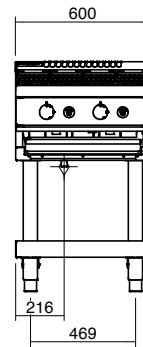
Plinth mounting

Straight grates

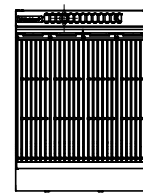
CHLB8600G-B



CHLB8600G-LS/CD



CH8600G



Series Options

CHLB - Low back models

CHB - 215mm splashback option



Australia moffat.com.au

New Zealand moffat.co.nz

In line with policy to continually develop and improve
its products, Moffat Limited reserves the right to
change specifications and design without notice.



ISO9001
Quality
Management
Standard

an Ali Group Company



The Spirit of Excellence