

Technical data sheet for

# Blue Seal Electric Combi Steamer

## SAPIENS BOOSTED E21BSD 20 x 1/1 GN



### Dimensions

Width	892mm
Depth	862mm
Height	1812mm
Weight	273kg

### Packed dimensions

Width	1100mm
Depth	110mm
Height	2040mm
Weight	316kg

### Shelves

1/1 GN	20
Shelf Spacings	63mm

### Installation requirements

(for precise installation instructions, please refer to the unit's installation manual).

### Power connection requirements

Multi pole circuit breaker and all pole disconnection isolator switch installed near the appliance.

### Supply line voltage

400-415V ~ 50Hz, 3P+N+E  
Special voltage options available on request.

### Power connection

Total (kW)	37.2
Convection power (kW)	36
Rated Current (A) (400V)	58

### Installation clearances

- Rear 65mm
- Right 500mm
- Left 50mm

\*Clearance required on fixed installations for service accessibility.

If heat sources are located near the RH side of the Sapiens combi, ensure that a minimum distance of 400mm is maintained.

Install in accordance with local body regulations only on horizontal surfaces and not against combustible walls.

### Water connection requirements

- Cold water
- Flow pressure (200-500kPa)
- Min. Water Flow 10 l/min
- Soft water connection\*
- Shut-off valve with return flow inhibitor and dirt filter
- Water supply R3/4
- R50 waste water connection

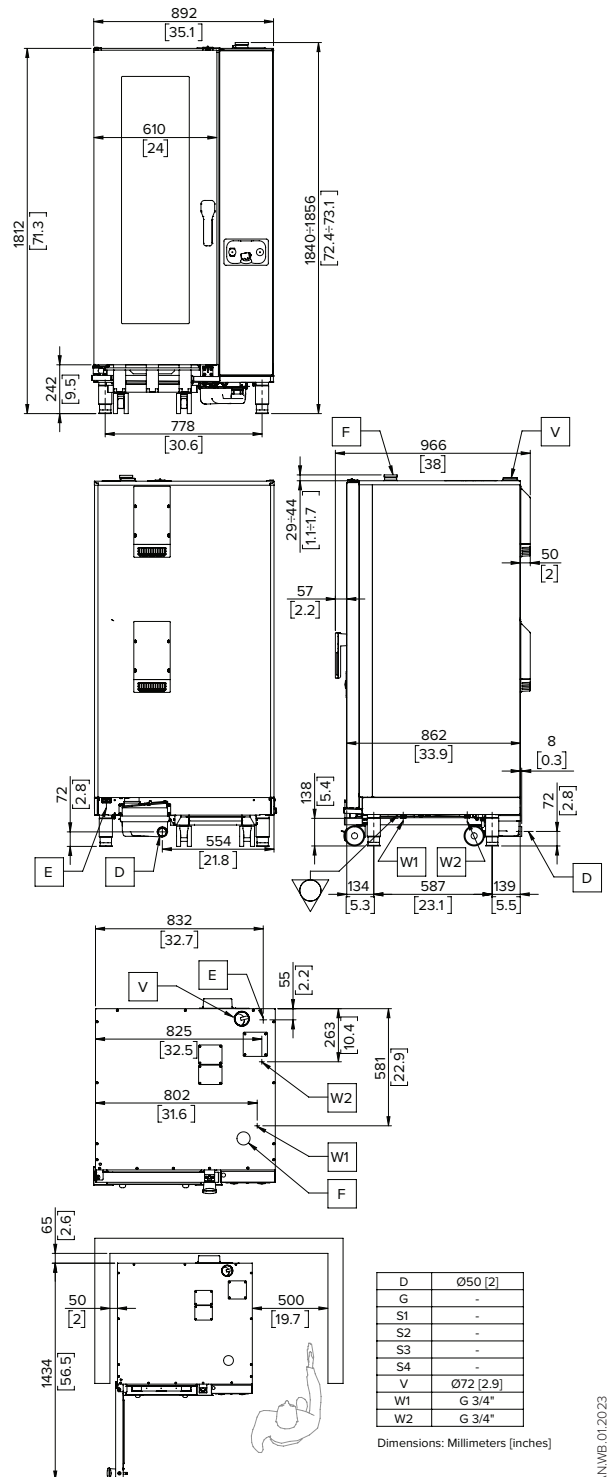
### Water quality

Total Water hardness	60-90ppm
pH	>7.5
Cl (chloride)	max. 30 mg/l
Cl2 (free chlorine)	max. 0.1 mg/l
Fe (Iron)	max. 0.1 mg/l
NH2Cl (monochloramine)	0.2 mg/l
Cold water temperature	max. 30°C
Softener water temperature	max. 50°C
Electrical conductivity	50 – 200 µS/cm

(\*Water treatment may be required. Please refer to installation manual.)

### Emissions

Latent heat	6696W
Sensible heat	4464W
Waste water max discharge temp	138°C
Noise during operation	<50 dBA



Australia [moffat.com.au](http://moffat.com.au)

New Zealand [moffat.co.nz](http://moffat.co.nz)

In line with policy to continually develop and improve its products, Moffat Limited reserves the right to change specifications and design without notice.

an Ali Group Company



The Spirit of Excellence