

Technical data sheet for
ELECTRIC COOKTOPS 900mm - SEALED HOBS

E516S-B, E516S-LS, E516S-CB, E516S-RB



E516S-LS

SPECIFICATIONS

Cooktop

2.6 kW Cast Iron Hot Plate elements

Electrical requirements

E516S
 15.6 kW, 400-415Vac, 50/60Hz,
 3P+N+E, 22A

Refrigerated Base

Type Ventilated system
 Refrigerant R134a (160grams)
 Climate classification T - tropical

Electrical connection

220-240Vac, 50Hz, 1.8A, 1P+N+E
 3 pin plug 10A cordset fitted

Dimensions

Bench models

Width 900mm
 Depth 812mm
 Height 315mm
 Incl. splashback 485mm

All models (excluding Bench model)

Width 900mm
 Depth 812mm
 Height 915mm
 Incl. splashback 1085mm

Nett weight

Bench and Leg Stand models
 90kg
 Cabinet Base and Refrigerated
 Base models
 130kg

Packing data

Bench and Leg Stand models

0.55m³, 135kg
 Width 945mm
 Depth 870mm

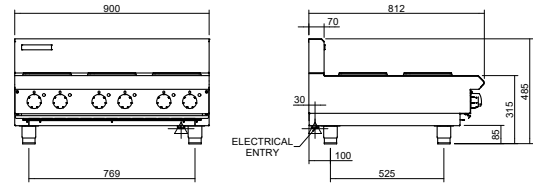
Height 665mm
 Cabinet Base and Refrigerated
 Base models

1.03m³, 195kg
 Width 945mm
 Depth 870mm
 Height 1255mm

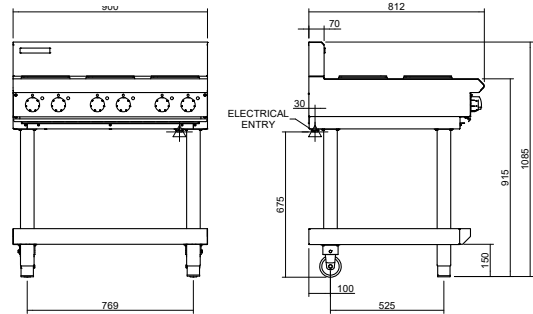
Options

Adjustable feet at rear

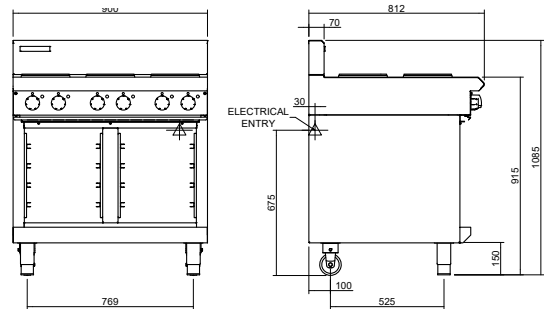
E516S-B



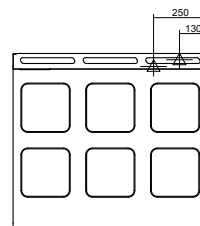
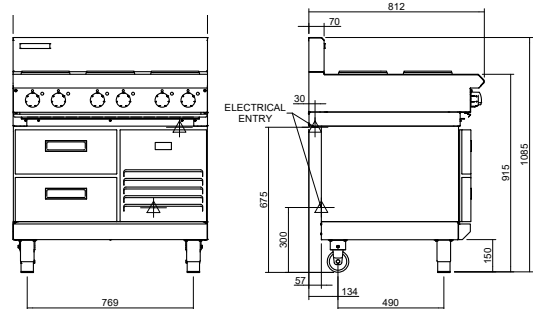
E516S-LS



E516S-CB



E516S-RB



Australia moffat.com.au
 New Zealand moffat.co.nz

In line with policy to continually develop and improve its products, Moffat Limited reserves the right to change specifications and design without notice.



an Ali Group Company



The Spirit of Excellence