

Technical data sheet for

ELECTRIC CHARGRILL 600mm

E594D-B, E594D-LS, E594D-CB



E594D-LS

SPECIFICATIONS

Elements

5 direct contact heating elements

Cooking area

450mm x 590mm, 2655cm²

Electrical requirements

8.4kW
400-415Vac, 50/60Hz, 3P+N+E
L1 11A
L2 11A
L3 15A

Electrical connection

130mm from LH side, 30mm from rear, 635mm from floor

Dimensions

Bench model
Width 600mm
Depth 812mm
Height 355mm
Incl. splashback option 525mm
All models (excluding Bench model)
Width 600mm
Depth 812mm
Height 915mm
Incl. splashback option 1085mm

Nett weight

Bench and Leg Stand models
68kg
Cabinet Base models
70kg

Packing data

Bench and Leg Stand models

0.37m³, 99kg

Width 645mm

Depth 870mm

Height 665mm

Cabinet Base models

0.70m³, 127kg

Width 645mm

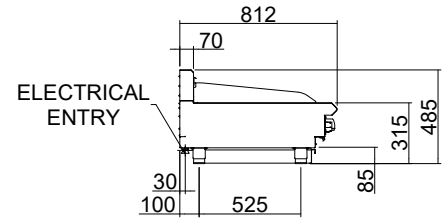
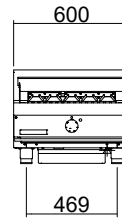
Depth 870mm

Height 1255mm

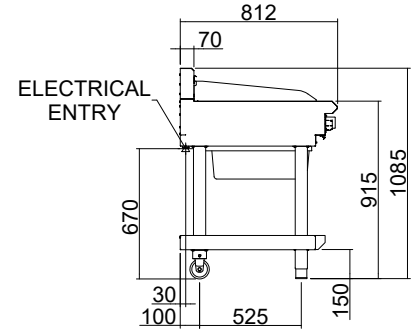
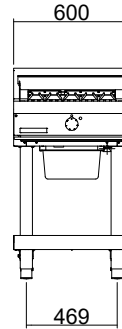
Options

Adjustable feet at rear
Castors

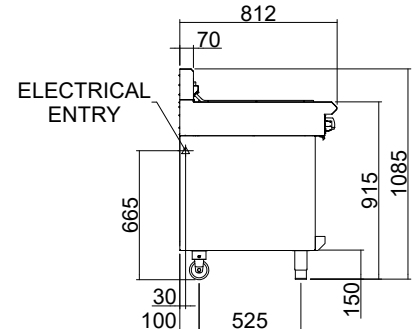
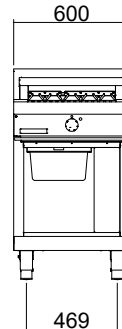
E594D-B



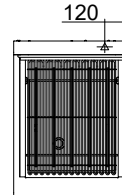
E594D-LS



E594D-CB



E594D



Australia moffat.com.au

New Zealand moffat.co.nz

In line with policy to continually develop and improve its products, Moffat Limited reserves the right to change specifications and design without notice.



ISO9001
Quality
Management
Standard