

Technical data sheet for

ELECTRIC CHARGRILL 900mm

E596D-B, E596D-LS, E596D-CB



E596D-LS

SPECIFICATIONS

Elements

8 direct contact heating elements

Cooking area

730mm x 590mm, 4307cm²

Electrical requirements

13.4kW

400-415Vac, 50/60Hz, 3P+N+E

L1 15A

L2 22.5A

L3 22.5A

Electrical connection

130mm from LH side, 30mm from rear, 635mm from floor

Dimensions

Bench model

Width 900mm

Depth 812mm

Height 915mm

Incl. splashback option 525mm

All models (excluding Bench model)

Width 900mm

Depth 812mm

Height 915mm

Incl. splashback option 1085mm

Nett weight

Bench and Leg Stand models

93kg

Cabinet Base models

126kg

Packing data

Bench and Leg Stand models

0.55m³, 138kg

Width 945mm

Depth 870mm

Height 665mm

Cabinet Base models

1.03m³, 193kg

Width 945mm

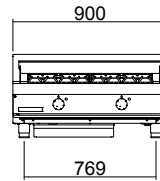
Depth 870mm

Height 1255mm

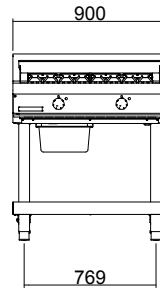
Options

Adjustable feet at rear
Castors

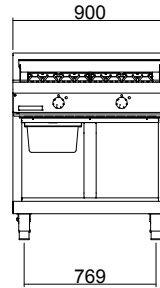
E596D-B



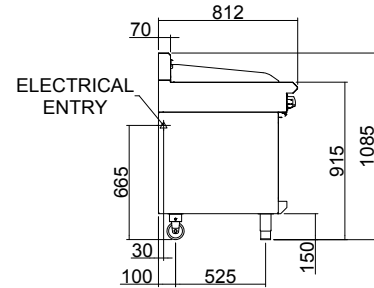
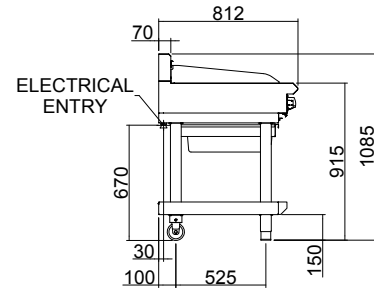
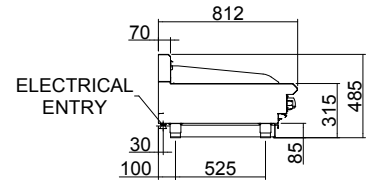
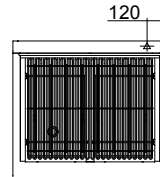
E596D-LS



E596D-CB



E594D



Australia moffat.com.au

New Zealand moffat.co.nz

In line with policy to continually develop and improve its products, Moffat Limited reserves the right to change specifications and design without notice.



ISO9001
Quality
Management
Standard

an Ali Group Company



The Spirit of Excellence