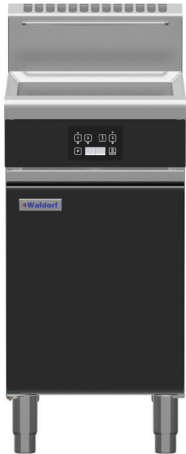


Technical data sheet for

Single Pan Gas Fryer 450mm

FNLB8120GE



FNLB8120GE

SPECIFICATIONS

Production rate

31kg/hr

Pan Size

Oil capacity 20L (37lbs shortening)

Width 365mm

Length 380mm

Oil frying depth 95mm

Baskets

2 chrome plated wire baskets

140mm W x 335mm D x 145mm H

Stainless steel perforated basket support plate

Burners

2 x 45MJ/hr infra-red burners

Gas power (gross)

90MJ/hr, 25kW

Gas connection

R ¾ (BSP) male

300mm from RH side, 35mm from rear, and 125mm from floor

Optional rear connection (refer specification drawing)

All units incorporate Natural and LP gas regulator

Electrical Connection

230-240 Vac, 1P+N+E, 50Hz, 0.5A

3 pin 10A cordset fitted

Dimensions

Width 450mm

Depth 805mm

Height 915mm

Incl. low back 1085mm

Incl. splashback option 1130mm

Nett weight

81kg nett

Packing data

0.54m³, 122kg

Width 870mm

Depth 495mm

Height 1255mm

Gas types

Available in Natural gas and LP gas

Please specify when ordering

Units supplied complete with gas

type conversion kits

Other gas types on request

OPTIONS AT EXTRA COST

Waldorf Filtamax filtration system

Fish plates

Extra baskets

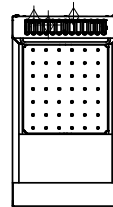
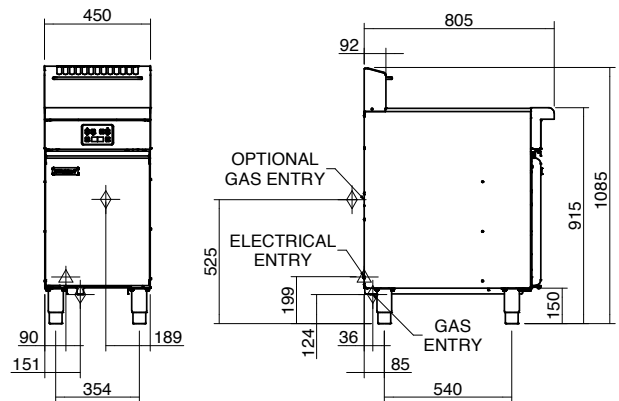
Side splash guards

Joining caps

Castors

Plinth mounting

FNLB8120GE



Series Options

FNLB - Low back models

FNB - 215mm splashback option



Australia moffat.com.au

New Zealand moffat.co.nz

In line with policy to continually develop and improve its products, Moffat Limited reserves the right to change specifications and design without notice.



ISO9001
Quality
Management
Standard

an Ali Group Company



The Spirit of Excellence