

Technical data sheet for Twin Pan Gas Fryer 450mm

FNLB8226GE



FNLB8226GE

SPECIFICATIONS

Production rate

31kg/hr

Pan Size

Oil capacity 13L (24lbs shortening)
per pan

Width 175mm

Length 380mm

Oil frying depth 95mm

Baskets

2 chrome plated wire baskets
140mm W x 335mm D x 145mm H
Stainless steel perforated basket
support plate

Burners

1 x 45MJ/hr infra-red burner per pan

Gas power (gross)

90MJ/hr, 25kW

Gas connection

R ¾ (BSP) male
300mm from RH side, 35mm from
rear, and 125mm from floor
Optional rear connection
(refer specification drawing)
All units incorporate Natural and
LP gas regulator

Electrical Connection

230-240 Vac, 1P+N+E, 50Hz, 0.5A
3 pin 10A cordset fitted

Dimensions

Width 450mm

Depth 805mm

Height 915mm

Incl. low back 1085mm

Incl. splashback option 1130mm

Nett weight

88kg nett

Packing data

0.54m³, 129kg

Width 870mm

Depth 495mm

Height 1255mm

Gas types

Available in Natural gas and LP gas

Please specify when ordering

Units supplied complete with gas

type conversion kits

Other gas types on request

OPTIONS AT EXTRA COST

Waldorf Filtamax filtration system

Fish plates

Extra baskets

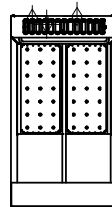
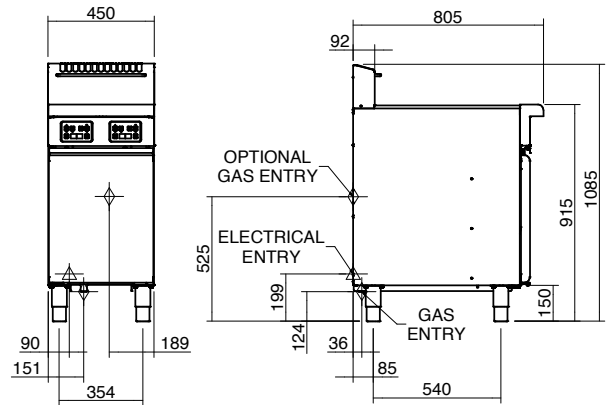
Side splash guards

Joining caps

Castors

Plinth mounting

FNLB8226GE



Series Options

FNLB - Low back models

FNB - 215mm splashback option



Australia moffat.com.au

New Zealand moffat.co.nz

In line with policy to continually develop and improve
its products, Moffat Limited reserves the right to
change specifications and design without notice.



ISO9001
Quality
Management
Standard

an Ali Group Company



The Spirit of Excellence