

Technical data sheet for Gas Griddle 1200mm

GPLB8120G-B, GPLB8120G-LS, GPLB8120G-CD, GPLB8120G-RB



GPLB8120G-CD

SPECIFICATIONS

Burner

Three 3 bar chromed steel burners
Individual pilot, flame failure and
piezo ignition

Gas power (gross)

108MJ/hr, 30kW

Plate

Cooking surface 1192mm x 530mm,
6318cm²

Gas connection

R ¾ (BSP) male
130mm from RH side, 35mm from
rear, and 655mm from floor
All units supplied with Natural and
LP gas regulator

Refrigerated base

Type Ventilated system
Refrigerant R134a (160grams)
Climate classification T – tropical
Electrical connection
220-240Vac, 50Hz, 1.8A, 1P+N+E
3 pin 10A plug cordset fitted

Dimensions

Bench models

Width 1200mm
Depth 805mm
Height 315mm
Incl. low back 370mm
Incl. splashback option 530mm

Series Options

GPLB - Low back models
GPB - 215mm splashback option



Australia moffat.com.au

New Zealand moffat.co.nz

In line with policy to continually develop and improve
its products, Moffat Limited reserves the right to
change specifications and design without notice.

All models (excluding Bench model)

Width 1200mm
Depth 805mm
Height 915mm
Incl. low back 970mm
Incl. splashback option 1130mm

Nett weight

Bench and Leg Stand models
196kg
Cabinet Base and Refrigerated
Base models
242kg

Packing data

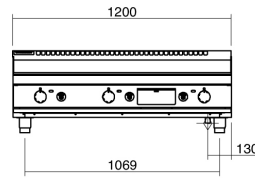
Bench model
0.72m³, 276kg
Width 1245mm
Depth 870mm
Height 665mm
All models (excluding Bench model)
1.36m³, 322kg
Width 1245mm
Depth 870mm
Height 1255mm

Gas types

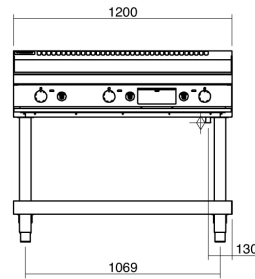
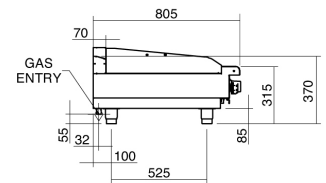
Available in Natural gas and LP gas
Please specify when ordering
Units supplied complete with gas
type conversion kits
Other gas types on request

OPTIONS AT EXTRA COST

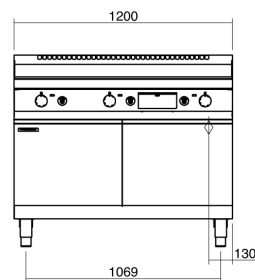
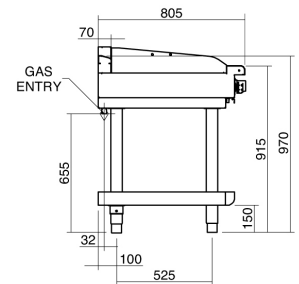
Joining caps
Castors
Plinth mounting
Ribbed plate options
Chromed plate options



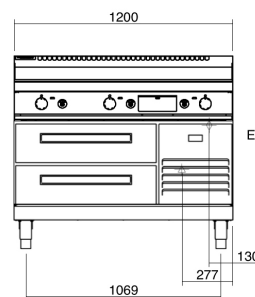
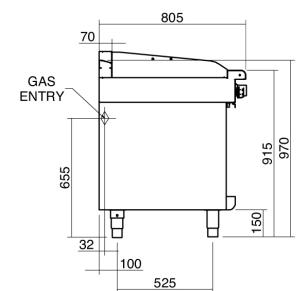
GPLB8120G-B



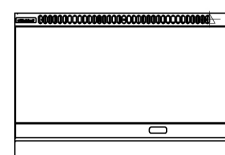
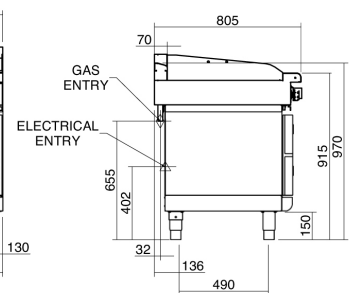
GPLB8120G-LS



GPLB8120G-CD



GPLB8120G-RB



GPLB8120G



ISO9001
Quality
Management
Standard

an Ali Group Company



The Spirit of Excellence