

# Technical data sheet for Gas Griddle 600mm

GPLB8600G-B, GPLB8600G-LS, GPLB8600G-CD



GPLB8600G-CD

## SPECIFICATIONS

### Burner

4 bar chromed steel burner with pilot, flame failure and piezo ignition

### Gas power (gross)

53MJ/hr, 14.7kW

### Plate

Cooking surface 592mm x 530mm, 3138cm<sup>2</sup>

### Gas connection

R ¾ (BSP) male  
130mm from RH side, 35mm from rear, and 655mm from floor  
All units supplied with Natural and LP gas regulator

### Dimensions

#### Bench models

Width 600mm

Depth 805mm

Height 315mm

Incl. low back 370mm

Incl. splashback option 530mm

#### All models (excluding Bench model)

Width 600mm

Depth 805mm

Height 915mm

Incl. low back 970mm

Incl. splashback option 1130mm

### Nett weight

**Bench and Leg Stand models**

108kg

**Cabinet Base model**

133kg

### Packing data

**Bench model**

0.37m<sup>3</sup>, 160kg

Width 645mm

Depth 870mm

Height 665mm

**All models (excluding Bench model)**

0.70m<sup>3</sup>, 185kg

Width 645mm

Depth 870mm

Height 1255mm

### Gas types

Available in Natural gas and LP gas

Please specify when ordering

Units supplied complete with gas

type conversion kits

Other gas types on request

### OPTIONS AT EXTRA COST

Joining caps

Castors

Plinth mounting

Ribbed plate options

Chromed plate options

### Series Options

GPLB - Low back models

GPB - 215mm splashback option



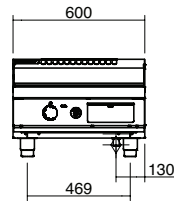
Australia [moffat.com.au](http://moffat.com.au)

New Zealand [moffat.co.nz](http://moffat.co.nz)

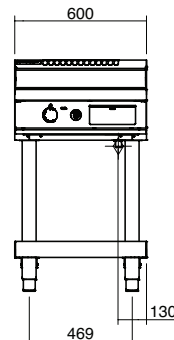
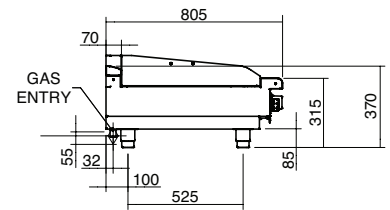
In line with policy to continually develop and improve its products, Moffat Limited reserves the right to change specifications and design without notice.



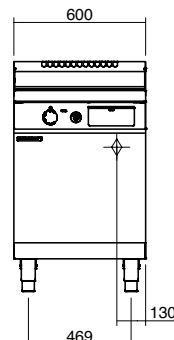
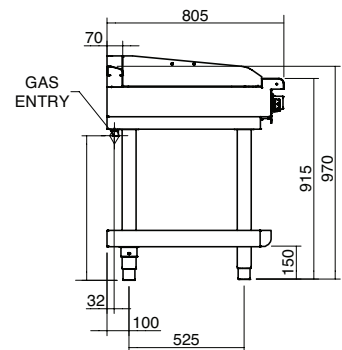
ISO9001  
Quality  
Management  
Standard



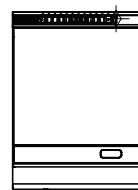
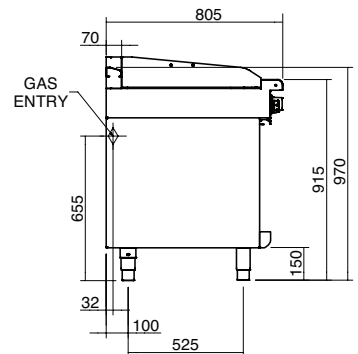
GPLB8600G-B



GPLB8600G-LS



GPLB8600G-CD



GPLB8600G