

Technical data sheet for Electric Griddle 900mm

GPLB8900E-B, GPLB8900E-LS, GPLB8900E-CD, GPLB8900E-RB



GPLB8900E-CD

SPECIFICATIONS

Griddle

Elements
6 x 2kW stainless steel sheathed heating elements

Electrical requirements

12kW
400-415Vac, 50/60Hz, 3P+N+E

Phase loading

L1 16.6A

L2 16.6A

L3 16.6A

Plate

Cooking surface 892mm x 530mm,
4728cm²

Electrical connection

130mm from LH side, 32mm from rear, and 655mm from floor

Refrigerated base

Type Ventilated system
Refrigerant R134a (160grams)
Climate classification T – tropical
Electrical connection
220-240Vac, 50Hz, 1.8A, 1P+N+E
3 pin 10A plug cordset fitted

Series Options

GPLB - Low back models

GPB - 215mm splashback option



Australia moffat.com.au

New Zealand moffat.co.nz

In line with policy to continually develop and improve its products, Moffat Limited reserves the right to change specifications and design without notice.

Dimensions

Bench models

Width 900mm

Depth 805mm

Height 315mm

Incl. low back 370mm

Incl. splashback option 530mm

All models (excluding Bench model)

Width 900mm

Depth 805mm

Height 915mm

Incl. low back 970mm

Incl. splashback option 1130mm

Nett weight

Bench and Leg Stand models

125kg

Cabinet Base and Refrigerated

Base models

158kg

Packing data

Bench model

0.55m³, 170kg

Width 945mm

Depth 870mm

Height 665mm

All models (excluding Bench model)

1.03m³, 223kg

Width 945mm

Depth 870mm

Height 1255mm

OPTIONS AT EXTRA COST

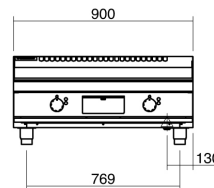
Joining caps

Castors

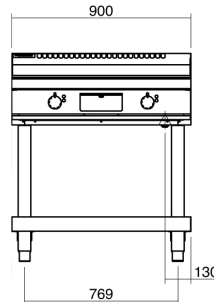
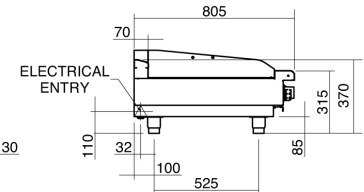
Plinth mounting

Ribbed plate options

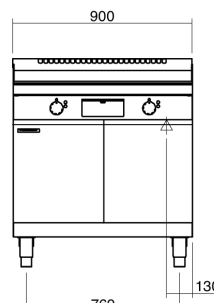
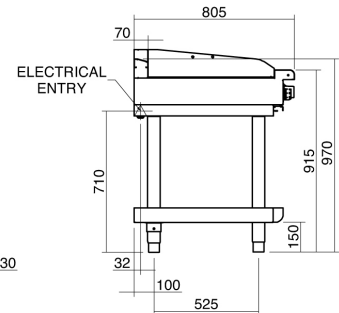
Chromed plate options



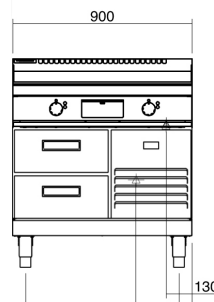
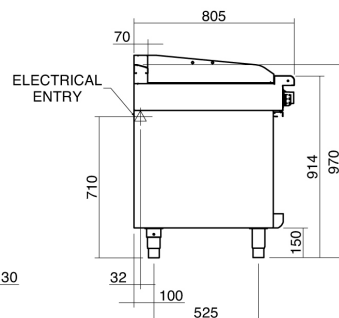
GPLB8900E-B



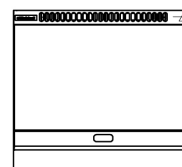
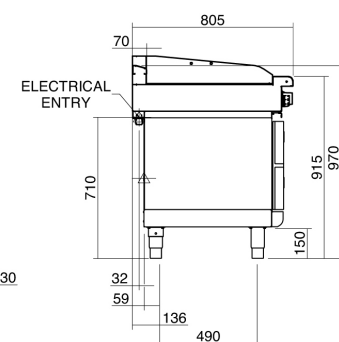
GPLB8900E-LS



GPLB8900E-CD



GPLB8900E-RB



GPLB8900E



ISO9001
Quality
Management
Standard

an Ali Group Company



The Spirit of Excellence