

Technical data sheet for Gas Griddle 900mm

GPLB8900G-B, GPLB8900G-LS, GPLB8900G-CD, GPLB8900G-RB



GPLB8900G-CD

SPECIFICATIONS

Burner

Two 3 bar chromed steel burners
Individual pilot, flame failure and
piezo ignition

Gas power (gross)

80MJ/hr, 22.2kW

Plate

Cooking surface 892mm x 530mm,
4728cm²

Gas connection

R ¾ (BSP) male
130mm from RH side, 35mm from
rear, and 655mm from floor
All units supplied with Natural and
LP gas regulator

Refrigerated base

Type Ventilated system
Refrigerant R134a (160grams)
Climate classification T – tropical
Electrical connection
220-240Vac, 50Hz, 1.8A, 1P+N+E
3 pin 10A plug cordset fitted

Dimensions

Bench models

Width 900mm
Depth 805mm
Height 315mm
Incl. low back 370mm
Incl. splashback option 530mm

Series Options

GPLB - Low back models
GPB - 215mm splashback option



Australia moffat.com.au

New Zealand moffat.co.nz

In line with policy to continually develop and improve
its products, Moffat Limited reserves the right to
change specifications and design without notice.



ISO9001
Quality
Management
Standard

All models (excluding Bench model)

Width 900mm
Depth 805mm
Height 915mm
Incl. low back 970mm
Incl. splashback option 1130mm

Nett weight

Bench and Leg Stand models
157kg
Cabinet Base and Refrigerated
Base models
200kg

Packing data

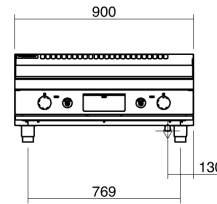
Bench model
0.55m³, 222kg
Width 945mm
Depth 870mm
Height 665mm
All models (excluding Bench model)
1.03m³, 265kg
Width 945mm
Depth 870mm
Height 1255mm

Gas types

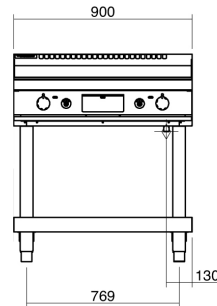
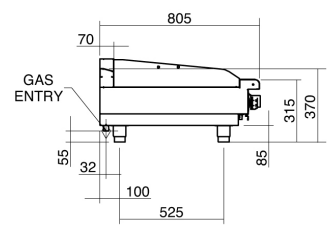
Available in Natural gas and LP gas
Please specify when ordering
Units supplied complete with gas
type conversion kits
Other gas types on request

OPTIONS AT EXTRA COST

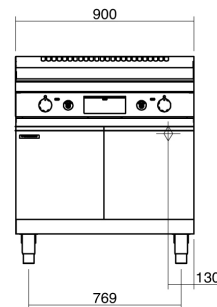
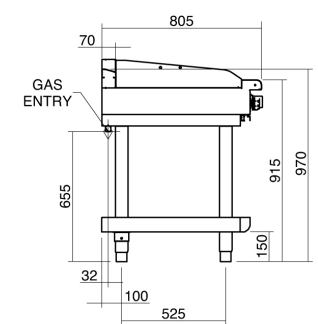
Joining caps
Castors
Plinth mounting
Ribbed plate options
Chromed plate options



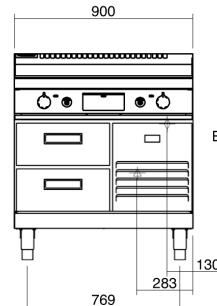
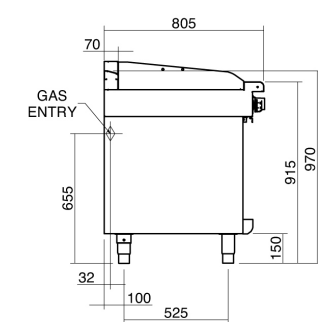
GPLB8900G-B



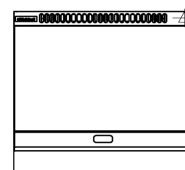
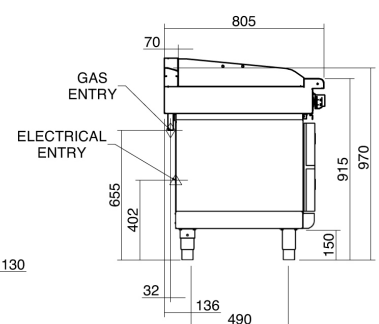
GPLB8900G-LS



GPLB8900G-CD



GPLB8900G-RB



GPLB8900G