

Technical data sheet for
INDUCTION COOKTOP 900mm

- FULL AREA INDUCTION ZONE

IN8400F-B, IN8400F-LS, IN8400F-CB



IN8400F-LS



SPECIFICATIONS

Cooktop

4 x 5.0kW full area induction zones
 270mm square induction zones

Electrical requirements

IN8400F
 20kW, 400-415V, 50/60Hz, 3P+E
 28A / phase

Dimensions

Bench model
 Width 900mm
 Depth 805mm
 Height 355mm
 Incl. splashback 570mm
 Incl. low back 410mm
All models (excluding Bench model)
 Width 900mm
 Depth 805mm
 Height 915mm
 Incl. splashback 1130mm
 Incl. low back 970mm

Nett weight

105kg

Packing data

1.03m³, 157kg
 Width 945mm
 Depth 865mm
 Height 1255mm

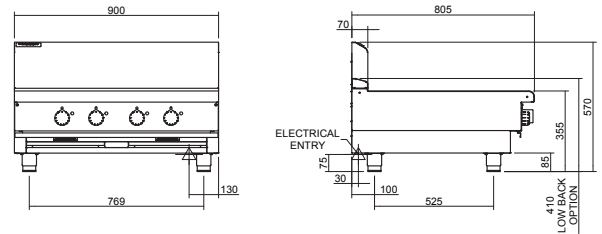
Options at extra cost

Castors
 Plinth mounting

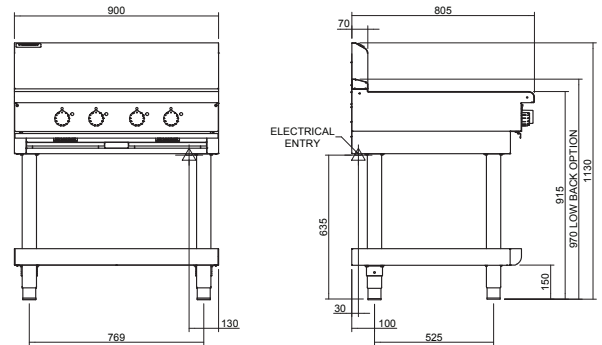
Series Options

- IN - Standard splashback models
- INL - Low back models
- INB - Bold vitreous enamel colour front finish on standard splashback models
- INLB - Bold vitreous enamel colour front finish on low back models

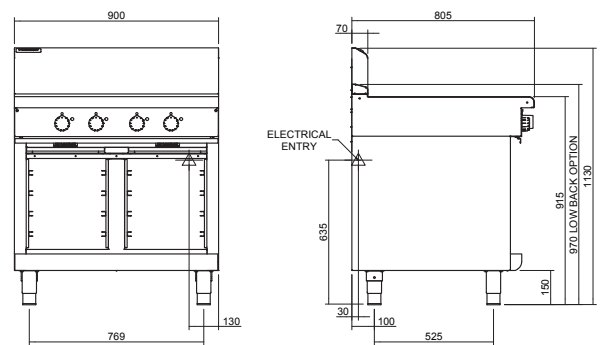
IN8400F-B Bench Model



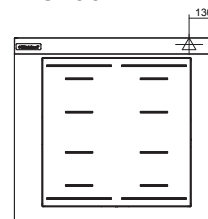
IN8400F-LS Leg Stand



IN8400F-CB Cabinet Base



IN8400F



Australia moffat.com.au
 New Zealand moffat.co.nz

In line with policy to continually develop and improve its products, Moffat Limited reserves the right to change specifications and design without notice.



an Ali Group Company



The Spirit of Excellence