

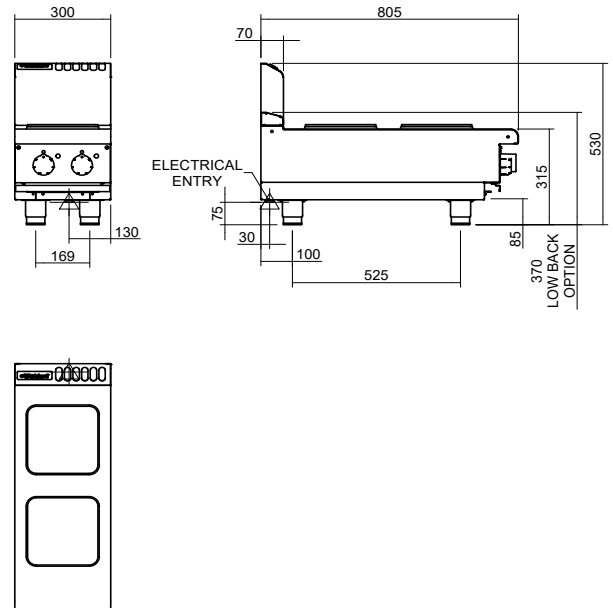
Technical data sheet for  
**ELECTRIC COOKTOPS 300mm**  
**SEALED HOBS**

RN8200SE-B



RN8200SEB

RN8200SE-B Bench Model



**SPECIFICATIONS**

**Cooktop**

2.6 kW Cast Iron Hot Plate elements

**Electrical requirements**

RN8200SE

5.2 kW, 230-240Vac, 50/60hz,  
1P+N+E, 22A

**Electrical connection**

130mm from RH side, 30mm from  
rear,  
and 70mm from bench

**Dimensions**

Width 300mm

Depth 805mm

Height 315mm

Incl. splashback 530mm

Incl. low back 370mm

**Nett weight**

32kg

**Packing data**

0.20m<sup>3</sup>, 55kg

Width 870mm

Depth 350mm

Height 665mm



Australia [moffat.com.au](http://moffat.com.au)

New Zealand [moffat.co.nz](http://moffat.co.nz)

In line with policy to continually develop and improve  
its products, Moffat Limited reserves the right to  
change specifications and design without notice.



ISO9001  
Quality  
Management  
Standard

an Ali Group Company



The Spirit of Excellence