

Technical data sheet for  
**ELECTRIC COOKTOPS 900mm**  
**SEALED HOBS**

RN8600SE-B, RN8600SE-LS, RN8600SE-CB, RN8600SE-RB



RN8600SE-LS

**SPECIFICATIONS**

**Cooktop**

2.6 kW Cast Iron Hot Plate elements

**Electrical requirements**

RN8600SE

15.6 kW, 400-415Vac, 50/60hz,  
 3P+N+E,  
 22A/phase

**Electrical connection**

130mm from RH side, 30mm from rear

70mm from bench height on bench models

675mm from floor on leg stand and cabinet base models

**Refrigerated Base**

**Type**

Ventilated system

**Refrigerant**

R134a (160grams)

**Climate classification**

T – tropical

**Electrical connection**

220-240Vac, 50Hz, 1.8A, 1P+N+E  
 3 pin 10A cordset fitted

**Dimensions**

**Bench models**

Width 900mm

Depth 805mm

Height 315mm

Incl. splashback 530mm

Incl. low back 370mm

All models (excluding Bench model)

Width 900mm

Depth 805mm

Height 915mm

Incl. splashback 1130mm

Incl. low back 970mm

**Nett weight**

Bench and Leg Stand models

90kg

Cabinet Base models

130kg

**Packing data**

Bench and Leg Stand models

0.55m<sup>3</sup>, 135kg

Width 945mm

Depth 870mm

Height 665mm

Cabinet Base and Refrigerated

Base models

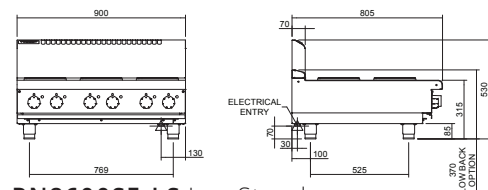
1.03m<sup>3</sup>, 195kg

Width 945mm

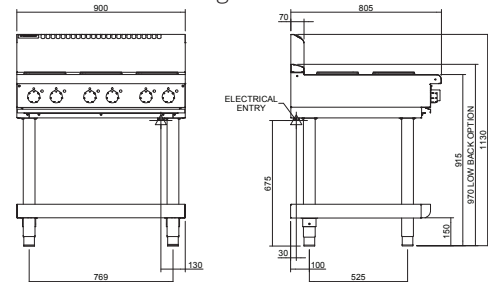
Depth 870mm

Height 1255mm

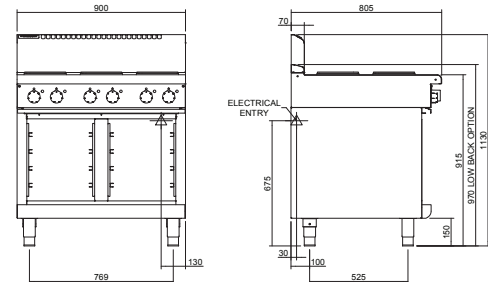
**RN8600SE-B Bench Model**



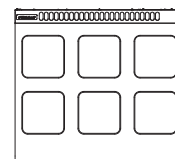
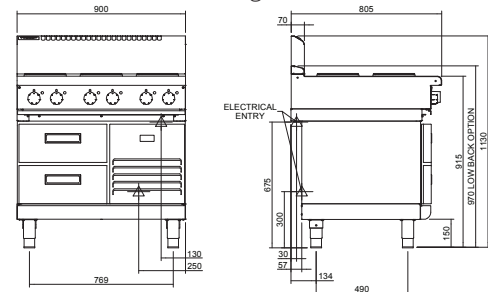
**RN8600SE-LS Leg Stand**



**RN8600SE-CB Cabinet Base**



**RN8600SE-RB Refrigerated Base**



Australia [moffat.com.au](http://moffat.com.au)

New Zealand [moffat.co.nz](http://moffat.co.nz)

In line with policy to continually develop and improve its products, Moffat Limited reserves the right to change specifications and design without notice.



ISO9001  
 Quality  
 Management  
 Standard

an Ali Group Company



The Spirit of Excellence