

Technical data sheet for
ELECTRIC COOKTOPS 900mm
SEALED HOBS

RN8600SE-B, RN8600SE-LS, RN8600SE-CB, RN8600SE-RB



RN8600SE-LS

SPECIFICATIONS

Cooktop

2.6 kW Cast Iron Hot Plate elements

Electrical requirements

RN8600SE

15.6 kW, 400-415Vac, 50/60Hz,
 3P+N+E,
 22A/phase

Electrical connection

130mm from RH side, 30mm from rear

70mm from bench height on bench models

675mm from floor on leg stand and cabinet base models

Refrigerated Base

Type

Ventilated system

Refrigerant

R134a (160grams)

Climate classification

T - tropical

Electrical connection

220-240Vac, 50Hz, 1.8A, 1P+N+E
 3 pin 10A cordset fitted

Dimensions

Bench models

Width 900mm

Depth 805mm

Height 315mm

Incl. splashback 530mm

Incl. low back 370mm

All models (excluding Bench model)

Width 900mm

Depth 805mm

Height 915mm

Incl. splashback 1130mm

Incl. low back 970mm

Nett weight

Bench and Leg Stand models

90kg

Cabinet Base models

130kg

Packing data

Bench and Leg Stand models

0.55m³, 135kg

Width 945mm

Depth 870mm

Height 665mm

Cabinet Base and Refrigerated

Base models

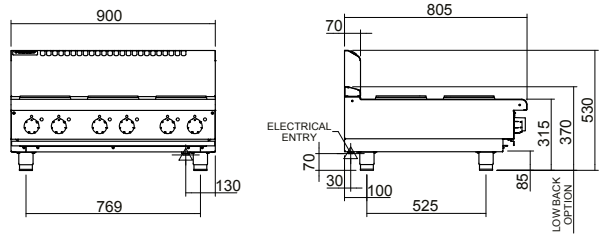
1.03m³, 195kg

Width 945mm

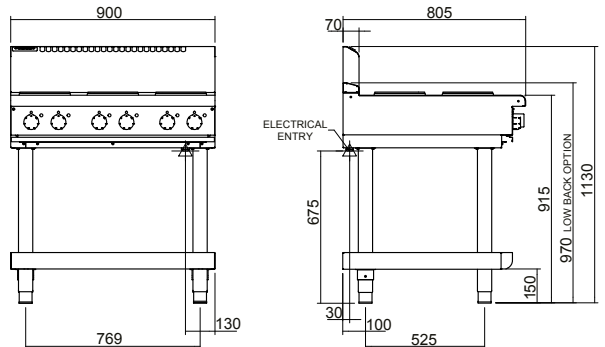
Depth 870mm

Height 1255mm

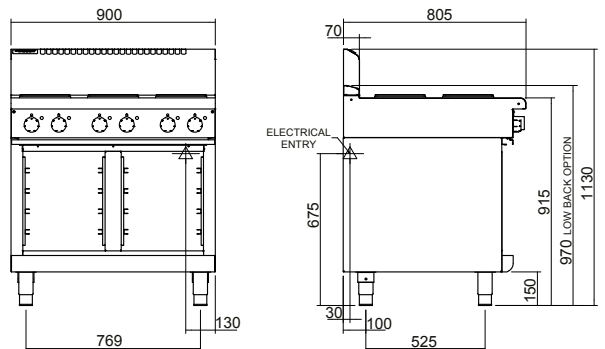
RN8600SE-B Bench Model



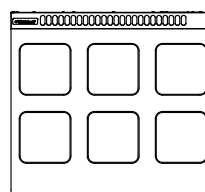
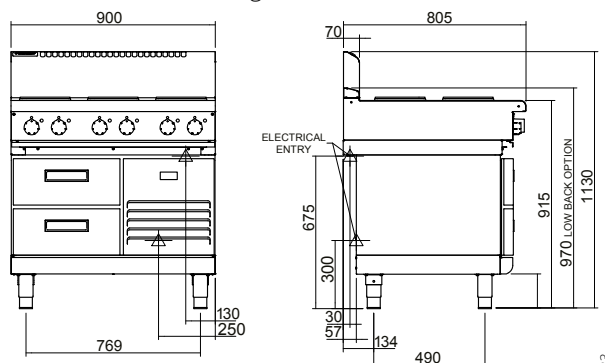
RN8600SE-LS Leg Stand



RN8600SE-CB Cabinet Base



RN8600SE-RB Refrigerated Base



Australia moffat.com.au

New Zealand moffat.co.nz

In line with policy to continually develop and improve its products, Moffat Limited reserves the right to change specifications and design without notice.



ISO9001
 Quality
 Management
 Standard