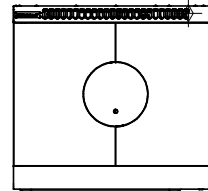
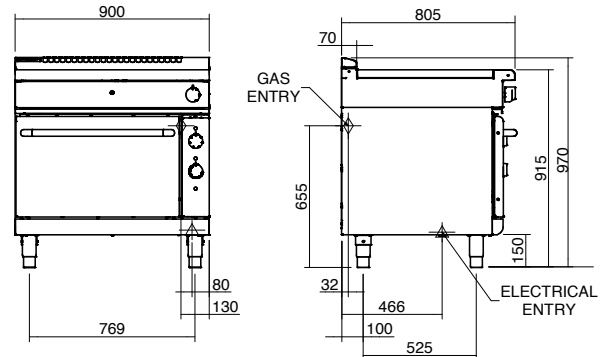


Technical data sheet for

# Target Top Gas / Electric Static Oven Range **900mm** RNLB8110GE



RNLB8110GE



RNLB8110GE

## SPECIFICATIONS

### Burners

45MJ dual ring cast iron - Target Top

### Oven Elements

4.5kW bottom heat element

2.0kW top heat element

### Gas power (gross)

45MJ/hr, 16.2kW

### Electrical requirements

6.5kW

1 phase connection:

230-240Vac, 50/60hz, 1P+N+E, 27A

3 phase connection:

400-415Vac, 50/60hz, 3P+N+E

L1 9.4A

L2 9.4A

L3 8.3A

### Target Top

Cooking surface 900mm x 625mm,  
5625cm<sup>2</sup>

Centre 280mm diameter

Maximum plate temperature at  
centre 500°C

### Oven Dimensions

Width 665mm

Depth 590mm

Height 385mm

Rack size 660mm x 540mm

Rack positions 4

### Series Options

RNLB - Low back models

RNB - 215mm splashback option

### Gas connection

R 3/4 (BSP) male

130mm from RH side, 32mm from

rear, and 655mm from floor

Optional underside connection (refer  
specification drawing)

All units supplied with Natural and  
LP gas regulator

### Electrical connection

23mm from RH side, 484mm from

rear, and 150mm from floor

### Dimensions

Width 900mm

Depth 805mm

Height 915mm

Incl. low back 970mm

Incl. splashback option 1130mm

### Nett weight

275kg

### Packing data

1.03m<sup>3</sup>, 340kg

Width 945mm

Depth 870mm

Height 1255mm

### Gas types

Available in Natural gas and LP gas

Please specify when ordering

Units supplied complete with gas

type conversion kits

Other gas types on request

### OPTIONS AT EXTRA COST

Joining caps

Castors

Plinth mounting



Australia [moffat.com.au](http://moffat.com.au)

New Zealand [moffat.co.nz](http://moffat.co.nz)

In line with policy to continually develop and improve  
its products, Moffat Limited reserves the right to  
change specifications and design without notice.



ISO9001  
Quality  
Management  
Standard

an Ali Group Company



The Spirit of Excellence