

Technical data sheet for Gas Cooktops 900mm

RNLB8400G-B, RNLB8400G-LS, RNLB8400G-CD



RNLB8400G-CD

SPECIFICATIONS

Burners

Open Burners 28MJ/hr dual flame ring with simmer rate
Griddle Burners 20MJ/hr

Gas power (gross)

RNLB8400G 112MJ/hr, 31kW
RNLB8403G 76MJ/hr, 21kW
RNLB8406G 40MJ/hr, 11kW

Griddle Plate

300mm Griddle cooking surface
292mm x 475mm, 1387cm²
600mm Griddle cooking surface
592mm x 475mm, 2812cm²

Gas connection

R 3/4 (BSP) male
130mm from RH side, 32mm from rear, and 655mm from floor
All units supplied with Natural and LP gas regulator

Dimensions

Bench models
Width 600mm
Depth 805mm
Height 315mm
Incl. low back 370mm
Incl. splashback option 530mm
All models (excluding Bench model)
Width 600mm
Depth 805mm
Height 915mm
Incl. low back 970mm
Incl. splashback option 1130mm

Nett weight (all models)

80kg nett

Packing data

Bench and Leg Stand models

0.37m³, 116kg
Width 645mm
Depth 870mm
Height 665mm

Cabinet Base models

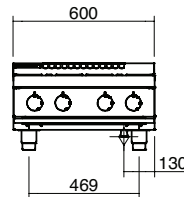
0.70m³, 116kg
Width 645mm
Depth 870mm
Height 1255mm

Gas types

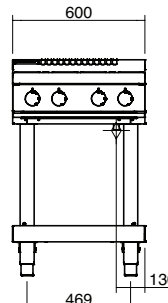
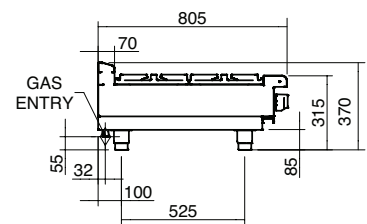
Available in Natural gas and LP gas
Please specify when ordering
Units supplied complete with gas type conversion kits
Other gas types on request

OPTIONS AT EXTRA COST

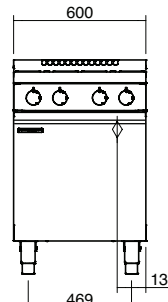
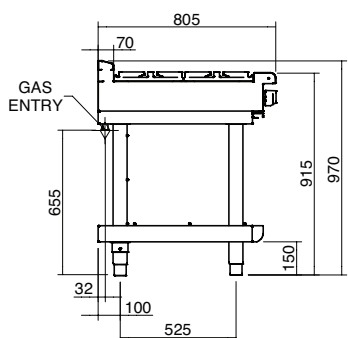
Simmer plates (replaces Potstand)
Ribbed griddle plates
Joining caps
Castors
Plinth mounting



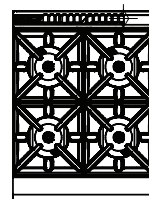
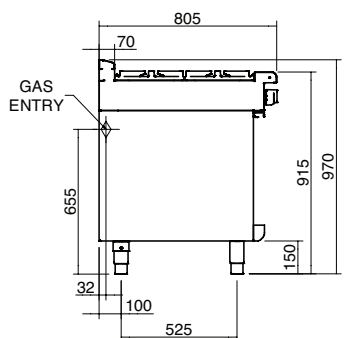
RNLB8400G-B



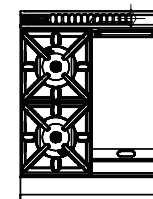
RNLB8400G-LS



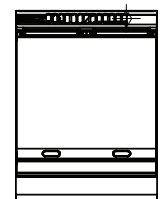
RNLB8400G-CD



RNLB8400G



RNLB8403G



RNLB8406G



Australia moffat.com.au

New Zealand moffat.co.nz

In line with policy to continually develop and improve its products, Moffat Limited reserves the right to change specifications and design without notice.

Series Options

RNLB - Low back models

RNB - 215mm splashback option



ISO9001
Quality
Management
Standard

an Ali Group Company



The Spirit of Excellence