

Technical data sheet for Electric Cooktops 900mm - Sealed Hobs

RNLB8600SE-B, RNLB8600SE-LS, RNLB8600SE-CD, RNLB8600SE-RB



RNLB8600SE-CD

SPECIFICATIONS

Cooktop

2.6kW Cast iron hot plate element

Electrical requirements

RNLB8600SE

15.6 kW, 400-415Vac, 50/60hz,

3P+N+E,

22A

Electrical connection

130mm from RH side, 30mm from rear

70mm from bench height on bench models

675mm from floor on leg stand and cabinet base models

Refrigerated base

Type Ventilated system

Refrigerant R134a (160grams)

Climate classification T – tropical

Electrical connection

220-240Vac, 50Hz, 1.8A, 1P+N+E

3 pin 10A plug cordset fitted

Dimensions

Bench models

Width 900mm

Depth 805mm

Height 315mm

Incl. low back 370mm

Incl. splashback option 530mm

All models (excluding Bench model)

Width 900mm

Depth 805mm

Height 915mm

Incl. low back 970mm

Incl. splashback option 1130mm

Nett weight

Bench and Leg Stand models

90kg

Cabinet Base and Refrigerated Base models

130kg

Packing data

Bench and Leg Stand models

0.55m³, 135kg

Width 945mm

Depth 870mm

Height 665mm

Cabinet Base and Refrigerated Base models

1.03m³, 195kg

Width 945mm

Depth 870mm

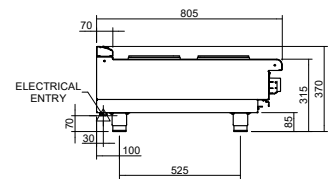
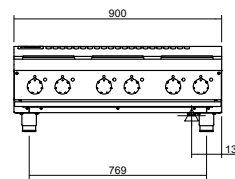
Height 1255mm

Series Options

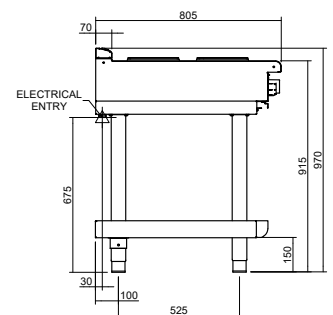
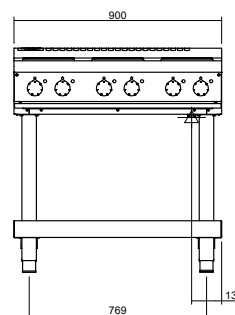
RNLB - Low back models

RNB - 215mm splashback option

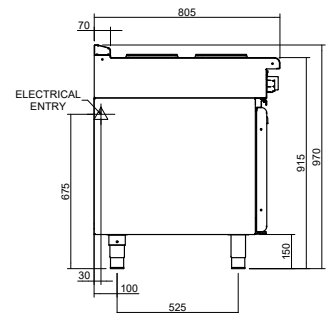
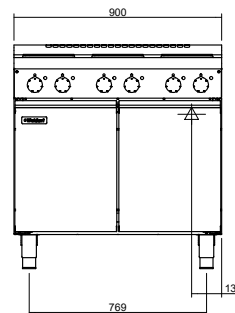
RNLB8600SE-B



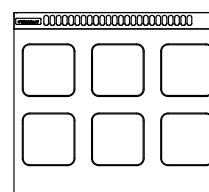
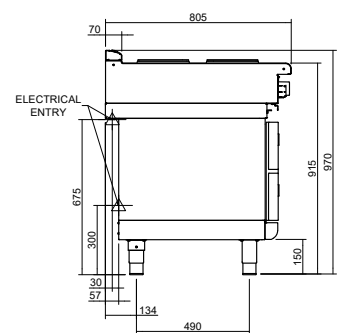
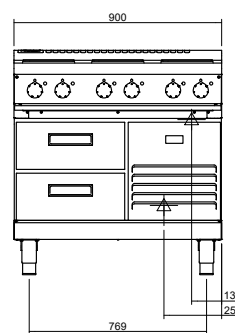
RNLB8600SE-LS



RNLB8600SE-CD



RNLB8600SE-RB



Australia moffat.com.au

New Zealand moffat.co.nz

In line with policy to continually develop and improve its products, Moffat Limited reserves the right to change specifications and design without notice.



ISO9001
Quality
Management
Standard

an Ali Group Company



The Spirit of Excellence