

Technical data sheet for

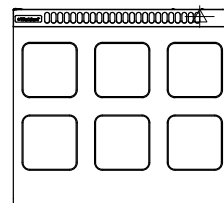
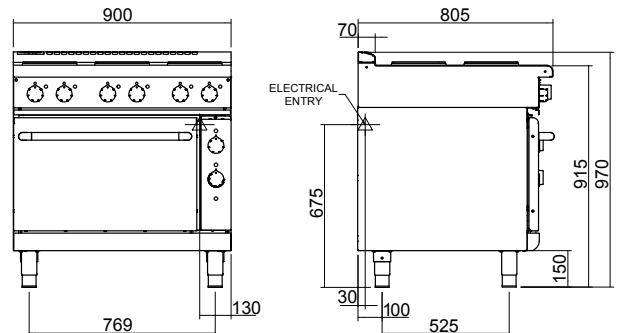
Electric Range Convection Oven 900mm - Sealed Hobs

RNLB8610SEC



RNLB8610SEC

RNLB8610SEC



SPECIFICATIONS

Cooktop

2.6kW Cast iron hot plate element

Oven

4.5kW bottom heat element

2.0kW top heat element

Oven Fan Motor

100W

Electrical requirements

RNLB8610SEC 22.2kW

Electrical connection

22.2 kW max.

400-415Vac, 50/60Hz, 3P+N+E

L1 31.0A max.

L2 31.0A max.

L3 30.0A max.

Oven Dimensions

Width 665mm

Depth 650mm

Height 400mm

Rack size 650mm x 600mm

Rack positions 4

Electrical connection

130mm from RH side, 30mm from rear, and 675mm from floor

Dimensions

Width 900mm

Depth 805mm

Height 915mm

Incl. low back 970mm

Incl. splashback option 1130mm

Nett weight

198kg

Packing data

1.03m³, 263kg

Width 945mm

Depth 870mm

Height 1255mm

OPTIONS AT EXTRA COST

Joining caps

Castors

Plinth mounting

Series Options

RNLB - Low back models

RNB - 215mm splashback option



Australia moffat.com.au

New Zealand moffat.co.nz

In line with policy to continually develop and improve its products, Moffat Limited reserves the right to change specifications and design without notice.



ISO9001
Quality
Management
Standard

an Ali Group Company



The Spirit of Excellence