

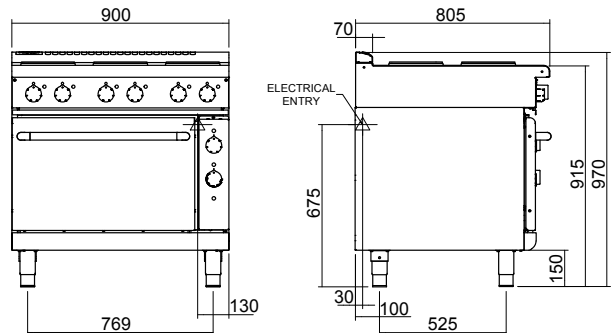
Technical data sheet for

# Electric Range Static Oven 900mm - Sealed Hobs

RNLB8610SE



RNLB8610SE



RNLB8610SE

## SPECIFICATIONS

### Cooktop

2.6kW Cast iron hot plate element

### Oven

4.5kW bottom heat element

2.0kW top heat element

### Electrical requirements

RNLB8610SE 22.2kW

### Electrical connection

22.2 kW max.

400-415Vac, 50/60Hz, 3P+N+E

L1 31.0A max.

L2 31.0A max.

L3 30.0A max.

### Oven Dimensions

Width 665mm

Depth 650mm

Height 400mm

Rack size 650mm x 600mm

Rack positions 4

### Electrical connection

130mm from RH side, 30mm from rear, and 675mm from floor

### Dimensions

Width 900mm

Depth 805mm

Height 915mm

Incl. low back 970mm

Incl. splashback option 1130mm

### Nett weight

195kg

### Packing data

1.03m<sup>3</sup>, 260kg

Width 945mm

Depth 870mm

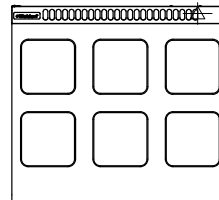
Height 1255mm

### OPTIONS AT EXTRA COST

Joining caps

Castors

Plinth mounting



## Series Options

RNLB - Low back models

RNB - 215mm splashback option



Australia [moffat.com.au](http://moffat.com.au)

New Zealand [moffat.co.nz](http://moffat.co.nz)

In line with policy to continually develop and improve its products, Moffat Limited reserves the right to change specifications and design without notice.



ISO9001  
Quality  
Management  
Standard

an Ali Group Company



The Spirit of Excellence