

Countertop Twin Pan Electric Multi Pan

JUMP 101DS - 58 LITRE



- 2 x 29 litre pan capacity
- 2 x 1/1 GN pan size
- 2 x 20dm² cooking surface
- 170mm depth pan
- Multi pan for cooking, frying, braising, grilling, searing, broiling and sous-vide cooking
- Automatic basket lifting
- Automatic water filling system with accuracy of 1 decilitre
- Electromechanical tray tilting at variable speed
- 12" colour touch screen with intuitive controls
- Automatic and manual meal preparation mode with memory for 800 programs with 12 steps
- Multipoint core temperature probe
- Integrated retractable hand shower

Dimensions

Width	1290 mm
Depth	850 mm
Height	500 mm

Capacity

58 litre

Nett weight

220kg

Packing data

245kg

Width	1345 mm
Depth	960 mm
Height	720 mm

Electrical rating

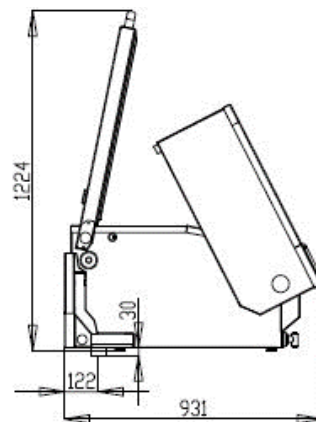
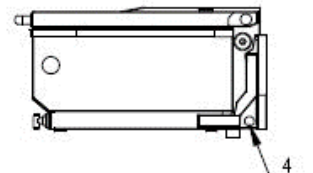
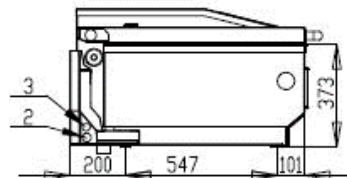
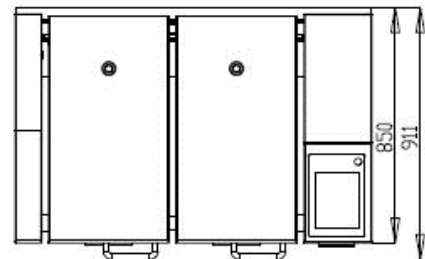
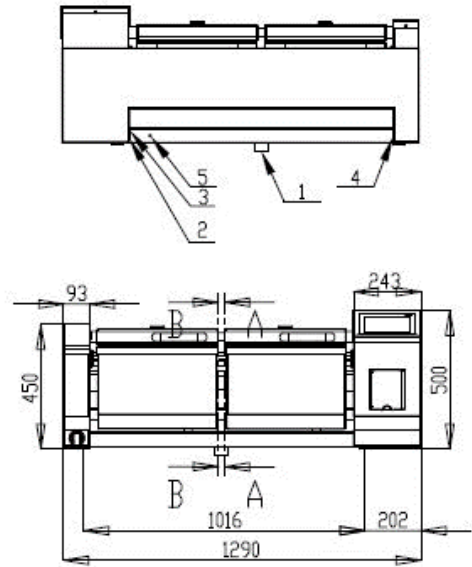
415V, 3P+N+E, 50Hz, 32A
Energy consumption: 23.3kW

Water connection requirements

Inlet connection: R ¾
Water outlet connection: Ø 50

Installation conditions

(for precise installation instructions please refer to our installation manual)



- 1 Drain DN 50
- 2 Water Inlet 3/4"
- 3 Power Connection
- 4 LAN Jack RJ 45
- 5 Equipotential Bonding



Australia moffat.com.au

New Zealand moffat.co.nz

In line with policy to continually develop and improve its products, Moffat Limited reserves the right to change specifications and design without notice.

an Ali Group Company



The Spirit of Excellence