

Single Pan Electric Multi Pan

JUMP 151P - 150 LITRE



- 150 litre single pan capacity
- 3 x 1/1 GN pan size
- 63dm² cooking surface
- 280mm depth pan
- Pressurised version for faster cooking results
- Multi pan for cooking, frying, braising, grilling, searing, broiling and sous-vide cooking
- Automatic basket lifting
- Automatic water filling system with accuracy of 1 decilitre
- Electromechanical tray tilting at variable speed
- 12" colour touch screen with intuitive controls
- Automatic and manual meal preparation mode with memory for 800 programs with 12 steps
- Multipoint core temperature probe
- Integrated retractable hand shower

Dimensions

Width	1651 mm
Depth	950 mm
Height	1050 mm

Capacity

150 litre

Nett weight

590kg

Packing data

615kg	
Width	1765 mm
Depth	1010 mm
Height	1145 mm

Electrical rating

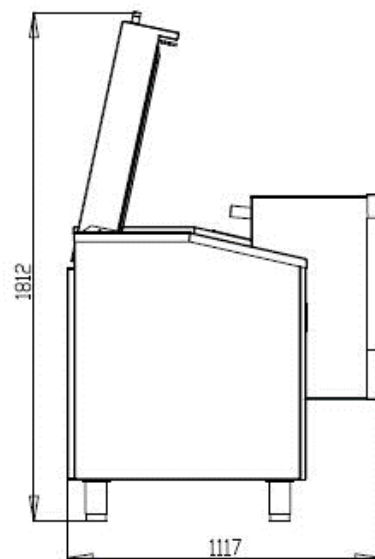
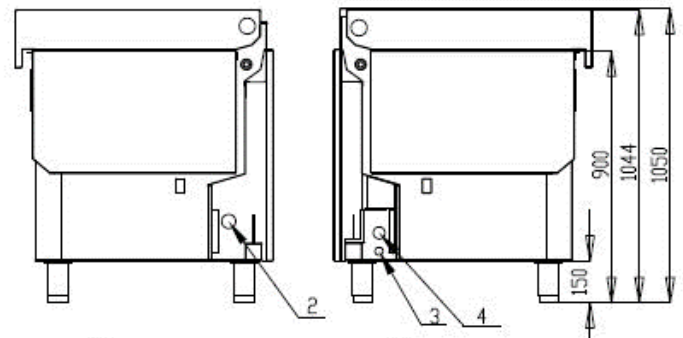
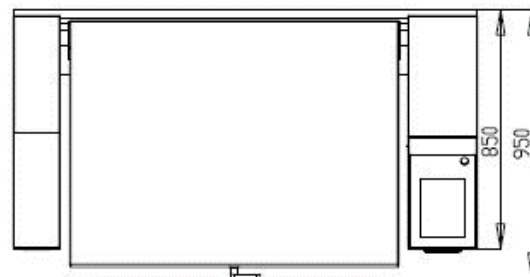
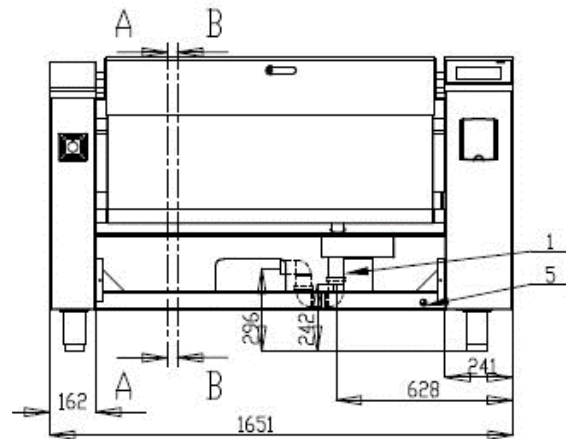
415V, 3P+N+E, 50Hz, 50A
Energy consumption: 38.2kW
Pressure: 0.48 bar

Water connection requirements

Inlet connection: R ¾
Water outlet connection: Ø 50

Installation conditions

(for precise installation instructions please refer to our installation manual)



- 1 Drain DN 50
- 2 Water Inlet 3/4"
- 3 Power Connection
- 4 LAN Jack RJ 45
- 5 Equipotential Bonding



Australia moffat.com.au

New Zealand moffat.co.nz

In line with policy to continually develop and improve its products, Moffat Limited reserves the right to change specifications and design without notice.

an Ali Group Company



The Spirit of Excellence