

# Wexiödisk<sup>W</sup>

## PRE-RINSE MACHINE WD-PRM60 & WD-PRM90

(translation of the original documentation)

---

### Installation and operation manual

---





---

<b>1. General .....</b>	<b>1</b>
1.1 Symbols used in this manual .....	1
1.2 Symbols on the dishwasher .....	2
1.2.1 Machine marking .....	2
1.3 Checking agreement between the appliance and the manual .....	2
1.4 EC Declaration of Conformity .....	3
 <b>2. Safety instructions .....</b>	 <b>4</b>
2.1 General .....	4
2.2 Transport .....	4
2.3 Installation .....	4
2.4 Operation .....	5
2.4.1 Risk of crushing .....	5
2.5 Cleaning .....	5
2.5.1 Cleaning with high-pressure washing .....	5
2.5.2 Cleaning the floor .....	5
2.6 Repairing and servicing the machine .....	5
2.6.1 Instructions if the machine is not working .....	5
2.7 Recycling the machine .....	6

---

---

<b>3. Installation .....</b>	<b>7</b>
3.1 General .....	7
3.2 Requirements for installation on site .....	7
3.2.1 Lighting .....	7
3.2.2 Ventilation .....	7
3.2.3 Drain .....	7
3.2.4 Service space .....	7
3.3 Transport and storage .....	8
3.3.1 Unpacking .....	8
3.3.2 Recycling the packaging .....	8
3.4 Installation .....	9
3.4.1 Preparing for the installation .....	9
3.4.2 Installation .....	9
3.4.3 Connections WD-PRM60 .....	10
3.4.4 Connections WD-PRM90 .....	11
3.4.5 Retro-fitting of WD-PRM60/90 .....	12
3.4.6 Electrical connection .....	13
3.4.7 Water connection .....	13
3.4.8 Drain connection .....	13
3.4.9 Installation of auxiliary equipment .....	14
3.4.10 Installation of motor-powered conveyors .....	18
3.5 Trial run .....	19
3.5.1 Start-up schedule .....	19
3.6 Technical documentation .....	20
<b>4. Directions for use .....</b>	<b>21</b>
4.1 Preparations .....	21
4.1.1 The machine's design, WD-PRM60 .....	21
4.1.2 The machine's design, WD-PRM90 .....	22
4.1.3 Preparations before filling .....	23
4.1.4 Filling the machine .....	23
4.2 Use .....	24
4.2.1 General .....	24
4.2.2 Positioning of items in baskets .....	24
4.2.3 Stopping the machine during operation .....	25
4.3 After use – Cleaning .....	26
4.3.1 Emptying .....	26
4.3.2 Cleaning .....	26
<b>5. Technical specifications .....</b>	<b>28</b>

---

# 1. General

Read the instructions in this manual carefully as they contain important information regarding correct, effective and safe installation, use and service of the dishwasher.



The WD-PRM60/90 can only replace manual rinsing of items. In the future, the items must still be washed and rinsed out in a dishwasher.

The capacity requirements of the machine can be found in the TECHNICAL SPECIFICATIONS chapter.



Before the dishwasher is started up and used, the following points should be observed:

- The SAFETY INSTRUCTIONS chapter must be studied carefully before commissioning the machine.
- Installation of the machine must be performed in accordance with the requirements and instructions indicated in the INSTALLATION and TECHNICAL SPECIFICATIONS chapters.
- Any personnel who may at some point use the machine must be trained in its operation, use and care.
- The machine should not be used by anyone suffering from a physical or mental illness.
- A close eye should be kept on any children in the vicinity of the machine to ensure they do not tamper with it.
- All cover plates must be installed during use.

Keep this manual in a safe place for eventual use by other operators of the dishwasher.

## 1.1 Symbols used in this manual



This symbol warns of situations where a safety risk may arise. The instructions given should be followed in order to prevent injury.



This symbol on a machine part warns of electrical equipment. The machine is sensitive to electrostatic discharge (ESD), which is why a static electricity bracelet must be used when handling the electronics.



This symbol explains the right way to perform a task in order to prevent poor results, damage to the dishwasher or hazardous situations.



This symbol gives recommendations and hints that help to get the best performance from the machine.



This symbol explains the importance of careful and regular cleaning of the machine to meet hygiene requirements.

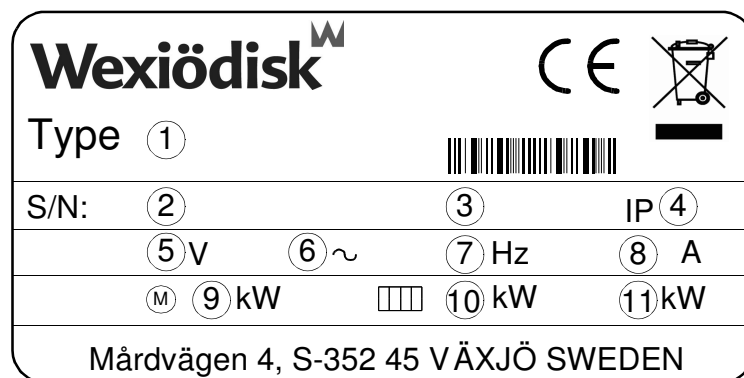
## 1.2 Symbols on the dishwasher



This symbol on a machine part warns of electrical equipment. The part may only be removed by a qualified electrician or trained personnel. The machine is sensitive to electrostatic discharge (ESD), which is why a static electricity bracelet must be used when handling the electronics.

### 1.2.1 Machine marking

The machine has two rating plates, one of which is placed on the right side of the machine and the other in the electrical cabinet. The technical information on the plates is also included on the machine's wiring diagram. The various rating fields show:



1. Machine type
2. Machine number
3. Year of manufacture
4. Enclosure class
5. Voltage
6. Number of phases with or without zero
7. Frequency
8. Main fuse
9. Motor output
10. Electrical heating output
11. Max. output

## 1.3 Checking agreement between the appliance and the manual

Check the type description on the rating plate agrees with the type description on the front of the manual. If manuals are missing, it is possible to order new ones from the manufacturer or the local representative. When ordering new manuals, it is important to quote the machine number found on the rating plates.

A so-called EC Declaration of Conformity is provided on delivery of the product.

CE 14

1. Contact details of the manufacturer (Wexiödisk AB).
2. Representatives of Wexiödisk AB.
3. Person responsible for the product's documentation.
4. Year of manufacture of the product.
5. Model designation of the dishwashers and accessories the document applies to, sorted by type.
6. The EU directives for which the dishwashers and accessories meet all applicable provisions.
7. Harmonised standards for the directives specified, and which the dishwashers and accessories meet, wherever relevant.
8. Other standards which the dishwashers and accessories meet wherever relevant.
9. Place and date with signature and name (in block letters) of the person responsible for ensuring compliance with legislation and regulations.

## 2. Safety instructions

### 2.1 General

The machine is CE marked, which means that the machine complies with the requirements of the EU machinery directive with regards to product safety. Product safety means the machine has a design which prevents personal injury or damage to property.



Modification to the equipment without the approval of the manufacturer invalidates the manufacturer's product liability.

To further improve safety during installation, operation and service, the operator and personnel responsible for installation and servicing of the machine should read through the safety instructions carefully.



Switch off the appliance immediately in the event of failure or malfunction. Only trained technicians may service the machine. Regular checks, as mentioned in the manual, should be carried out as per the instructions. The machine should be serviced by a person authorised to do so by the manufacturer. Use original spare parts. Contact an authorised service company to draw up a programme for preventative care. Dangerous situations may arise if the above is not followed.

Before using the machine, ensure that personnel are given the requisite training in handling and care of the machine.

### 2.2 Transport



Handle the machine with care during unloading and transport to avoid tipping. Never lift or move the machine without the wooden packaging supporting the stand.

### 2.3 Installation



The electrical cabinet may only be opened by a qualified electrician. Make sure the machine is non-live (turn off the power at the mains switch) before any work is performed on the machine. The machine's electronics are sensitive to electrostatic discharge (ESD), which is why a static electricity wristband must be used when handling the electronics.

Make sure that the mains voltage is the same as that indicated on the machine's rating plate. The machine should be connected to a lockable main switch.



## Safety instructions

---

## 2.4 Operation

### 2.4.1 Risk of crushing



Take care when the door is closed to avoid crushing injuries.

## 2.5 Cleaning



The temperature of the water in the tank is approx. 40 °C and contains detergent. Be careful when emptying and cleaning the machine. Use protective gloves and safety glasses.

### 2.5.1 Cleaning with high-pressure washing



The machine must not be cleaned with a pressure washer, either inside or out.

In order to satisfy current requirements, electrical components of approved enclosure classes are used. There is no enclosure class capable of withstanding high pressure.

### 2.5.2 Cleaning the floor



When cleaning floors using high-pressure equipment, water can splash up under the machine and damage the components. These have not been designed to withstand rinsing with water. Never use high pressure washes on the floor less than 1 meter from the dishwasher. Problems with splashing can also occur when using ordinary water hoses.

## 2.6 Repairing and servicing the machine



Where repairs or servicing involve electrical equipment, the power must be switched off before work commences. If required, the switch must be locked to prevent unintentional operation.

### 2.6.1 Instructions if the machine is not working



Check the following:

- Has the appliance been used according to the instructions?
- Are all removable parts present?
- Is the main switch in the ON position?
- Are the fuses in the electrical cabinet complete? Ask service personnel to check the fuses.

If none of the above solves the problem, authorised service personnel must be called to check the machine. For authorised service companies, please see [www.wexiodisk.com](http://www.wexiodisk.com) or contact Wexiödisk AB.

## 2.7 Recycling the machine



Recycling of the appliance when its economical lifetime has been reached must be carried out in accordance with current rules and regulations. Contact professional personnel specialising in recycling.

## 3. Installation

### 3.1 General



The machine must only be installed by authorised personnel.

Read these instructions through carefully as they contain important information regarding correct installation.

The instructions should be used together with the machine's wiring diagram.

The machine is CE marked. The CE mark is only valid for the machines with the original design. If the machine is damaged as a result of the instructions not being followed, the supplier guarantee and product liability is invalidated.

### 3.2 Requirements for installation on site

#### 3.2.1 Lighting

In order to ensure the best possible working conditions during installation, operation, service and maintenance, make sure that the machine is installed in a well-lit room.

#### 3.2.2 Ventilation

The machine generates heat and steam when in operation. For a good working environment, a certain air change rate is required in the washing room. The ventilation requirements for the room are calculated as per applicable standards.

#### 3.2.3 Drain

There must be a waste pipe with an effective trap for the machine's waste water and for water used for cleaning. The floor drain capacity can be found in the TECHNICAL SPECIFICATIONS chapter.

#### 3.2.4 Service space

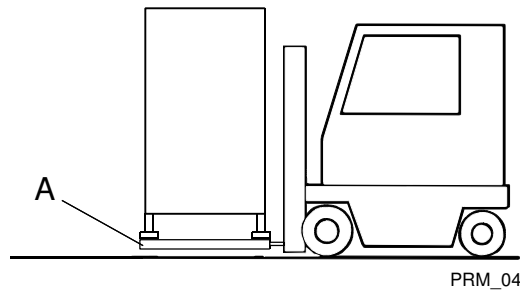
A 1-metre free space should be allowed in front of the machine for service purposes.

### 3.3 Transport and storage

Always transport the machine in an upright position.



Take care during transport, as there is a risk of tipping. NB! The machine must not be transported without a pallet or other support. The machine may be damaged otherwise. When transporting the machine without the ordinary wooden pallet, always check that none of the machine components can be damaged.



*A=Wooden pallet*

If the machine is not being installed straight away, it must be stored frost-free in premises with dry air.

#### 3.3.1 Unpacking

Remove the packing material. Inspect the machine for any transport damage.

Check that all units have been delivered by comparing with the delivery note.

#### 3.3.2 Recycling the packaging

Packaging must be sent for destruction or recycling in accordance with local regulations.

The machine is manufactured from stainless steel plate, among other things, and also contains electronic components. When it is time to scrap the machine, it must be handed over for recycling in accordance with local regulations.

## Installation

---

### 3.4 Installation

#### 3.4.1 Preparing for the installation

Check that there is sufficient room for the machine at the installation location.

Check that there are connections for water, electricity and a waste pipe at the installation location.

#### 3.4.2 Installation



Check the following points before the machine is placed in position:

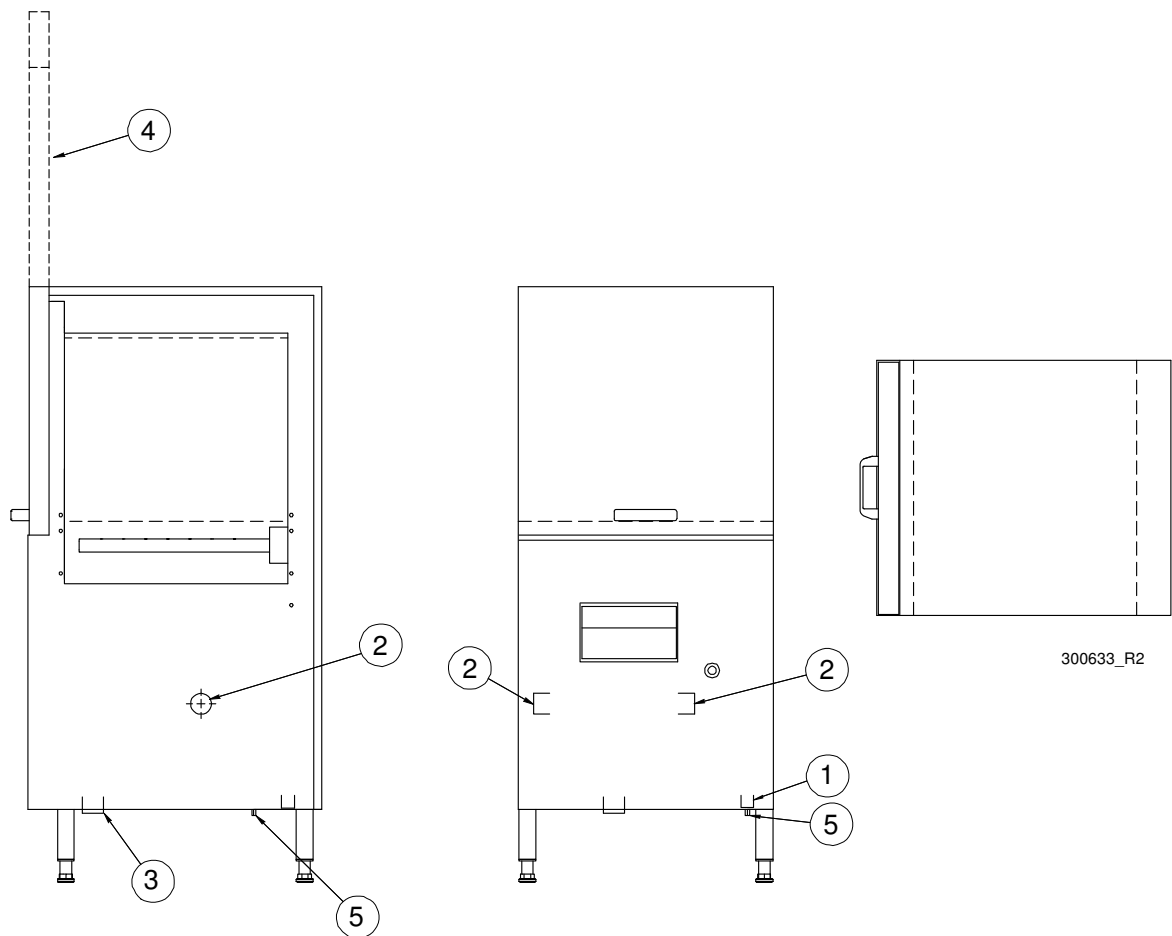
- Check that the fuse for the machine at the site is off.
- Remove the protective plastic on the sides which are to be stood against a wall.
- If holes need to be drilled in the machine, the holes must be fitted with an edge strip or similar protection.
- Put the machine in position and check that it is horizontal using a spirit level. Use the legs to adjust machine height. Once the machine has been filled with water, do another check to make sure the machine is standing level.

The machine must be evenly balanced and checked on three sides:

- On the cover edge of the front (tank body).
- On the end of the infeed hood.
- On the cover of the outfeed.

## Installation

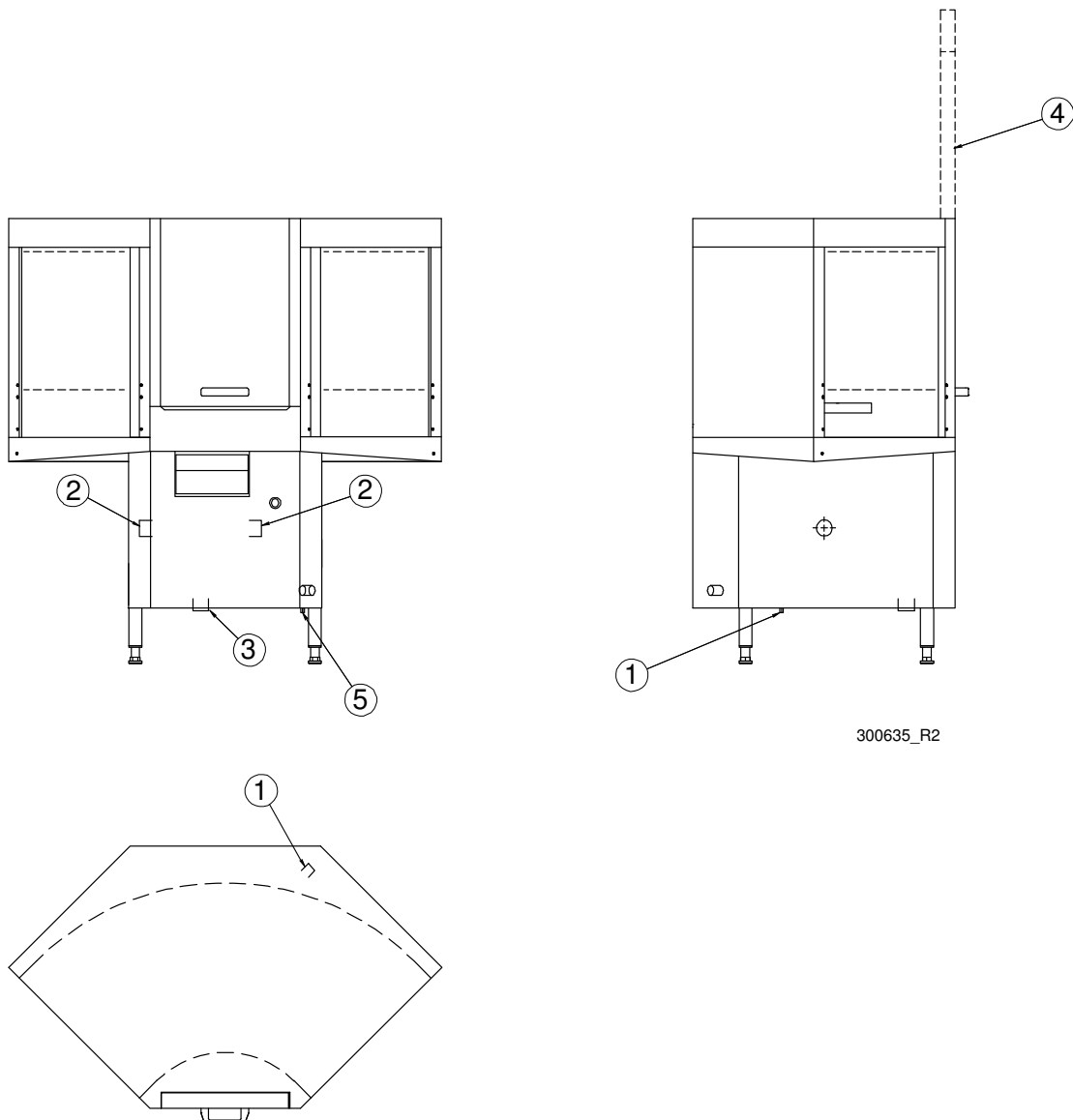
### 3.4.3 Connections WD-PRM60



1. Electrical connection
2. Water connection from dishwasher
3. Drain
4. Door (open position)
5. Separate water connection (option)

## Installation

### 3.4.4 Connections WD-PRM90



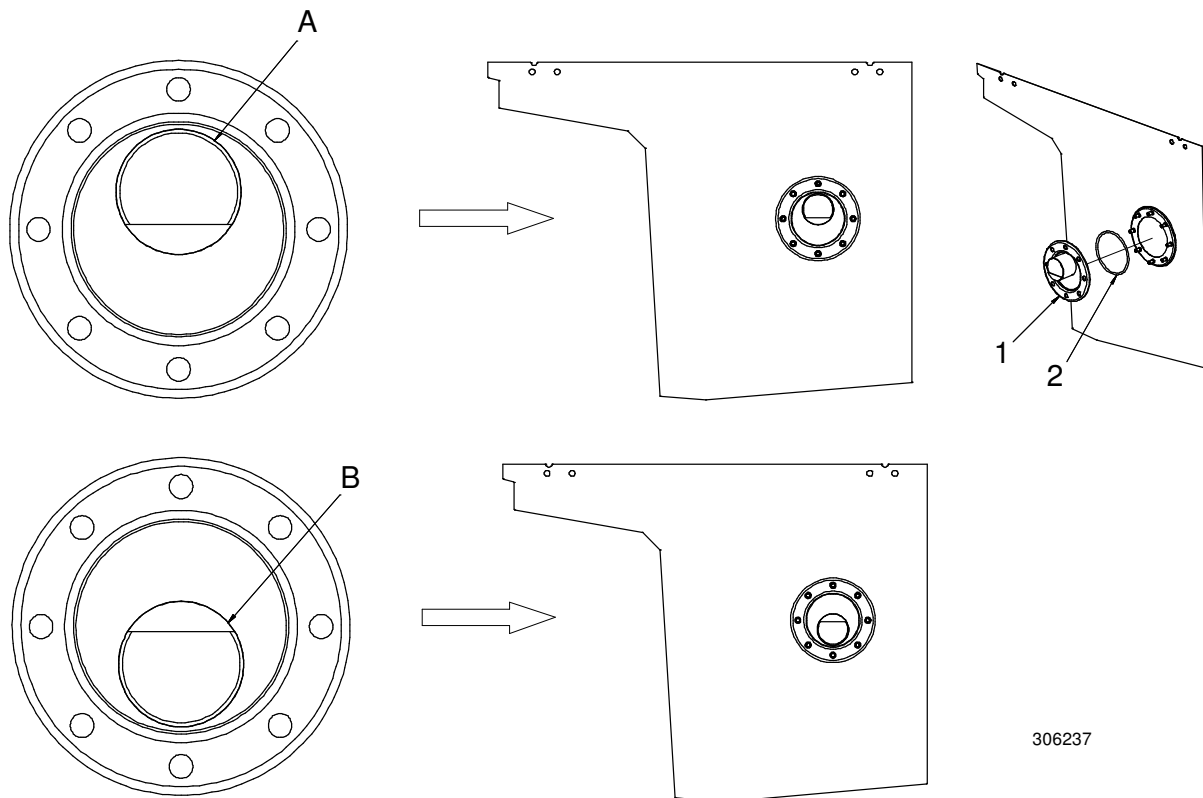
300635\_R2

1. Electrical connection
2. Water connection from dishwasher
3. Drain
4. Door (open position)
5. Separate water connection (option)

## Installation

### 3.4.5 Retro-fitting of WD-PRM60/90

When retro-fitting WD-PRM60/90 to an existing rack conveyor machine, connection should be made as follows:



306237

*A=The connection must be at the top for WD-151E and WD-153*

*B=The connection must be at the bottom for WD-211E - WD-421E and WD-213 - WD-423*

1. Tank washer
2. O-ring



## Installation

---

### 3.4.6 Electrical connection



This symbol on a machine part warns of electrical equipment. The part may only be removed by a qualified electrician. The machine is sensitive to electrostatic discharge (ESD), which is why a static electricity bracelet must be used when handling the electronics.



The machine should be connected to a lockable main switch. This should be placed on the wall, well protected against water and steam emissions.



Information for and on electrical connection is shown on the machine's wiring diagram. This is placed in the plastic pocket on the inside of the electrical cabinet door.

The machine is supplied with the electrical cable connected (1).

Power can also be supplied to the machine via a connected dishwasher (option).

### 3.4.7 Water connection



The dishwasher fills with water (2) via the rack conveyor machine that the WD-PRM60/90 is connected to.

The machine can be fitted with a separate water connection (5) as an option. A shut-off valve must then be installed.

### 3.4.8 Drain connection

There must be a waste pipe (3) with an effective trap for the machine's waste water and for water used for cleaning. The floor drain capacity can be found in the TECHNICAL SPECIFICATIONS.



Ensure that the drain connection is kept in place by using e.g. cable ties in the designated areas.

## Installation

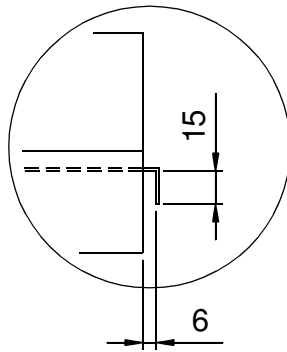
---

### 3.4.9 Installation of auxiliary equipment

Once the machine is in place and adjusted horizontally and vertically, any peripherals can be mounted.

NOTE: When connecting sinks and conveyors, no holes must be drilled in the machine. If a hole does need to be drilled in the machine, the hole must be fitted with an edge strip or similar protection.

The sinks are hooked firmly on to the top edge of the tank.



300730\_R1a

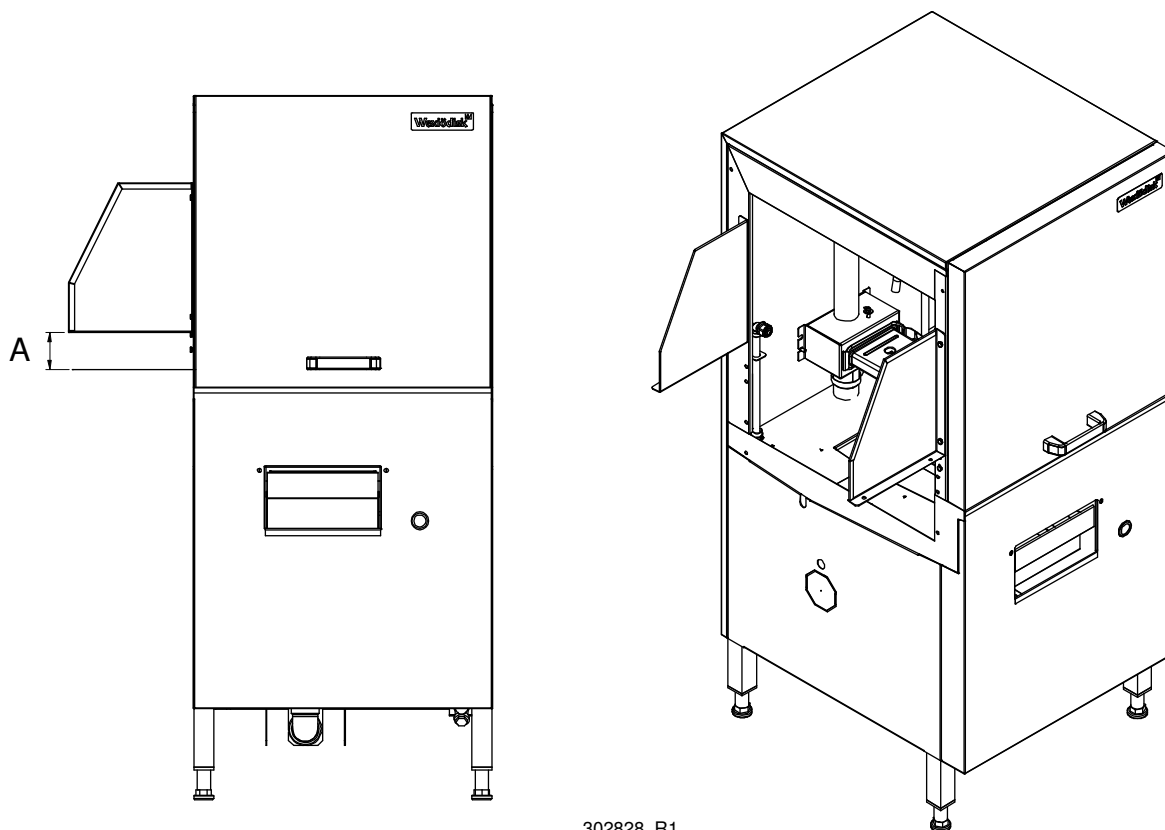
#### *Detail of sink cover*

The connection profile must look like the one shown in the drawing. The distance of 6 mm may be reduced, but must not be less than 3 mm.

Use a spirit level to check that the sinks are horizontal and adjust the height, if necessary.

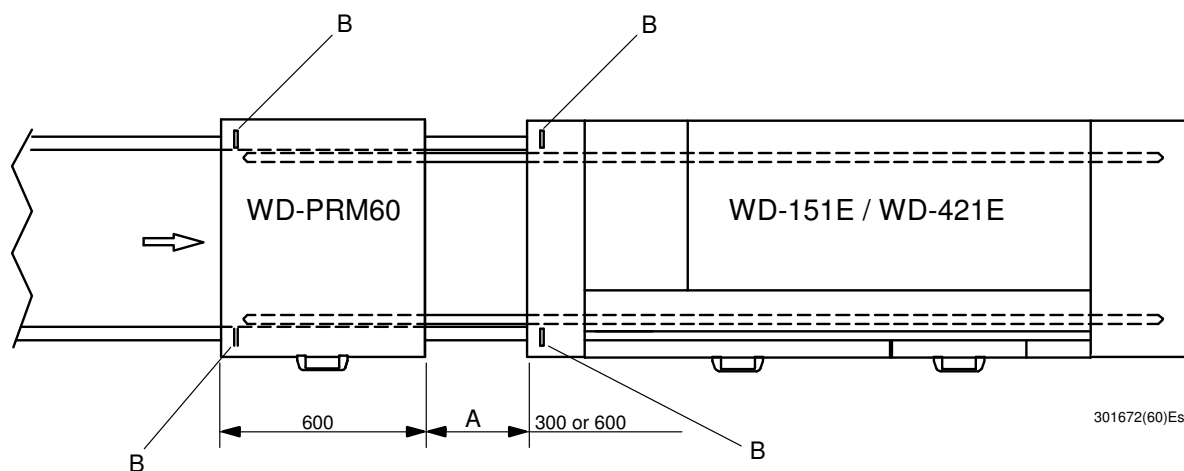
## WD-PRM60

Splashbacks come with the machine. These are mounted as and when necessary on the feed side and thereby prevent water splashing onto the sides.



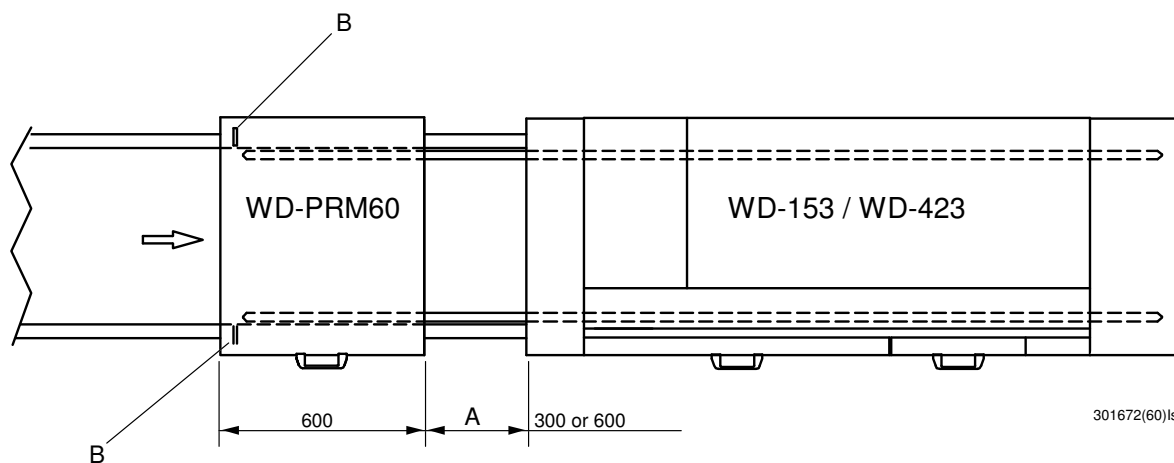
302828\_R1

*A=The height is adjusted so that it fits the connecting table.*

**Designed for bar feeder (WD-151E - WD-421E)**

*A=Bar feeder. Order separately and then it will be included in the delivery*  
*B=Photocell*

Time relay KT1 shall be set in E-mode.

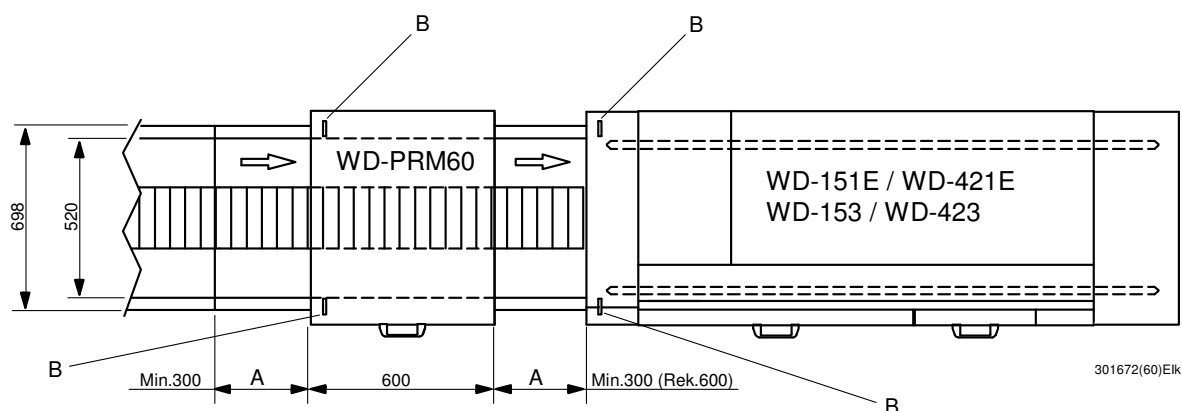
**Designed for bar feeder (WD-153 - WD-423)**

*A=Bar feeder. Order separately and then it will be included in the delivery.*  
*B=Photocell*

Photocell (B) moves from the machine to the infeed section of WD-PRM60.

Time relay KT1 shall be set in D-mode.

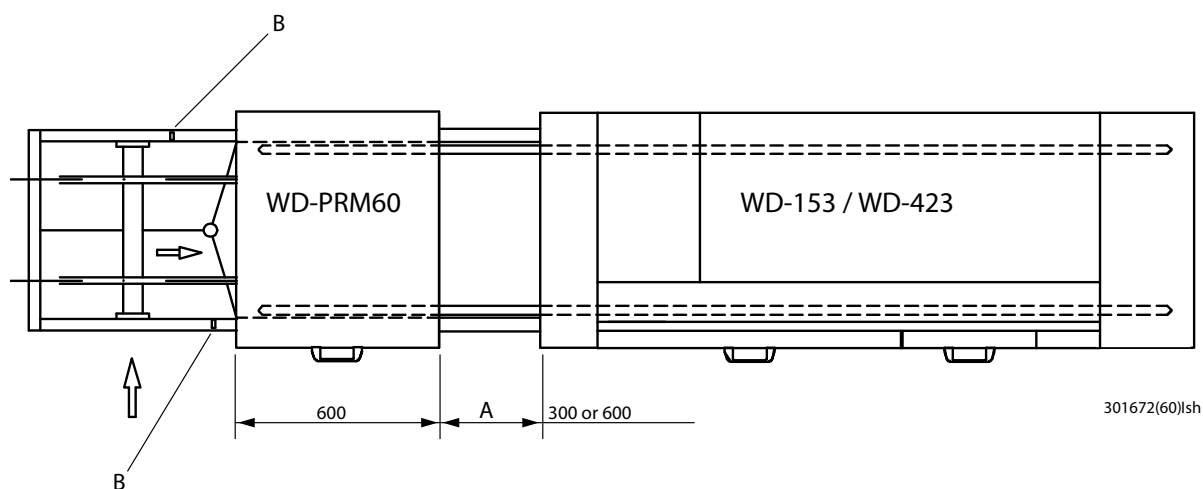
The reference value for "Corner infeed distance" adjusts to the table of reference values.

**Designed for chain conveyor (WD-151E - WD-421E, WD-153 - WD-423)**

*A=Chain conveyor. Not included in the delivery, order separately.*

*B=Photocell*

Time relay KT1 shall be set in E-mode.

**Adapted for bar-fed corner feed unit (WD-153 - WD-423)**

*A=Bar feeder. Order separately and then it will be included in the delivery.*

*B=Photocell*

Photocell (B) moves from the machine to the infeed section of WD-PRM60.

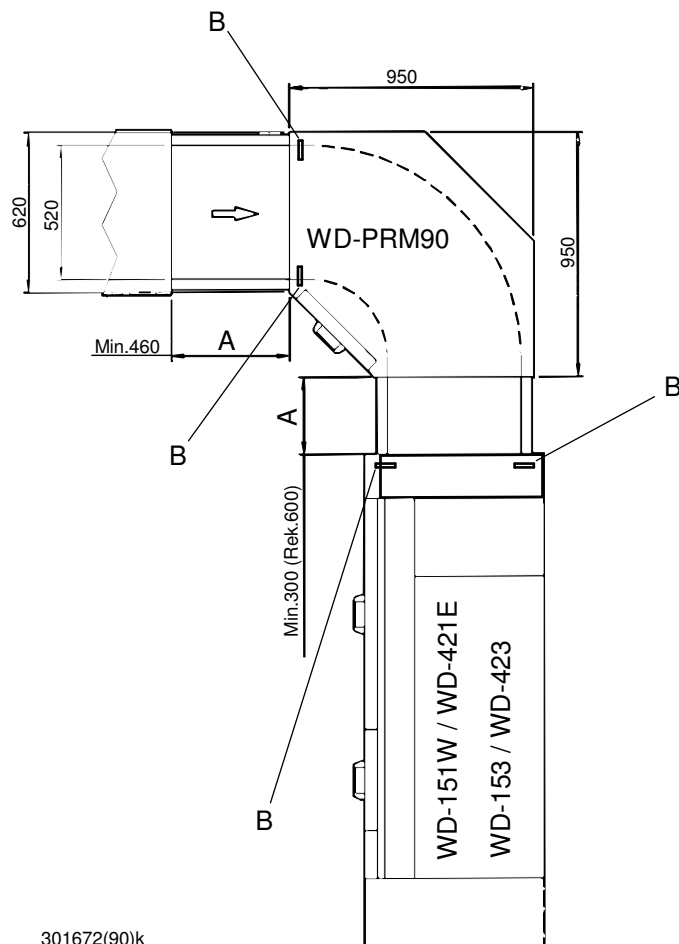
Time relay KT1 shall be set in D-mode.

DIP switch 3 on the machine's electronic card must be set to the ON position.

The reference value for "Corner infeed distance" adjusts to the table of reference values.

**WD-PRM90**

Designed for chain conveyor (WD-151E - WD-421E, WD-153 - WD-423)



301672(90)k

*A=Chain conveyor. Not included in the delivery, order separately.*

*B=Photocell*

Time relay KT1 shall be set in E-mode.

### 3.4.10 Installation of motor-powered conveyors



If motor-powered conveyors are connected to the dishwasher, the supplier's assembly instructions for these must be followed.

## 3.5 Trial run

Prepare the machine for a trial run using the INSTRUCTIONS FOR USE. This describes the measures that must be taken to make the machine ready for operation.

### 3.5.1 Start-up schedule

This should be completed and acknowledged by the customer on start-up.

**Machine type:**

**Machine number:**

**Installation date:**

Customer:
Address for visitors:
Postcode + Town/City:
Telephone:
Contact person:

Dealer:
Telephone:
Contact person:

Installation company:
Telephone:
Contact person:

Service company:
Telephone:

Detergent supplier:
Telephone:

End user's signature:

Name in block capitals:

Read the contents of the installation and user manuals carefully. Then check off as follows:

**1. Check:**

- Water and drain connections
- That the machine is evenly balanced
- Filter and level pipe are in place
- That time relay KT1 is in the correct "mode" and that the rinsing time is set correctly.  
**NOTE!** see the manual
- That the relevant reference values in the rack conveyor machine have been adjusted as necessary.

**2. Filling the machine:**

- Turn on the main switch (on the rack conveyor machine)
- Close the door
- Press the ON/OFF button
- Fill the machine with water as per the INSTRUCTIONS FOR USE

**3. Start the machine:**

- Check the pump's direction of rotation  
**NOTE!** If the direction of rotation is wrong, the phase must be inverted on the lockable main switch.

**4. Run a number of baskets complete with loads and check that:**

- There are no water leaks
- The door breaker works

**5. Final check: Empty the machine and turn off the power using the main switch.**

- Re-tighten all connections on contactors and any circuit breakers
- Set all circuit breakers to ON position
- Display the maintenance instructions supplied with the machine.

**6. Train dishwashing staff**

## 3.6 Technical documentation



For correct use and servicing, it is essential that the documentation accompanying the machine is made available to personnel who will be using the machine. The installation and user manual, which describes handling and care among other things, should be stored near the machine.

If the service manual accompanies the delivery, this should be passed on to the responsible service technician later on.

If the spare parts manual accompanies the delivery, this should be passed on to the responsible service technician later on.



## Directions for use

---

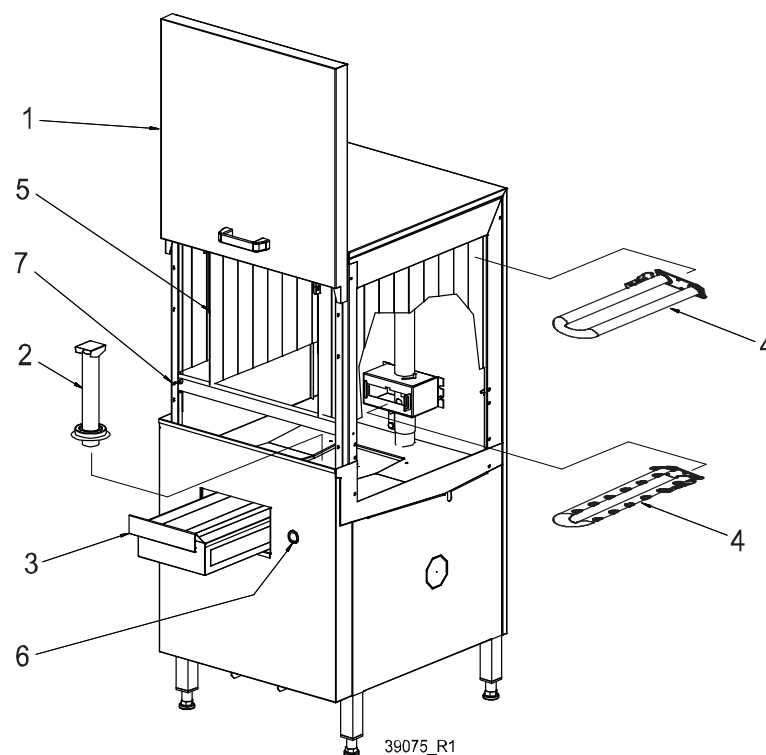
## 4. Directions for use



The machine is intended to be used for the rinsing of items used for the preparation and serving of food, as well as various types of items for the storage of food. The items must be washed and rinsed in a dishwasher.

### 4.1 Preparations

#### 4.1.1 The machine's design, WD-PRM60



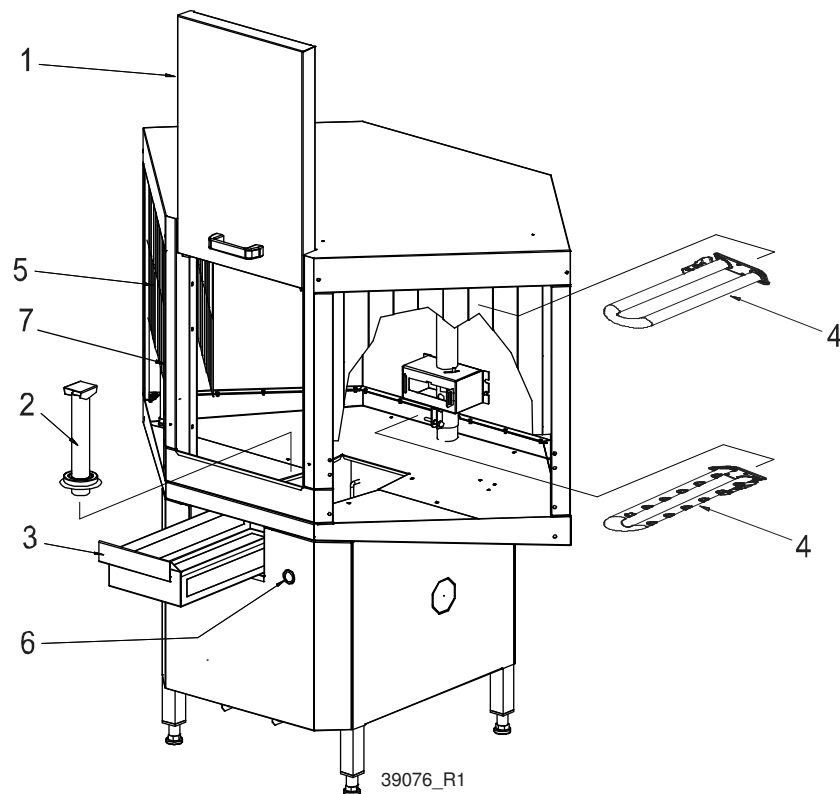
*WD-PRM60*

1. Door (removable)
2. Level pipe
3. Filter
4. Washer arms, 2x (removable)
5. Curtain, 4 x
6. ON/OFF button with pilot light, ready to wash
7. Photocell loading

## Directions for use

---

### 4.1.2 The machine's design, WD-PRM90



#### *WD-PRM90*

1. Door (removable)
2. Level pipe
3. Filter
4. Washer arms, 2x (removable)
5. Curtain, 4 x
6. ON/OFF button with pilot light, ready to wash
7. Photocell loading

## Directions for use

---

### 4.1.3 Preparations before filling

Numbers in brackets refer to pictures in the chapter "The machine's design".



Check:

- that the main switch is in the ON position.
- that the machine and the removable parts have been cleaned. If not – clean them!



Washing-up liquid must not be used in the machine or for pre-treating items (soaking, pre-washing, etc.). It causes foam to form and produces poor wash results.

Assemble:

- level pipe (2), strainer (3), wash arms (4) and curtains (5)
- close the door (1)

### 4.1.4 Filling the machine

NB! The rack conveyor machine must be started.

Numbers in brackets refer to pictures in the chapter "The machine's design".

- Press the ON/OFF button (6). The tank now fills with water from the connected rack conveyor machine. Once the machine is ready, the button (6) illuminates green.

#### **Filling the machine with a separate water connection (option)**

Numbers in brackets refer to pictures in the chapter "The machine's design".

- Press the ON/OFF button (6). The tank now fills with water. Once the machine is ready, the button (6) illuminates green.

## Directions for use

---

### 4.2 Use

#### 4.2.1 General

During operation the dishwasher's tank fills automatically.

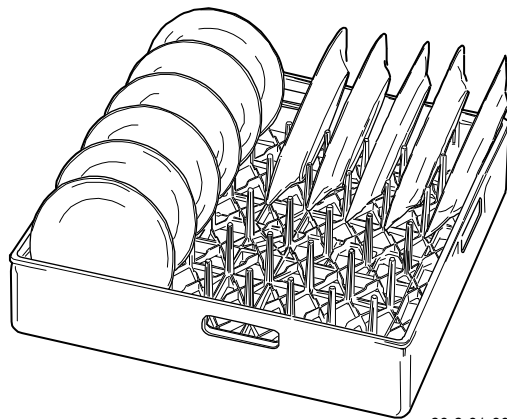


For optimum results it is essential to keep the filter (3) clean. Remove it and rinse it out regularly. When the machine is being used intensively, empty it at least twice an hour.

#### 4.2.2 Positioning of items in baskets

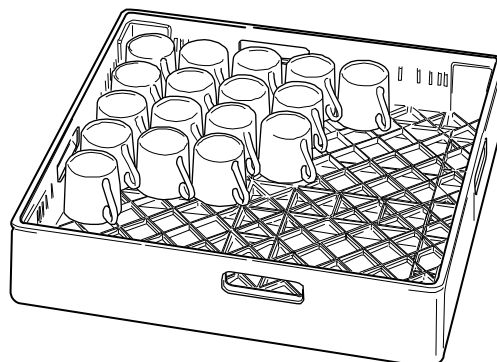


The machine comes supplied with three baskets which are used as follows:



90-9-01-001

*The yellow basket is used for plates, side plates, saucers, etc.*

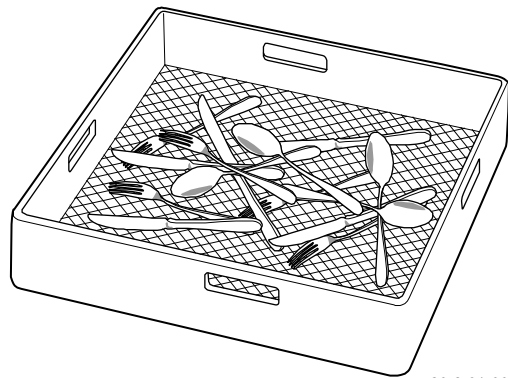


90-9-01-002

*The blue basket is used for glasses and cups*

## Directions for use

---



90-9-01-003

*The brown basket is used for cutlery*

### 4.2.3 Stopping the machine during operation

If the machine needs to be stopped when it is in operation, use the buttons on the control panel. Press the ON/OFF button (6) to turn off the power.

Restart: Press the ON/OFF button (6).

## 4.3 After use – Cleaning

### HACCP

HACCP is a preventive inspection system to ensure hygiene requirements are met during the washing process and cleaning of the machine. As a result of its design, the machine meets strict hygiene requirements. Regular, thorough cleaning is also important from a hygiene perspective. A machine that is properly cleaned helps produce a good wash result, reduces the risk of dirt accumulating, increases the service life of the machine and reduces the risk of emergency shut-down.

### 4.3.1 Emptying

Numbers in brackets refer to pictures in the chapter "The machine's design".

- Press the ON/OFF button (6).
- Empty the tank by removing the level pipe (2).

### 4.3.2 Cleaning

#### Daily internal cleaning

Clean the filter (3) and curtains (5). Check the washer arms' (4) nozzles (12); if necessary, remove and clean. Rinse out all of the machine's inside surfaces, and clean the tank. Use our Cleaning Gun (WD240.9009) for best results

#### Daily external cleaning

Wipe the outside of the machine with a soft, damp cloth.

#### Weekly cleaning (or as required)

Weekly cleaning should be carried out more thoroughly than daily cleaning.

In addition to the measures for daily cleaning, clean the machine as follows:

- Washer arms (4): brush the interior. Also clean the washer arm nozzles.
- Decalcify the machine when necessary.



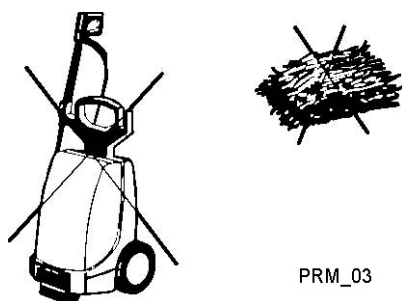
*Cleaning brush WD721.0301*

## Incorrect cleaning methods



An incorrect cleaning method may damage the machine. The following therefore applies:

- Do NOT use steel wool as it will corrode the machine.
- If detergent is used, it must not contain abrasives. Detergents containing abrasives will damage the stainless steel panels.
- The machine must not be hosed down externally. Water can enter the control panel and damage electrical equipment.
- High-pressure cleaning can damage the machine and must NOT be used for cleaning purposes. The supplier cannot be held responsible for any faults caused by the use of pressure washers on the machine and such action will void the guarantee. Never use a pressure washer on the floor less than 1 metre from the machine. There is a risk of splashing even if the floor is hosed down.



PRM\_03

*Steel wool and pressure washers must not be used for cleaning*

## Operational disturbances

When you contact the service personnel, you will need to answer the following questions about the machine:

- machine type and model
- machine serial number and installation date
- short description of the fault/problem
- what happened/was being done immediately before the fault occurred

## 5. Technical specifications

The manufacturer reserves the right to make changes to this technical data.

TECHNICAL DATA	
Pump motor (kW)	0,75
Tank volume (litres)	30
Weight, machine in operation (WD-PRM60) (kg)	150
Weight, machine in operation (WD-PRM90) (kg)	170
IP enclosure class (IP)	55

CAPACITY AND OPERATING DATA	
Normal wash capacity (baskets/hour) (pcs) *	285
Max. surface temperature at room temperature +20°C (°C)	35
Sound pressure level, L <sub>PA</sub> (dBA) **	69
Sound power level L <sub>WA</sub> (dBA) **	83

\* Maximum capacity depends on the dishwasher model connected.

\*\* according to EN 60 335-2-58, §ZAA.2.8 with measurement equipment complies class 1.

The in situation sound pressure levels were measured in three points 20cm away from any corners of the object under study at 1,55m height.

The sound intensity measurement was operated with a probe consisting of two microphones of opposite polarization. The probe was placed normal to an imaginary measurement surface that lies 1m away from any corners around the object under study.

CONNECTION MACHINE	
Total connection effect (kW)	0,8
Main fuse 400V 3N~ (A) *	10
Max. connection area 400V 3N~ (L1-L3, N, PE) Cu (mm <sup>2</sup> ) **	6

\* Other connection voltages on request.

\*\* Supplied with 7 metre-long cable.



## Technical specifications

---

WATER, DRAIN AND VENTILATION CONNECTIONS	
Water connection from dishwasher (Ø mm)	50
Separate water connection (option) (external thread)	R½"
Drain connection (Ø mm)	50
Floor drain, capacity (litres/sec)	3
Heat load to the room, sensible (kW)	1,7
Heat load to the room, latent (kW)	0,6
Heat load to the room, total (kW)	2,3

SIZE AND WEIGHT FOR TRANSPORT	
Size (LxWxH (m)) (WD-PRM60) *	0,8x0,8x1,5
Size (LxWxH (m)) (WD-PRM90) *	1,4x0,9x1,5
Weight (WD-PRM60) (kg) *	155
Weight (WD-PRM90) (kg) *	175

\* Including packaging.