

Wexiödisk^W

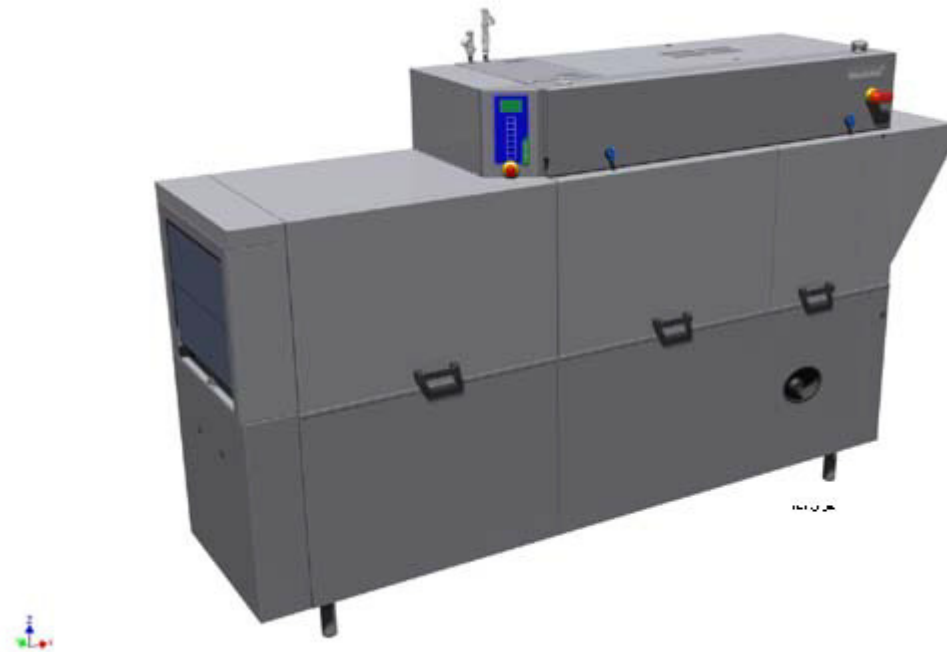
RACK CONVEYOR DISHWASHER WD-151E - WD-421E

(translation of the original documentation)



Read the manual before using the machine!

Installation and user manual



1. General instructions	1
1.1 Symbols used	2
1.2 Machine rating	3
1.3 Checking that the machine and manual correspond	3
1.4 EU Declaration of Conformity	4
2. Safety instructions	5
2.1 General information	5
2.2 Transport	6
2.3 Installation	6
2.4 Detergent and drying agent	6
2.5 Operation	7
2.5.1 High temperatures	7
2.5.2 Risk of crushing	7
2.5.3 Risk of slipping	7
2.5.4 Sounds	7
2.6 Cleaning the machine	7
3. Installation instructions	8
3.1 General information	8
3.2 Requirements for the installation site	8
3.2.1 Lighting	8
3.2.2 Ventilation	8
3.2.3 Power supply	8
3.2.4 Water	9
3.2.5 Drain/waste pipe	9
3.2.6 Space for servicing	9
3.3 Transport and storage	10
3.3.1 Unpacking	10
3.3.2 Recycling	10
3.4 Installation	11
3.4.1 Preparing for the installation	11
3.4.2 Positioning the machine	11

3.5 Connections	20
3.5.1 Electrical connection	22
3.5.2 Water connection, regardless of any options	22
3.5.3 Ventilation	22
3.5.4 Steam (optional)	23
3.5.5 Condensation water (option)	23
3.5.6 Drain/waste pipe	23
3.5.7 Detergent and drying agent	23
3.5.8 Setting / adjustment of flows	27
3.6 Installation and connection of auxiliary equipment and options	28
3.6.1 Machines with TimerStart	28
3.6.2 Machines with rinse cleaning functions	28
3.6.3 Limit switch	28
3.6.4 Conveyors	28
3.6.5 Emergency stop	28
3.7 Trial operation	29
3.7.1 Start-up schedule	29
3.8 Documentation	31
4. Operating instructions	32
4.1 Before washing	32
4.1.1 Machine design	32
4.1.2 Preparations before filling	34
4.1.3 Filling and heating the machine	36
4.1.4 Filing and heating the machine using TimerStart (optional)	37
4.2 Washing	48
4.2.1 Positioning of dishware in baskets	48
4.2.2 Washing	50
4.3 After use	53
4.3.1 Incorrect cleaning methods	53
4.3.2 Emptying	54
4.3.3 Daily cleaning	54
4.3.4 Cleaning and checking each week or as required	57
4.3.5 Cleaning in the event of an alert or 1 time / year	58
4.3.6 Operating problems	60
5. Technical information	65

1. General instructions

Read the instructions in this manual carefully as they contain important information regarding the correct, effective and safe installation, use and servicing of the machine. Service personnel should have access to all documentation for the machine.

Keep this manual in a safe place so that it can and should be used by other operators of the machine.



- The machine is intended to be used for washing dishware that is found in the general catering and restaurant trade. Other uses are NOT recommended!
- The machine can be equipped with a number of different options. Certain options may be standard in a number of countries. Check what your machine is equipped with.
- The machine's display indicates what the machine is doing. The machine's various temperatures and any alerts are also shown.
- The capacity requirements of the machine can be found in the TECHNICAL DATA chapter.
- The electronics in the machine are RoHS compatible.

Before the machine is started up and used, the following points should be observed:



- The SAFETY INSTRUCTIONS chapter must be studied carefully before commissioning the machine.
- Installation of the machine must be performed in accordance with the requirements and instructions indicated in the INSTALLATION INSTRUCTIONS and TECHNICAL SPECIFICATIONS chapters.
- Any personnel who may at some point use the machine must be trained in its operation, use and care.
- The machine should not be used by anyone suffering from a physical or mental illness.
- A close eye should be kept on any children in the vicinity of the machine to ensure they do not tamper with it.
- All cover plates must be installed during use.



The machine and equipment requires an annual service. Contact one of our authorised and trained service companies for such a service.

General instructions

1.1 Symbols used



This symbol warns of situations where a safety risk may arise. The instructions given should be followed in order to prevent injury and dangerous situations.



This symbol on a machine part warns of electrical equipment. The machine must be entirely non-live during servicing, turn off the power at the power switch and if required, the switch should be locked to prevent unintentional operation. The component may only be removed by a qualified electrician.



This symbol warns that the machine's electronics are sensitive to electrostatic discharge (ESD), which is why a static electricity wristband must be used when handling the electronics at all times.



This symbol explains the right way to perform a task in order to prevent poor results and/or damage to the machine.



This symbol identifies recommendations and hints to help you get the best results when washing, to increase the machine's lifespan and reduce the risk of emergency shutdown.



This symbol explains the importance of careful and regular cleaning of the machine to meet hygiene requirements.



This symbol warns of the importance to read the manual before using the machine.



This symbol warns that local regulations must be followed for recycling of packaging etc. as well as the destruction of the machine.

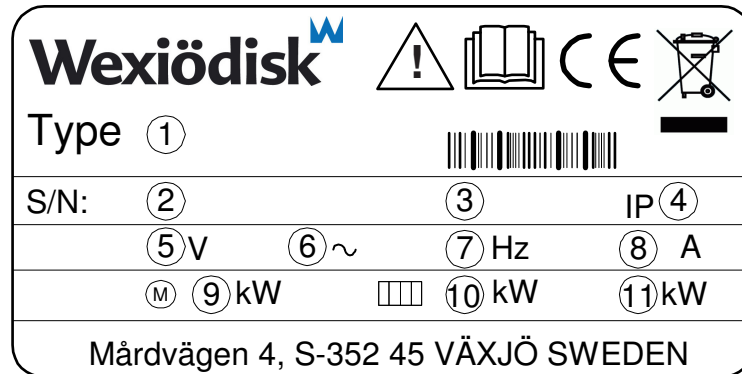


This symbol shows where any earth cable for potential equalisation can be connected. The earth bolt is placed on the machine's stand.

General instructions

1.2 Machine rating

The machine has two rating plates, one of which is placed at the bottom of one side of the machine and the other in the electrical cabinet. The technical information on the plates is also included on the machine's wiring diagram. The various rating fields show:



1. Machine type
2. Machine serial number
3. Year of manufacture
4. Enclosure protection class
5. Voltage
6. Number of phases with or without neutral
7. Frequency
8. Main fuse
9. Motor output
10. Electrical heating output
11. Max. output

1.3 Checking that the machine and manual correspond

Check that the type description on the rating plate corresponds with the type description on manual cover page. If manuals are missing, it is possible to order new ones from the manufacturer or the local distributor. When ordering new manuals, it is important to quote the machine number found on the rating plate.

General instructions

1.4 EU Declaration of Conformity

A so-called EU Declaration of Conformity is provided on delivery of the machine.

Wexiödisk

CE DECLARATION OF CONFORMITY

This declaration of conformity only refers to the machine/product in the condition in which it is supplied, not any additions or modifications made by the customer/user.

1 Manufacturer: Wexiödisk AB Mårdvägen 4 S-35245 Växjö, Sweden
 Tel: +46 (0)470 77 12 00 Fax: +46 (0)470 23752 E-mail: wexiodisk@wexiodisk.com

2 Representative: Wexiödisk AB
 Fastus ehf, IZB, Marlin Food Equipment Ltd, Metfit Pty Ltd,
 M/s Ashwarya Cosso Kates Fit Ltd, Nakantini M/C Co Ltd, QMB Corporation, Retail doo,
 SHS Hygiene Kuvdilian, TFN Group, Wexiödisk AB, Wexiödisk UK

3 Compiler of technical documentation: Magnus Ericsson

4 Our machines are manufactured 2016 in accordance with applicable EU directives and we declare under sole responsibility that the following products:

5 CE Declaration of Conformity,
 EU's Machinery Directive 2006/42/EC, annex IIA,
 EU's Low-voltage directive 2006/95/EC
 EU's EMC-directive 2014/53/EU
 EU's WEEE directive 2002/96/CE
 EU's RoHS-directive 2011/65/EU

6 Harmonised standards:
 EN 12002 Machine safety - General principles for design - Risk assessment and risk reduction
 EN 50335 Safety - Particular rules for corded tools
 EN 50329 Specification for degrees of protection provided by enclosures (IP code)
 EN 522 Measurement methods for electromagnetic risks of household appliances and similar apparatus with regard to human exposure
 EN 55022 & 2 Electromagnetic compatibility (EMC) - Immunity standard for industrial environments
 EN 55014-1 Electromagnetic compatibility - Requirements for household appliances, electric tools and similar apparatus - (EMC) - Part 1: Emission
 EN 50181 Technical documentation for the assessment of electrical and electronic products with respect to the restriction of hazardous substances

7 The above directives and standards are common to the different machine groups. Standards in the tables below are specific to the different machine groups.

Single units, accessories, household appliances with accessories: WD-400 (111000-1) WD-151E & WD-151E & WD-151E (112000-1) WD-400 (113000-1) WD-151E (114000-1) WD-151E & WD-151E (115000-1) WD-151E & WD-151E (116000-1) WD-151E & WD-151E (117000-1) WD-151E & WD-151E (118000-1) WD-151E & WD-151E (119000-1) WD-151E & WD-151E (120000-1)	Harmonised standards to: EU's Machinery Directive 2006/42/EC, annex IIA EN 60204-1 Safety of machinery - Electrical safety of machinery - Part 1: Requirements for safety of electrical and electronic apparatus - Particular for machines - Corded and electric corded machines
General use, special machines: WD-151E & WD-151E & WD-151E & ACS-3007 & WD-151E & WD-151E & WD-151E (121000-1) (General assembly drawing) WD-151E (122000-1)	Harmonised standards to: EU's Machinery Directive 2006/42/EC, annex IIA EN 60204-1 Safety of machinery - Electrical safety of machinery - Part 1: Requirements for safety of electrical and electronic apparatus
Special machines: ACS 4000C3000 (123000-1)	Harmonised standards to: EU's Machinery Directive 2006/42/EC, annex IIA EN 60204-1 Safety of machinery - Electrical safety of machinery - Part 1: Requirements for safety of electrical and electronic apparatus

8 Växjö 2016-04-20
 Magnus Tjansson
 Managing Director

CE_16_2

- Contact details of the manufacturer (Wexiödisk AB, Mårdvägen 4, SE-35245 Växjö, SWEDEN, Tel: +46 470 771200, Fax: +46 470 23752, E-mail: wexiodisk@wexiodisk.com).
- Representatives of Wexiödisk AB.
- Person responsible for the product's documentation.
- Year of manufacture of the product.
- The EU Directives with applicable provisions to which all the machines, special machines and accessories comply.
- Harmonised standards for the Directives specified, and which the machines, special machines and accessories meet, wherever relevant.
- Model designation and serial number of the machines, special machines and accessories the document applies to.
- Place and date with signature and name (in block letters) of the person responsible for ensuring compliance with legislation and regulations.

2. Safety instructions



Read the chapter GENERAL INSTRUCTIONS carefully before starting work.

2.1 General information



The machine is CE marked, which means that it complies with the requirements of the EU Machinery Directive with regard to product safety. Product safety means that the design of the machine will prevent personal injury or damage to property. The CE mark is only valid for an unmodified machine. Any damage to the machine arising from failure to follow the instructions will invalidate the supplier's warranty and product liability.



Installation, repairs and servicing must be performed by an authorised engineer in accordance with local and national rules in effect for such work with water and drainage systems, electricity, ventilation and steam. We recommend that the work is performed by the manufacturer or one of the manufacturer's authorised service companies.

To further improve safety during installation, operation and servicing, the operator and the personnel responsible for installing and servicing the machine should read the safety instructions carefully.



The machine's electronics are sensitive to electrostatic discharge (ESD), which is why a static electricity wristband must be used when handling the electronics at all times.

Before the machine enters service, ensure that the personnel are given the necessary training in handling and looking after the machine.

In order to avoid dangerous situations, the following must be followed:



- Switch off the machine immediately in the event of failure or malfunction.
- Make sure the machine is non-live before removing the cover plate. Turn off the power using the power switch. If required, the switch must be locked to prevent unintentional operation.
- Shut off the tap for incoming water and drain the machine's tank(s) before starting work. Let the machine cool down as pipes for water, washing pumps, booster heaters and valves become very hot when the machine is in operation.
- The machine and equipment requires an annual service. The machine should be serviced by a person authorised or trained to do so by us. Use original spare parts.
- Warranty repairs must be performed by an authorised company. Contact an authorised service company to draw up a programme of preventive care and maintenance. For authorised service companies, please see www.wexiodisk.com or contact Wexiödisk AB.
- The regular checks described in the manual must be carried out in accordance with the instructions.

Safety instructions

2.2 Transport



Handle the machine with care during unloading and transport; there is a risk of it tipping over. Never lift or move the machine without using the wooden packaging to support the stand.

2.3 Installation



- The machine is designed for quick electrical installation.
- The machine must be connected to a lockable main switch.
- Make sure that the mains voltage is the same as that indicated on the machine's rating plate.



For increased safety, it is recommended to equip the installation with a ground fault circuit interrupter.

2.4 Detergent and drying agent



Be aware of the risks involved in handling detergents and drying agents. Protective gloves and safety glasses should be used when handling, and an eyebath should be within easy access. Read the warning text on the detergent and drying agent containers as well as the detergent supplier's instructions.

Safety instructions

2.5 Operation



Be very careful around the machine when it is in operation.

2.5.1 High temperatures



- The temperature of the washing and rinsing water is 60°C and 85°C. Do not open the machine until the rinsing phase has finished. The steam that comes out of the machine after the wash has been completed is hot.
- Avoid touching hot pipes and booster heaters. The machine's outer jacket can also become hot during operation.

2.5.2 Risk of crushing



The machine, and any equipment, has moving parts before, during and after washing. Be careful therefore to avoid crushing injuries. In connection with service or repairs that require the hood to be open, it must be secured by means of a prop for example.

2.5.3 Risk of slipping



The floor should be kept dry to eliminate any risk of slipping. Mop up any water and leftover food that has been spilt.

2.5.4 Sounds



The machine is not silent during operation, see TECHNICAL SPECIFICATIONS. Hearing protection may therefore need to be used.

2.6 Cleaning the machine



The water in the tank has a temperature of approximately 60°C and contains detergent. Be careful when draining and cleaning the wash tank. Wear protective gloves and safety glasses and have an eyebath within easy access.

3. Installation instructions



Read the chapters GENERAL INSTRUCTIONS and SAFETY INSTRUCTIONS carefully before starting work.

3.1 General information



Read these instructions carefully, as they contain important information regarding the correct installation method.



- The instructions should be used together with the machine's wiring diagram. These can be found in the machine's electrical cabinet.
- The machine can be equipped with a number of different options. Certain options may be standard in a number of countries. Check what your machine is equipped with.
- If holes need to be drilled in the machine, the holes must be fitted with an edge strip or similar protection.

3.2 Requirements for the installation site

3.2.1 Lighting

In order to ensure the best possible working conditions during installation, operation, servicing and maintenance, make sure that the machine is installed in a well-lit room.

3.2.2 Ventilation

The machine produces heat and steam when in operation. In order to ensure the best possible working conditions, a certain air renewal rate is required in the dishwashing room. The ventilation requirements for the dishwashing room are to be dimensioned on the basis of the applicable standards.

3.2.3 Power supply

Power supply connections are made by qualified personnel in a way that complies with local and national regulations. The machine's capacity requirements are stipulated in TECHNICAL SPECIFICATIONS.

Installation instructions

3.2.4 Water

Water connections are made by qualified personnel in a way that complies with local and national regulations. The machine's capacity requirements are stipulated in TECHNICAL SPECIFICATIONS.

3.2.5 Drain/waste pipe

There must be a waste pipe with an effective trap for the machine's waste water and for water used for rinse cleaning. The machine's capacity requirements for drainage are stipulated in TECHNICAL SPECIFICATIONS.

3.2.6 Space for servicing

A 1-metre area should be left clear in front of the machine for servicing purposes. Depending on if the machine has different accessories, there may also be such a requirement at the infeed and outfeed ends as well as above the machine.

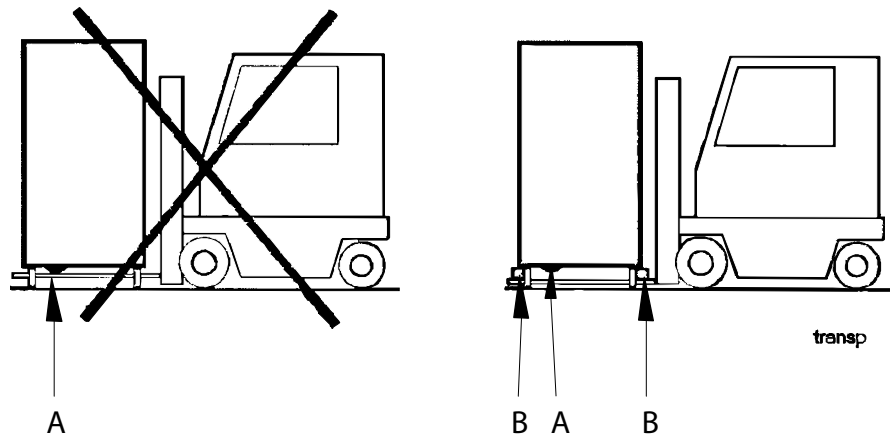
Installation instructions

3.3 Transport and storage

Always transport the machine in an upright position.



Take care during transport, as there is a risk of tipping. NB! The machine must not be transported without a pallet or other support. Some form of support beam must always be used along the sides of the machine during transport. Otherwise the machine may become damaged. When transporting the machine without a normal wooden pallet, always check that none of the components underneath the machine can be damaged.



A=Pumps
B=Spacers



If the machine is not being installed immediately, it must be stored in a frost-free area where the air is dry.

3.3.1 Unpacking

Check that all parts have been delivered by comparing them with the delivery note.

Remove the packing material. Inspect the machine for any transport damage.

3.3.2 Recycling

Packaging must be sent for destruction or recycling in accordance with local regulations.



The machine is manufactured from stainless steel plate, among other things, and also contains electronic components. Recycling of the appliance when its economic lifetime has been reached must be carried out in accordance with current rules and regulations.

3.4 Installation

3.4.1 Preparing for the installation

Check that there is sufficient room for the machine at the installation location.



- Check that correct connections are available for water, electricity, drainage and possibly steam at the installation location. See TECHNICAL SPECIFICATIONS.
- Check that the overheating protection device is reset.

3.4.2 Positioning the machine

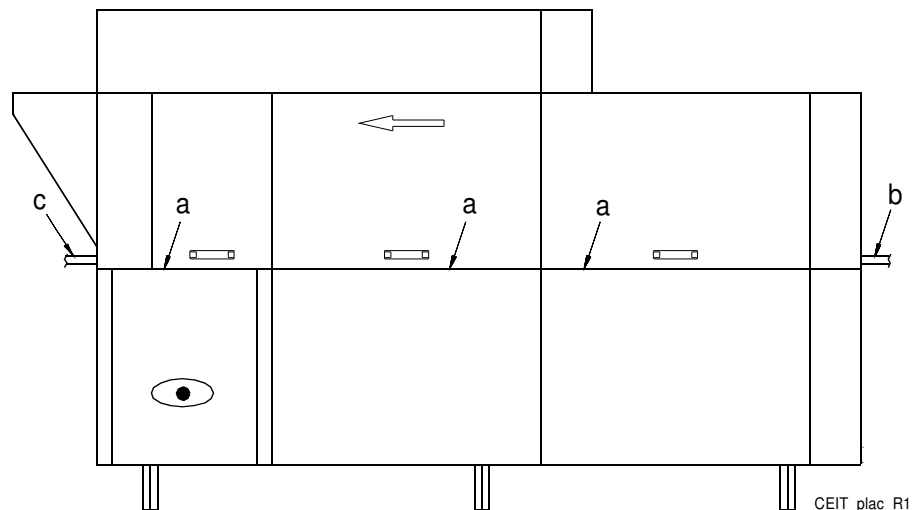
Check the following points before the machine is placed in position:



- Check that the fuse for the machine at the site is off, blocked and that outgoing electrical circuits from the machine are non-live.
- Remove the protective plastic on the sides which are to be stood against a wall.
- The distance between the wall and machine should be at least 15-30mm.

Place the machine in position and check that it, and any accessories, are horizontally level. Adjust the height with the legs.

Check with a spirit level that it is standing level. Place the spirit level on the join between the machine tank and the upper part. Once the machine has been filled with water, do another check to make sure the machine is standing level.



The machine must be evenly balanced on three sides:

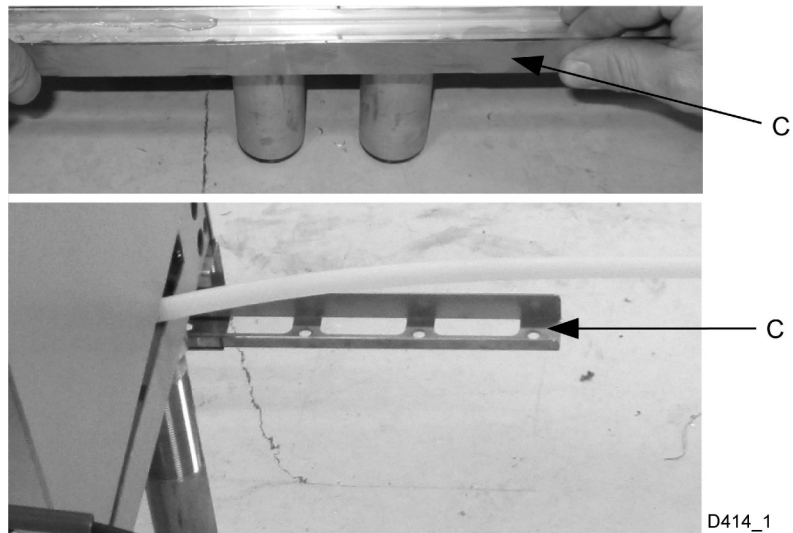
- On the cover edge of the front side (a) (tank body).
- On the cover of the infeed (b).
- On the cover of the outfeed (c).

Installation instructions

Assembling the divided machine (optional)

Parts which must be assembled are prepacked inside each section together with the necessary bolts, nuts, etc.

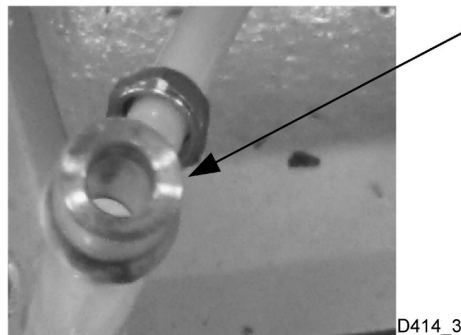
- Dismantle the lower cover plates (on the front side) beside the pre-wash and chemical wash.
- Remove the lower rear cover plate beside the chemical wash.
- Fit the support rails (C) to the lower bars, front and rear.



- Feed through the hose at (D) and (E) on the image.



- Fit the coupling supplied to the hose.



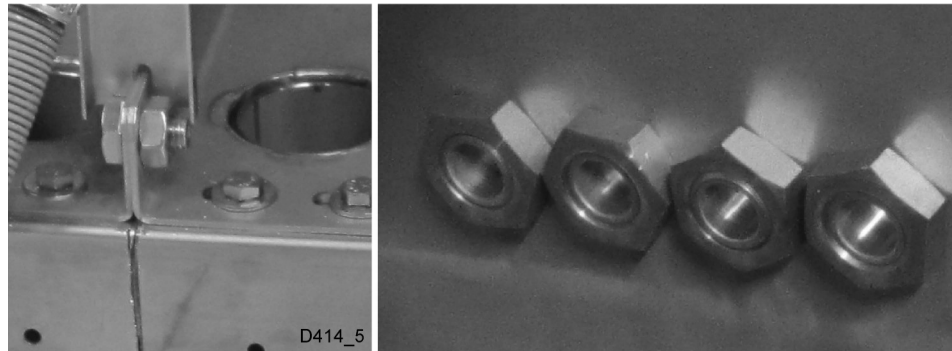
- Feed through the electricity cables in the designated places.

Installation instructions

- Slide the two sections towards each other, but do not close completely. There must be enough space to allow silicone to be applied around all openings.
- Apply silicone around all screw holes and other openings on both sections.



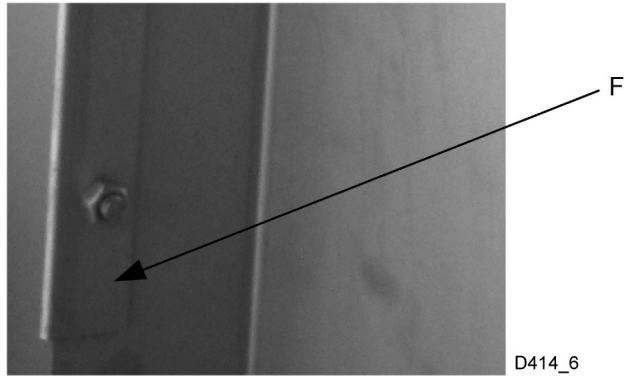
- Slide the parts together, hold these in place using clamps and fit any screws and nuts.



- Check with a spirit level that the machine is standing level.
- Wipe away any silicone that may have leaked out.

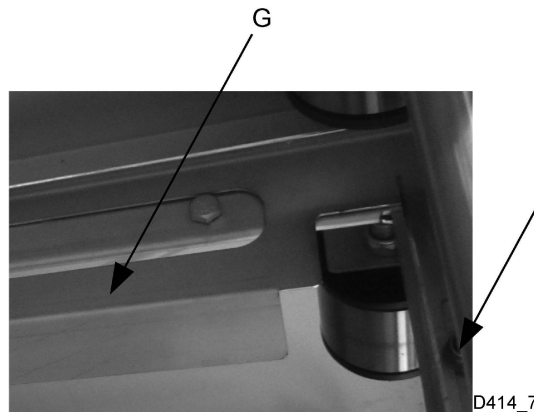
Installation instructions

- Now fit the stainless clamp strips (F) to the interior of the machine above the joint between the sections. Apply silicone to the strips before fitting them into place. Fit the strips in the following arrangement: 1- upper strip, 2 - lower strip, 3 - rear strip.



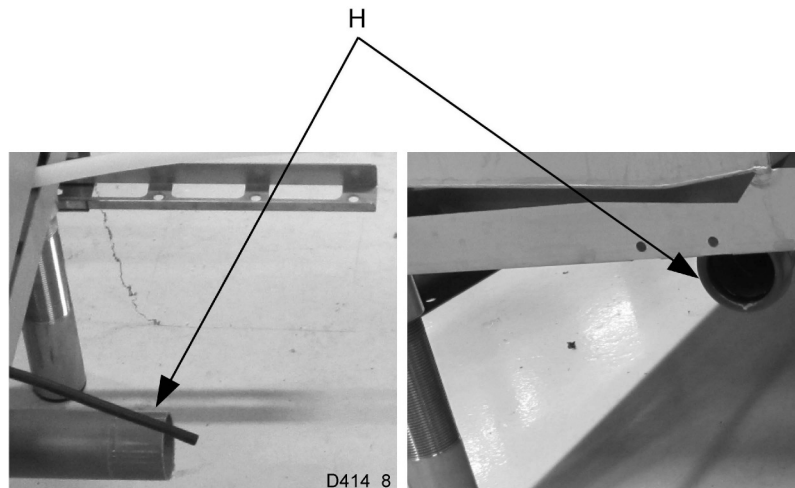
D414_6

- Finally, fit the curtain rail (G) This must be screwed firmly into the middle of the oval hole.



D414_7

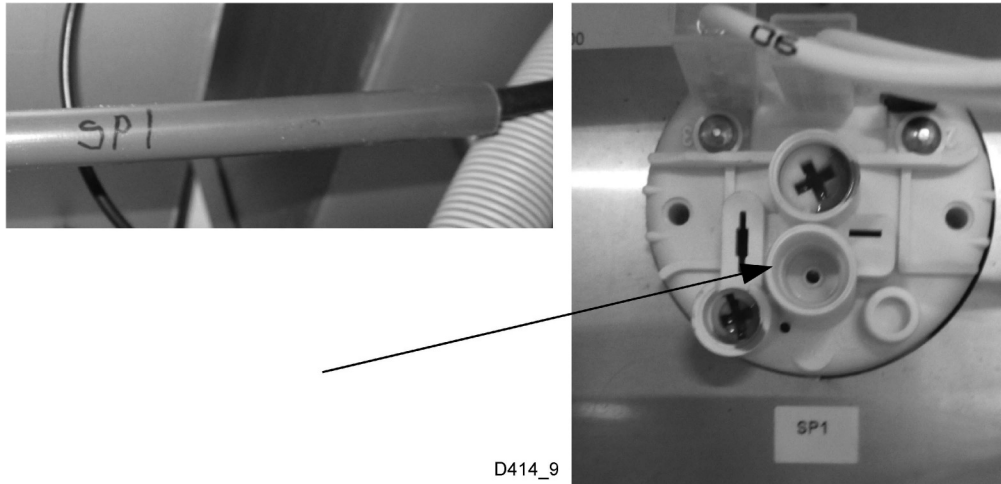
- Assemble the drain (H).



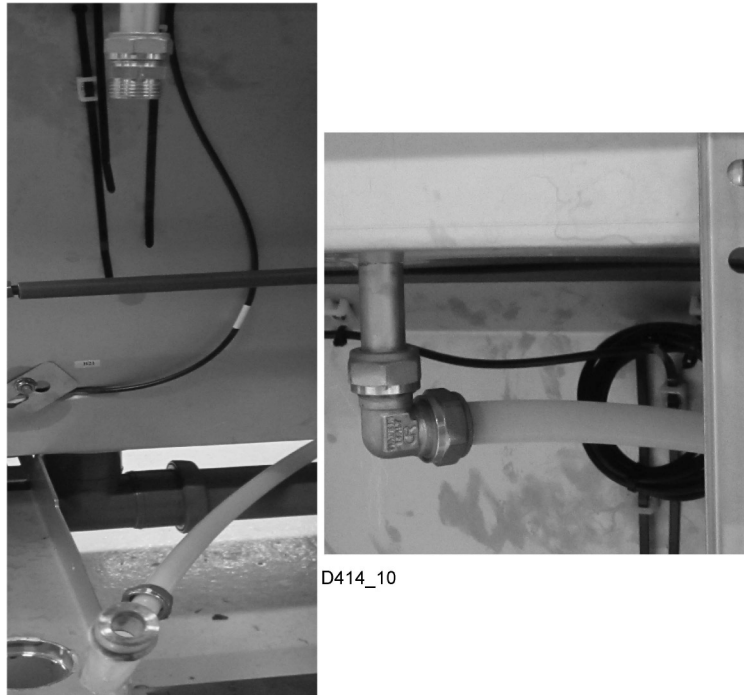
D414_8

Installation instructions

- Connect the pressure stat hose 'SP1' in its designated place.

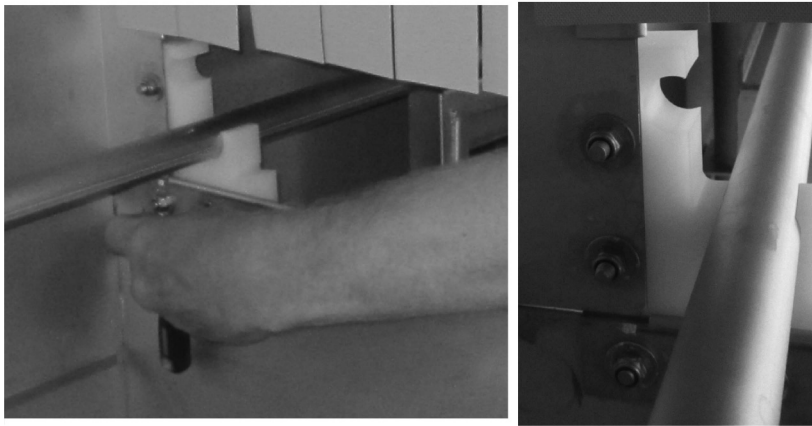
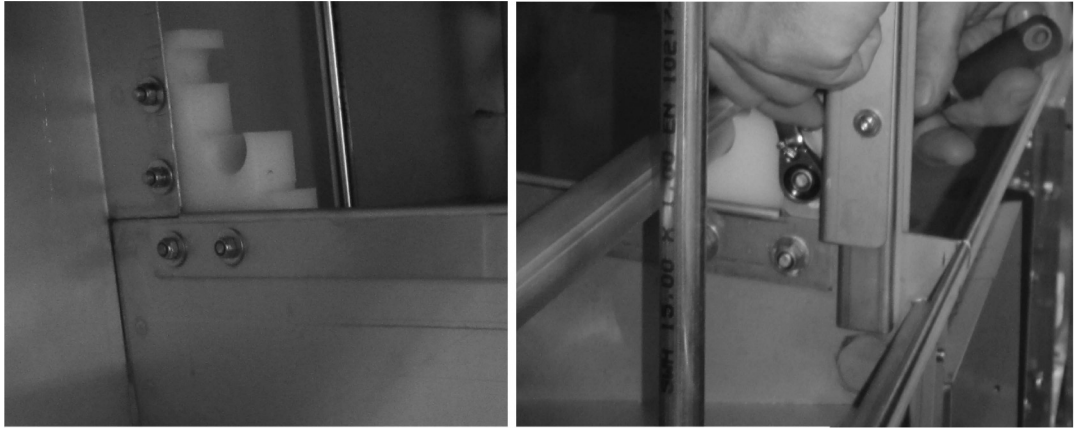


- Connect the water connection.



Installation instructions

- Now fit the feed cradle and emptying device.

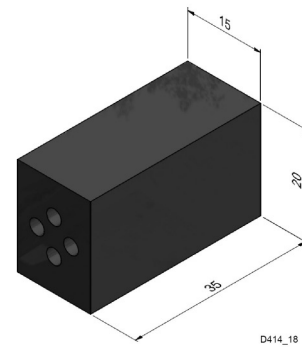
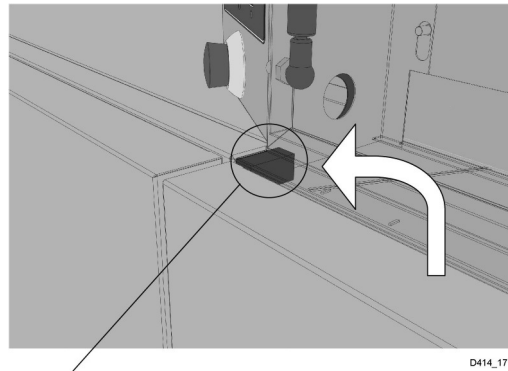


D414_11

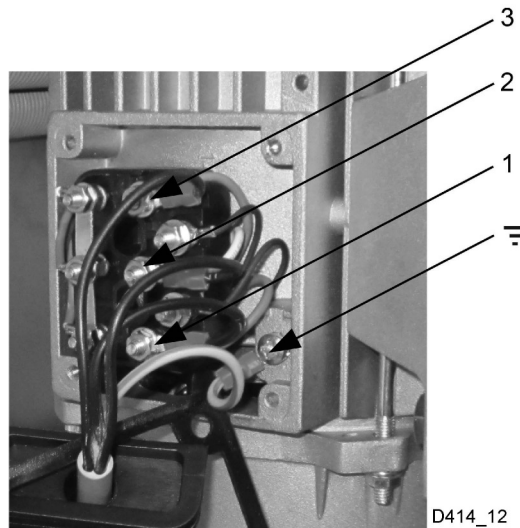


Installation instructions

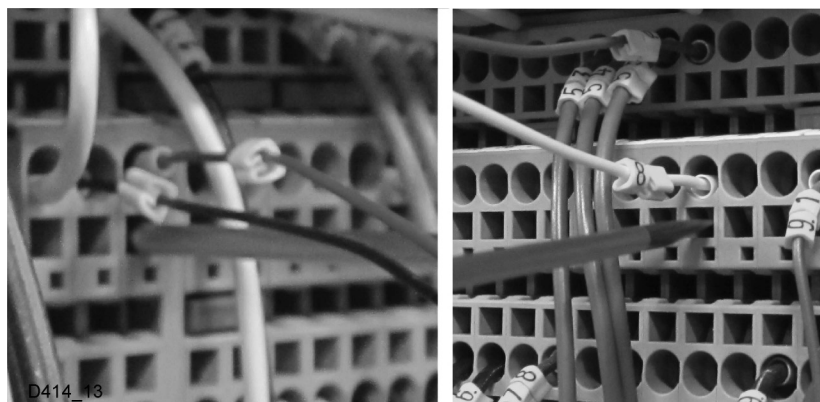
- Fitting the door seal to the electrical cabinet. Place the door seal (WD400277.31) in the cable channel. This seals the hole for the door switch and photocell cable.



- The wiring must be positioned and anchored in the designated places for this.
- Check all couplings against the machine's wiring diagram!
- Switch on the wiring for washing pump M1, the cables are labelled in accordance with the image.

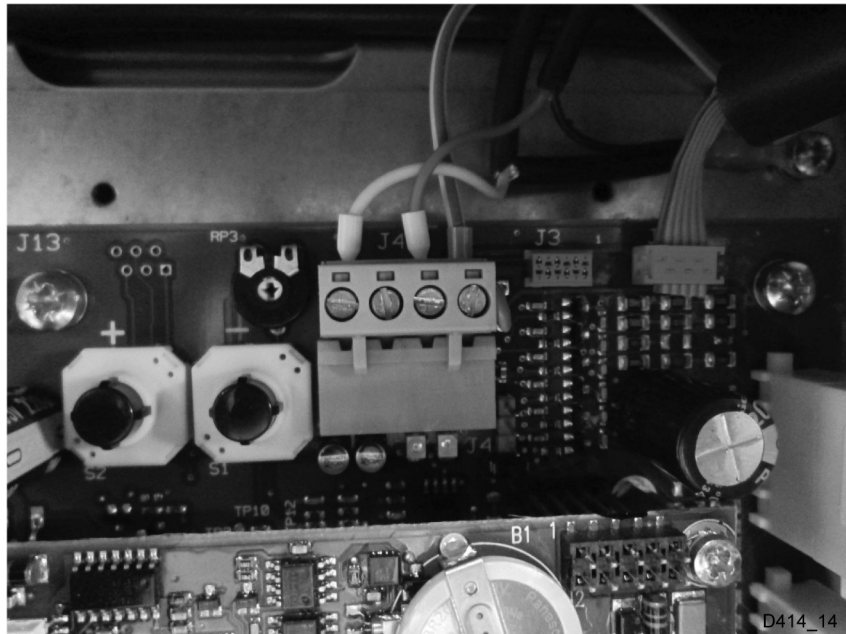


- Connect the wiring for the door switches to the terminals in accordance with the labelling.

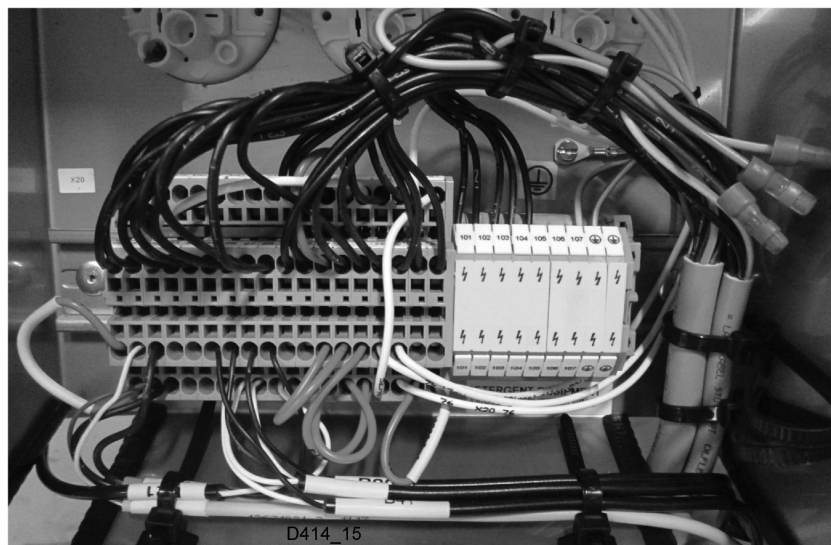


Installation instructions

- Connect the wiring for photocell B61 and B62 to the green contact J44 on computer card A1.



- Connect the temperature sensor to the terminal box in accordance with the machine's wiring diagram.



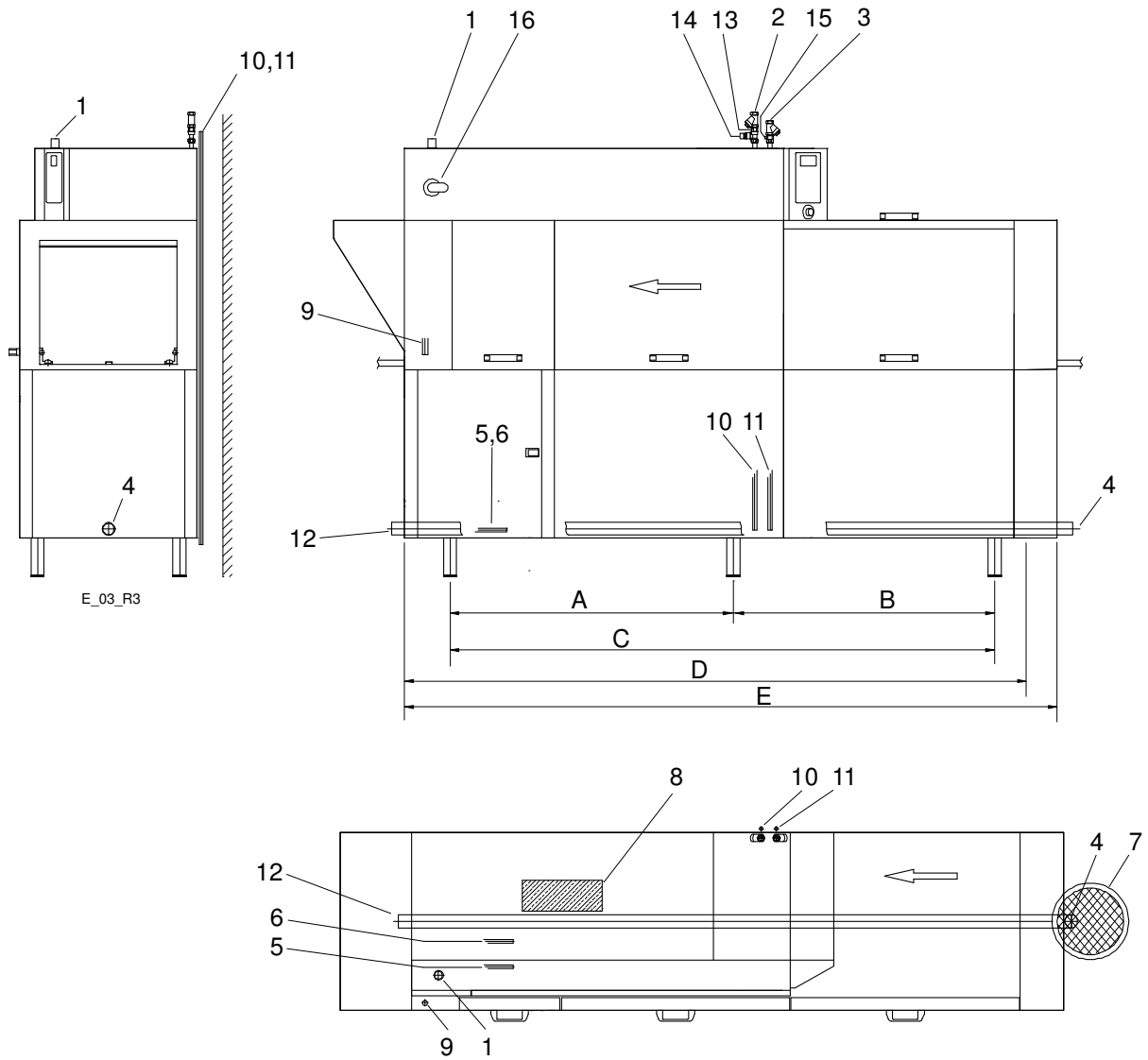
Installation instructions

- Check that all wiring has been connected. NB! Perform an additional check of the earth wiring.



Installation instructions

3.5 Connections



E_03_R3

Installation instructions

1. Electrical connection
2. Cold water connection/filter
3. Hot water connection/filter
4. Drain/waste pipe connection
5. Steam connection (option)
6. Condensing water connection (option)
7. Floor drain
8. Condensing battery exhaust fan
9. Alternative electrical connection
10. Alternative cold water connection (option)
11. Alternative hot water connection (option)
12. Alternative hot water connection (option)
13. Non-return valve
14. Vacuum valve
15. Detergent dosage outlet
16. Main switch

	WD-151E	WD-211E	WD-241E	WD-331E	WD-421E
A				1360	2260
B				1670	1670
C	1230	1830	2130	3030	3930
D	1535	2135	2435	3335	4235
E *	1655	2255	2555	3455	4355

* = Installation dimensions at bench height

In the following chapter, figures are given in brackets to clarify what needs to be done. These numbers refer to image and list above.

Installation instructions

3.5.1 Electrical connection

Information about electrical connections is available on the machine's wiring diagram which is provided on delivery. Store the diagrams in the plastic pocket, located in the electrical cabinet, even after installation.



- The machine is designed for quick electrical installation.
- The machine has a built-in main switch (16). Connect the electric cable at (1). In special cases, certain dishwashers may have an electrical connection from the floor. The cable is then drawn behind the cover plate at (9).
- Check the direction of rotation of the pump motors during operation when the tanks are full of water. The direction of rotation must conform without exception to the direction of the arrow on the pump. Stop the dishwasher immediately if the direction of rotation is incorrect and change two of the incoming phases.

After completing the installation, switch on the main switch and all circuit breakers.

3.5.2 Water connection, regardless of any options



- A shut-off cock must be installed on the incoming pipe.
- It is important that the water supply has sufficient pressure to ensure the correct flow of water to the machine. The required water flow and pressure can be found in the TECHNICAL SPECIFICATIONS. If the water pressure is too low, a booster pump must be fitted.

The water pipe is connected at (2, 3) or at (10, 11). If the machine is connected with a hose, this should be steel braided and have an internal diameter of at least 12mm.

The hot water connection (3) on the machine is fitted with a filter.

The cold water connection (2) on the machine is fitted with a filter, non-return valve and vacuum valve.

As the machine is fitted with a "Break Tank", the connection is fitted with a filter and non-return valve.

3.5.3 Ventilation

The machine's heat load for the room is stipulated in TECHNICAL SPECIFICATIONS.

The machine has a condensing battery connected to an exhaust fan to reduce the amount of steam released. Extractor fans for extracting steam can be installed above the infeed and outfeed openings, as well as above the area of the machine where steam is emitted from the condensing fan.

If a hood is fitted over the machine, it must be positioned so that it covers the drying rack after the machine and preferably also the exhaust from the condensing fan.

Installation instructions

3.5.4 Steam (optional)



A shut-off cock must be installed on the incoming pipe.

If the machine is steam-heated, connect the pipes for steam at (5).

3.5.5 Condensation water (option)



A shut-off cock must be installed on the incoming pipe.

If the machine is steam-heated, connect the pipes for condensation water at (6).

3.5.6 Drain/waste pipe

The waste water system connected to (4 or 12) should consist of a 50mm metal pipe that will withstand mechanical impacts. The drain must run to a floor drain, where its opening must be above the water level.

The drain can be fitted to the left or right. Remove the perforated section of the end plate and pull the pipe through the hole. Connect the drain and run to the floor drain where it should flow freely above the water level.

Ensure that the drain connection is kept in place by using e.g. cable ties in the designated areas.

3.5.7 Detergent and drying agent



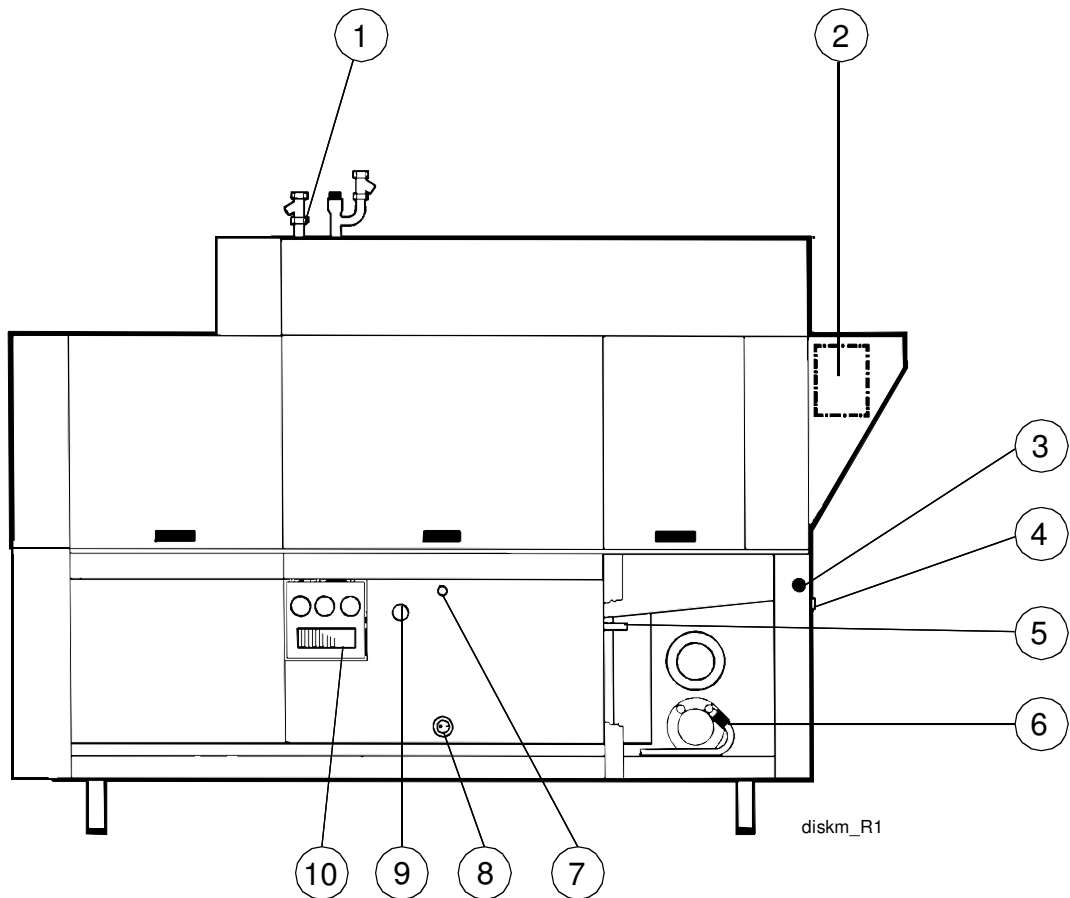
- Check what your machine is equipped with, which depends on the model, machine type and country.
- With machines connected to cold water, the water pipe temperature may be too low for use of powder or paste type detergents.
- If liquid detergent is used together with Wexiödisk's detergent pump, the detergent must be placed under the machine's tank level.

If equipment for a different type of detergent is used, it should preferably be put on the wall behind the machine to avoid holes being drilled unnecessarily in the machine.

The process of setting the detergent and drying agent dispenser is described in the ADJUSTMENT INSTRUCTIONS.

For information about electrical connections, see the electrical diagram.

Connection of the equipment



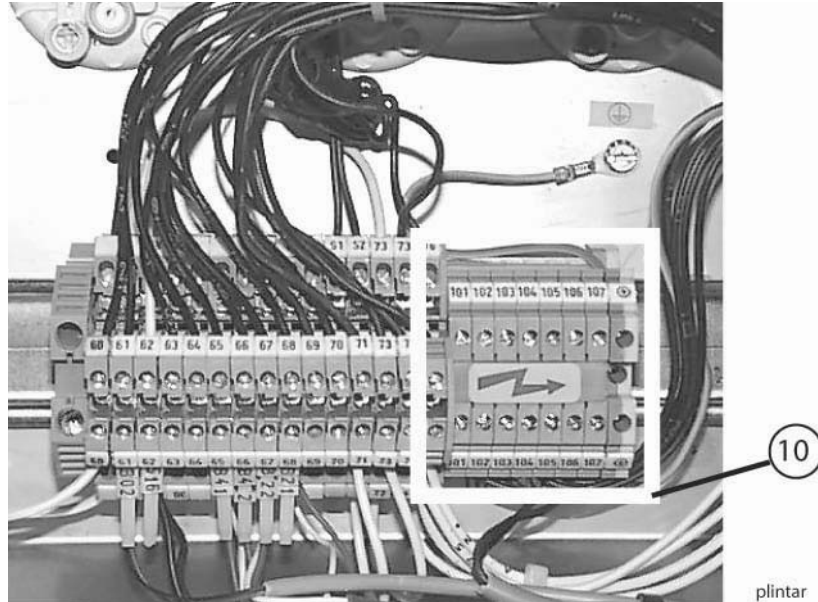
1. Hot water outlet
2. Alternative location of detergent equipment
3. Hole \varnothing 25mm for hose intended for detergent in solid form
4. Hole \varnothing 19mm for drying agent hose
5. Plugged connection \varnothing 18mm for connecting hose for detergent in solid form
6. Drying agent dosage outlet
7. Plugged connection \varnothing 11mm for liquid detergent
8. Plugged hole \varnothing 22mm for measuring cell. The measuring cell is connected in the terminal box (10).
9. "DETERGENT" adhesive label. The label is affixed to the inside rear wall of the chemical wash tank and indicates the alternative position of the detergent opening. Drill a hole from the back of the chemical tank through the plugged hole in the cover plate.
10. Terminal box with connections for detergent and drying agent.

Installation instructions

Electrical connection of the equipment

The machine comes ready for fitting detergent and drying agent equipment, but this is not included with the machine.

To avoid making unnecessary holes in the machine, the equipment should be placed on the wall behind the machine on the outfeed side.

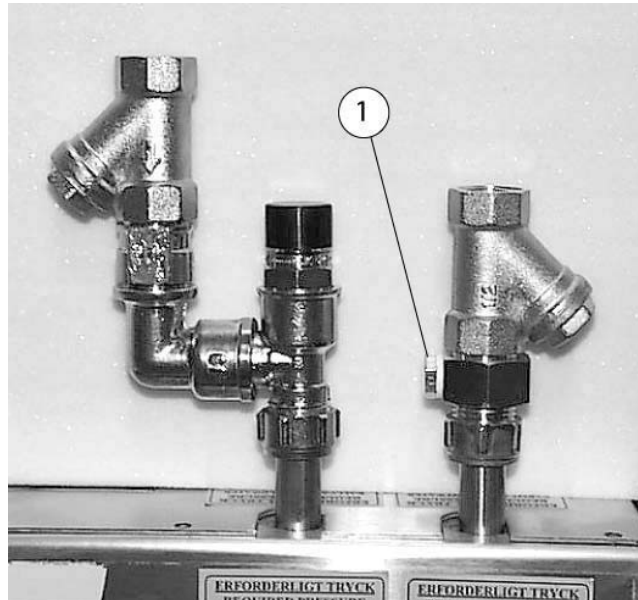


Connections for detergent and drying agent, NB! 230V

Installation instructions

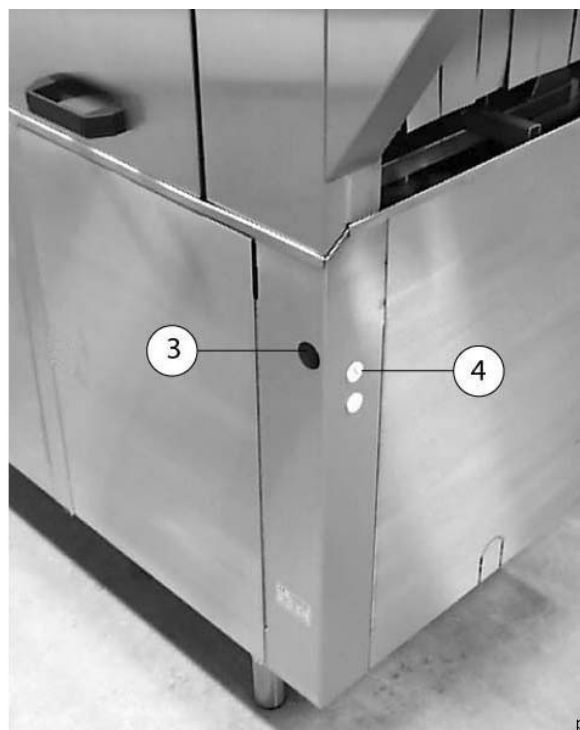
Detergent dosage

The water outlet (1) for the detergent dosage is placed on the incoming hot water pipe.



varmvatten

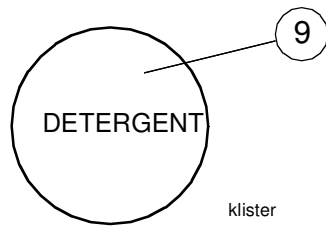
Hot water outlet



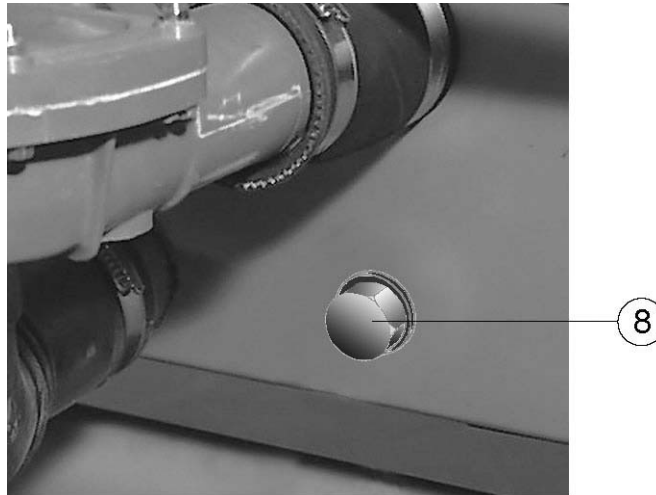
proppade_R1

Plugged holes for hoses for detergent and drying agent

Installation instructions



Adhesive label indicating alternative opening for detergent

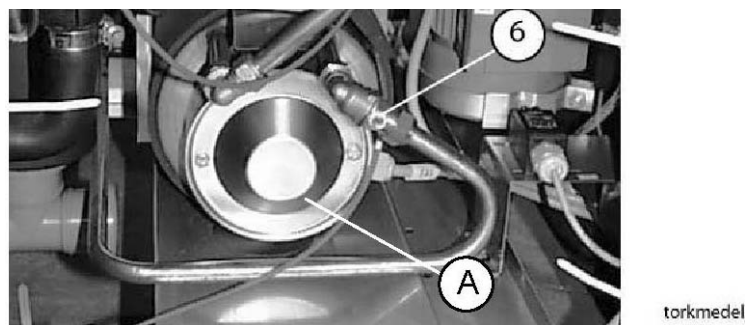


Plugg

Plugged hole for measuring cell

Drying agent dosage

The connection for drying agent (6) is located next to the booster heaters.



*Drying agent dosage outlet
A=Lower booster heater*

3.5.8 Setting / adjustment of flows

This is described in the chapter ADJUSTMENT INSTRUCTIONS.

3.6 Installation and connection of auxiliary equipment and options



- Once the machine is in place and has been adjusted horizontally and vertically, the auxiliary equipment can be fitted.
- The machine can be equipped with a number of options. Check what your machine is equipped with, which depends on the model, machine type and country.
- The machine comes ready for the connection of WD-PRM60/90. Loop X20 (see the machine's wiring diagram) must be removed when WD-PRM60/90 is retrofitted.

The various options normally place no specific requirement on the installation.

3.6.1 Machines with TimerStart



- Check the machine's software version, which should be 1.49.6.1 or later.
- Check that the reference value for row 108 is set to YES.

3.6.2 Machines with rinse cleaning functions



- The machine should be connected to hot water for optimum functioning.
- It is possible to connect detergent to this function; this is done using the rinse cleaning valve.

3.6.3 Limit switch

The limit switch is installed on the lower terminal block, which is placed in front of the chemical wash tank. When connecting, remove the existing clamp on the connection points. See the machine's wiring diagram NB! The machine's voltage is 24V.

3.6.4 Conveyors

Installation of in- and outfeed equipment (conveyors, curves) must be performed in accordance with the wiring diagram's main circuit instructions. This applies to machines equipped with a motor switch and contactors for this equipment.

Connection of supply voltage to the in- and outfeed equipment is performed in accordance with the wiring diagram's instructions. NB! The machine's voltage is 24V.



When fitting a motor switch and contactors retrospectively, use the components on the wiring diagram and follow the connection instructions. This affects the manufacturer's liability - see "SAFETY INSTRUCTIONS."

3.6.5 Emergency stop

An additional emergency stop can be connected at the lower terminal block, which is placed in front of the chemical wash tank. Replace the existing clamp on the connection points when connecting a new emergency stop. See the machine's wiring diagram NB! The machine's voltage is 24V.

Installation instructions

3.7 Trial operation

Prepare the machine for trial operation with the help of OPERATING INSTRUCTIONS. The instructions describe the measures that must be taken to prepare the machine for operation.

3.7.1 Start-up schedule

This should be completed and signed by the customer on start-up.

Machine type:

Machine serial number:

Installation date:

Customer:
Address for visitors
Postcode + Town/City:
Telephone:
Contact:

Dealer:
Telephone:
Contact:

Installation company:
Telephone:
Contact:

Service company:
Telephone:

Detergent supplier:
Telephone:

End-user signature:

Name (in capitals):

Read the installation and user manuals carefully. Then check the following points:

Installation instructions

1. Check:

- Water, steam and drain connections
- That the machine is evenly balanced
- That the closed doors are in line
- That the benches, conveyor bend etc. are correctly fitted
- Detergent and drying agent
- That the filters, level pipe, filter tray and curtains are in position
- The mini-switches for all the heating elements must be in the OFF position.
- That the overheating protection device is reset

2. Filling the machine:

- Close the doors
- Switch on the main switch and press 0/1
- Fill the machine with water in accordance with the OPERATING INSTRUCTIONS
Note: It takes approximately 10 minutes to fill the system. In ELECTRONIC machines, the booster heaters fill automatically when the doors are closed. The machine has a filling check function for the booster heaters. When the function is activated, a check is carried out to ensure that the booster heaters are full of water, before the element is switched on.
Note: If the filling process is interrupted using the main switch, the check starts again from the beginning.
- When the filling check has been completed and all the tanks are full, the mini-switches for the booster heaters switch on.

3. Check the setting of the reference values:

- All the reference values have been set to the recommended values on delivery
- Check that the motor cut-off switch for the infeed and outfeed conveyors have been set correctly

4. Start the machine:

- Check the direction of rotation of the pumps
NB! If the direction of rotation is wrong, the phase must be inverted on the incoming feed.
- Check that the overload switch on the feed cradle is functioning.

5. Lock the impulse arm and the photocell in the activated position:

- Run the machine continuously for 10 minutes. Check and adjust the temperature and water flow
- Final rinsing (in accordance with the table in the manual)
- Intermediate rinsing (in accordance with the table in the manual)
- Pre-rinsing rinsing (in accordance with the table in the manual)

Installation instructions

6. Run a number of washes complete with loads and check that:

- The basket is in the correct position after the photocell
- There are no water leaks
- The door breaker works
- The limit switch is working
- Steam discharge from the machine
- The water temperatures are maintained
- The washed items are clean
- The washed items are dried

7. Final check: Empty the machine and turn off the power using the main switch:

- Re-tighten all the connections on the circuit breakers and contactors
- Check that all the mini-switches and the motor cut-off switch are in the on position.
- Display the quick guides supplied with the machine

8. Train and inform personnel concerning:

- Washing
- Care (daily, weekly and other frequencies)
- Recommendation for annual service

3.8 Documentation



For correct use and servicing, it is essential that the documentation accompanying the machine is made available to personnel who will be using the machine. The installation and user manual, which describes handling and care among other things, should be stored near the machine.

4. Operating instructions



Read the chapters GENERAL INSTRUCTIONS and SAFETY INSTRUCTIONS carefully before starting work.



This chapter describes what must be done with the machine:

- Before washing
- How washing should be performed
- After completed washing
- In the event of error messages and troubleshooting

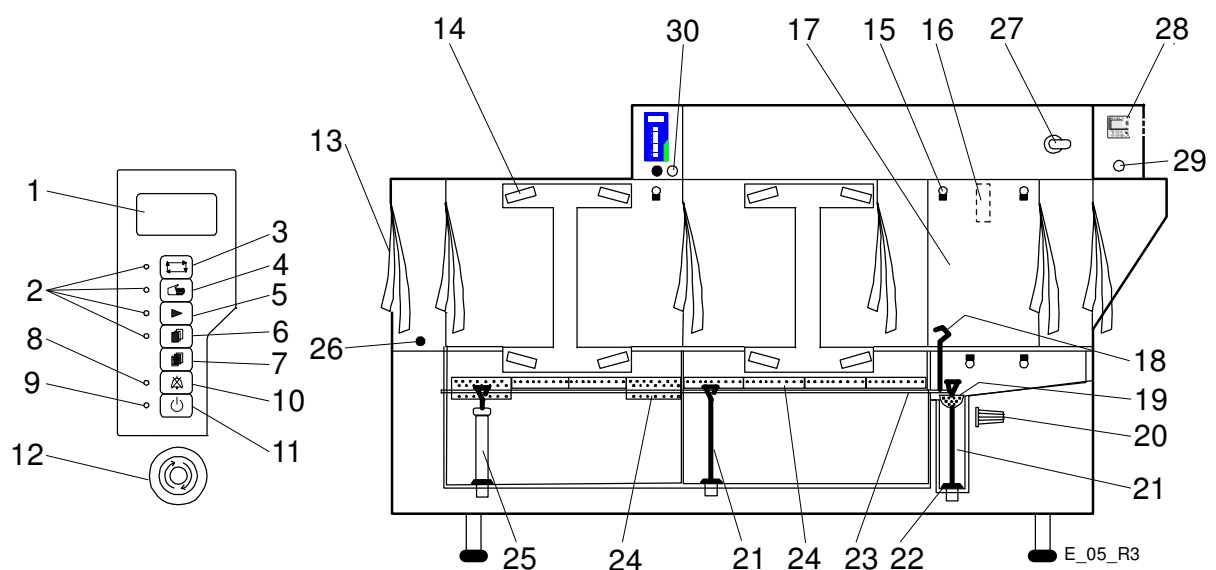
The use of the machine is dependent on how the machine is equipped.



If the machine will not be used for a longer period, the power to the machine should be turned off using the power switch, the water supply turned off and machine should be left open.

4.1 Before washing

4.1.1 Machine design



Operating instructions

1. Display
2. LEDs which indicate that functions are enabled
3. Button for automatic operation
4. Button for manual operation
5. Button for the feed
6. Button for the diagnostics function.
7. Button for diagnostic messages
8. LED for indication of alerts. If the LED flashes, the alert can be reset by pressing button (10).
9. LED which lights when the power is switched on
10. Button for resetting alert
11. On/Off
12. Emergency stop
13. Curtains
14. Wash arms
15. Wash nozzle
16. Catch
17. Door
18. Lever for emptying the tanks
19. Filter for the final rinse
20. Filter
21. Outlet seal
22. Rubber sleeve
23. Lifting arm for level pipe and outlet seals
24. Strainers
25. Level pipe
26. Photocell
27. Main switch
28. Timer for a timed start of the machine (option)
29. Button for activating rinse cleaning (option) (position when the machine is also equipped with TimerStart)
30. Button for activating rinse cleaning functions (option)

In the following chapter, figures are given in brackets to clarify what needs to be done. These numbers refer to image and list above.

Operating instructions

4.1.2 Preparations before filling

Check:

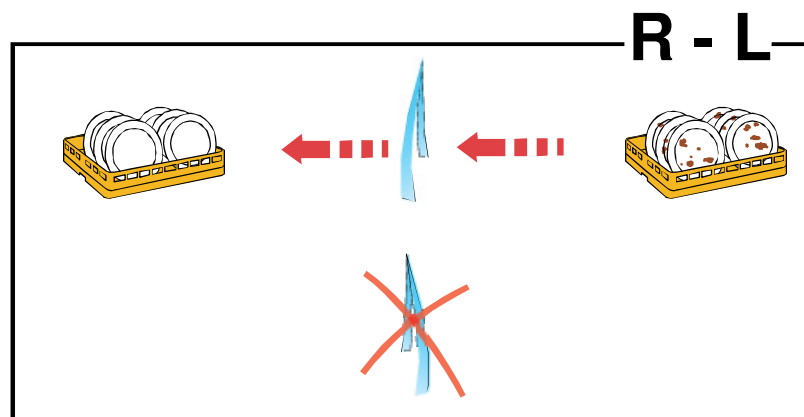
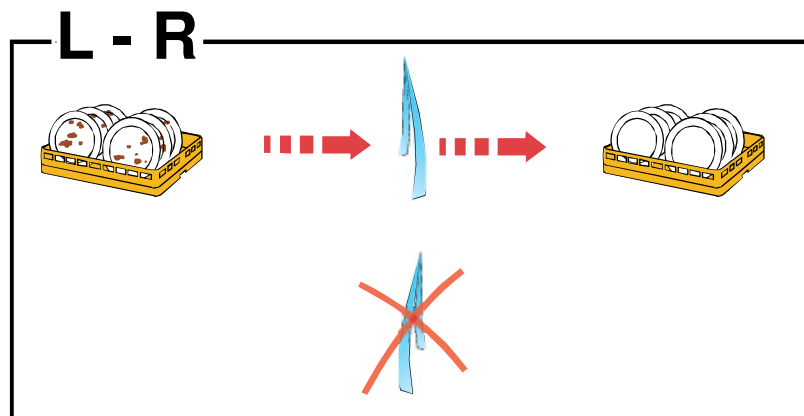


- that the machine and removable parts have been cleaned. If not – clean them!
- that the power switch (27) is in the ON position
- that the stopcock for the water to the machine is open
- that removable parts are correctly in place
- that no dirt is in the wash arms' (14) or in the rinse pipes' (15) nozzles
- amount of detergent and drying agent (option)

Curtain placement

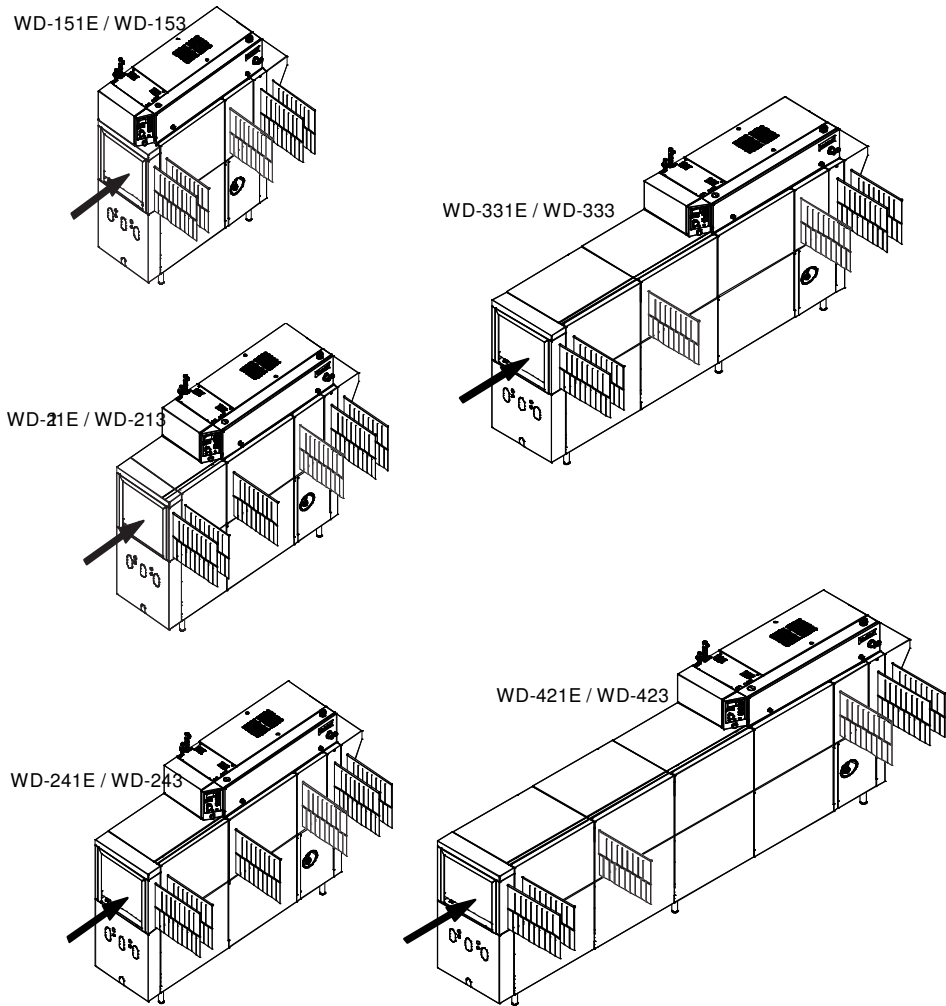


The curtains in the machine must hang in accordance the image depending on the feed direction.



The number of curtains is dependent on the size of the machine.

WD-151E	WD-211E	WD-241E	WD-331E	WD-421E
5 pcs.	6 pcs.	6 pcs.	6 pcs.	6 pcs.



The machines in the images have a left - right feed direction

Detergent and drying agent



- Ordinary washing-up liquid must not be used in the machine or for soaking. Contact your detergent supplier regarding the choice of a suitable detergent. Washing-up liquid causes a build-up of foam, produces poor wash results and can damage the machine.
- Steel wool must not be used for pre-treating the dishware.
- Only detergent and drying agent intended for industrial machines may be used.
- If using liquid detergent and drying agent, the same make and type of detergent and drying agent should be used.
- If the machine is designed for glass washing and equipped with a condensing unit, detergent intended for aluminium should be used.
- If the machine is equipped with a condensing unit, dishware should be removed from the machine as soon as the condensation cycle is complete so that re-condensation does not occur.

Operating instructions

4.1.3 Filling and heating the machine

You can see what the machine is doing on the machine's panel.

- Turn the main switch (27) to the ON position.
- Close the doors.
- Press button (11) to switch on the power supply.
- Press the button (3 or 4). The filling and heating process will begin.
- When the machine is filled and heated, it starts and runs for a while to mix the detergent.
- When the detergent is mixed, the message on the display indicates that the feed should start. Start the feed by pressing the button (5).
- The machine is now ready to wash.



NB! The time it takes for the machine to fill and heat up to the right washing temperature varies between 5 and 30 minutes and depends on the temperature of the incoming water.

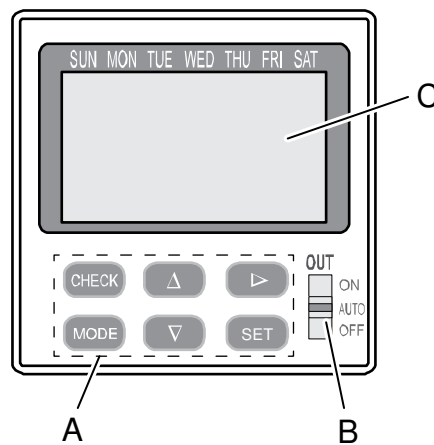
Operating instructions

4.1.4 Filing and heating the machine using TimerStart (optional)

Using the TimerStart function, the dishwasher can start filling and heating water in the washing tank automatically at a set time. The dishwasher is then ready for washing when the next wash cycle starts and you don't have to wait for the machine to fill the tanks and heat the tank water before washing can start, which takes approx. 30 minutes.

For machines equipped with the TimerStart function, the machine must be in stand-by mode in order to start automatically, i.e. the ON/OFF button (11) is pressed and the following message is shown on the machine's display (1):

TIMERSTART
ACTIVATED



90-9-05-002-a

Timer

- A=Buttons for setting and checking
- B=Switch
- C=Display

The switch (B) on the timer should be set to AUTO position.

If you want to bypass the TimerStart function and start manually, press the machine's ON/OFF button (11) once more when the message above is shown on the display. The filling and heating of the machine can then start as normal, i.e. by pressing buttons (3 or 4).

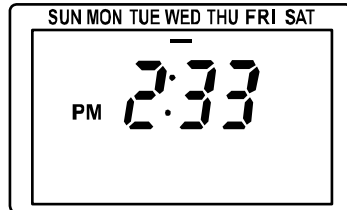


Once the wash and draining of the dishwasher has been completed, it must be switched off and set with the ON/OFF button (11) for the machine to enter stand-by mode. It is therefore not enough just to stop the wash cycle and/or to empty the washing tanks to put the machine into this mode.

Operating instructions

The display's appearance during operation (normal information)

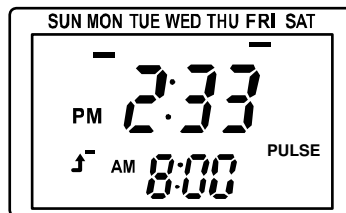
When the machine is in operation, the timer's display looks different depending on whether the start time is set or not. The display also depends on how the start time has been set.



90-9-05-003

When the start time is not set, or when the start time is set for a specific date, the display appears as above.

The actual time (12-hour clock) is shown on the display. The present day of the week is shown as a thin line under the name of the day of the week. (If start time for date is set and this date has expired, the message YEAR is shown to the right of the time).



90-9-05-004

When the machine is set to start at a certain time on certain days of the week, the display appears as above.

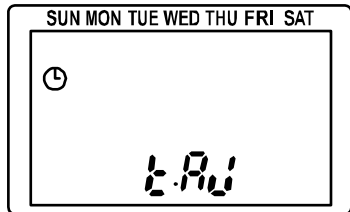
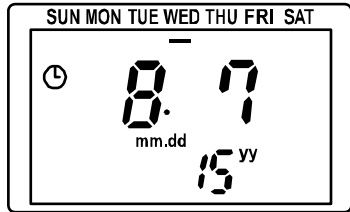
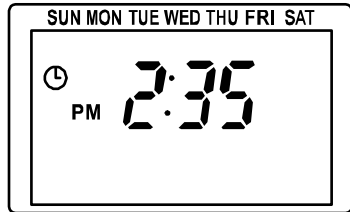
The time and day of the week are shown here in the same way as above. The next upcoming start time is shown too. The time for the next start time appears under the actual time, and day of the week for the next start time is indicated with a thicker line under the name of the day of the week.

In both cases, it is possible to see the current date by holding down the button ► for 3 seconds. The date is then shown for 3 seconds on the display before returning to its state as per the illustrations above.

Operating instructions

Setting the date and time

For the TimerStart function to work as expected, the date and timer clock must be set. This is normally done on delivery.

This is what you should do to set the time and date:	
Go into settings mode by holding down the MODE and SET buttons for 3 seconds.	
<ul style="list-style-type: none"> Press the SET button. 	 <p>The clock symbol in the upper left flashes</p>
Set the date.	
<ul style="list-style-type: none"> The value that is currently set flashes. Increase or decrease the value with the buttons ▲ and ▼. In order to move on to the next value, press the button ►. When all the values in the image, (year (yy), month (mm) and day (dd)), are set - press the SET button. 	
Set the clock. The clock has a 12-hour display so AM (before midday) and PM (after midday) must be set.	
<ul style="list-style-type: none"> The one that is currently set flashes. Increase or decrease the value with the buttons ▲ and ▼. In order to move on to the next value, press the button ►. Once the clock has been set - press the SET button. 	
Hold down the MODE button for 3 seconds in order to return to normal display information.	

Operating instructions

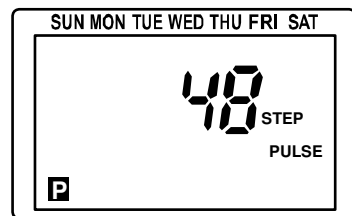
Setting the start time, days of the week

With this setting, you can set a time when the dishwasher begins to fill and heat the water in the tank, and which days of the week this start time applies to. If you want the dishwasher to start at another (additional) time, you must set it for this time too. All weekly settings are active at the same time. For example: The machine should start filling with water and heating at 8.00 on Monday to Friday inclusive and at 8.45 on Saturday and Sunday. Therefore, it is set to 8.00 for Monday, Tuesday, Wednesday, Thursday and Friday, and is set to 8.45 for Saturday and Sunday.

This is what you should do to set the start time and which days of the week it should apply to:

Access the start time settings mode by pressing the MODE button for 3 seconds.

- Press the SET button.

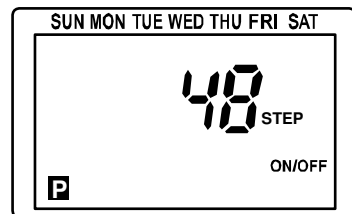


90-9-05-008

P down to the left flashes

If there are no previously stored start time settings, the points below must be followed. If start time settings are stored, the timer moves on directly to the next step (set days of the week):

- Press on either of the buttons ▲ or ▼ so that the message ON/OFF changes to PULSE.
- Press the SET button.

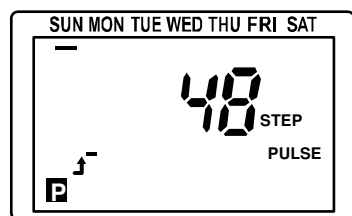


90-9-05-026

The message ON/OFF flashes

Set which days of the week the start time should apply to.

- To activate the day of the week that the pointer (the thin line under the day of the week) indicates, press either of the buttons ▲ or ▼. When a thicker line under the thin flashing line is shown, this day is activated.
- By pressing the button ►, the pointer can be moved.
- Continue to move and activate with the buttons until all the days of the week which the start time should apply to have a thicker line visible under them.
- Once the setting is complete - press the SET button.



90-9-05-009

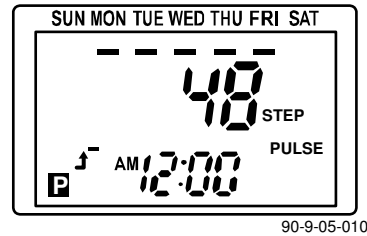
The arrow symbol and the line under the day of the week flashes

Operating instructions

This is what you should do to set the start time and which days of the week it should apply to:

Set the start time. The value that is currently set flashes.

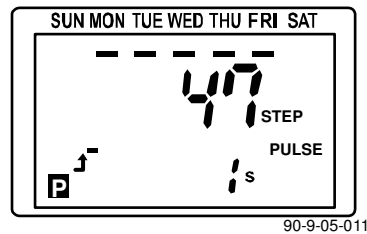
- Change the flashing value with the buttons ▲ and ▼.
- Move between the settings for the part of the day (AM / PM), hours and minutes with the button ►.
- Once the setting of all the values for the start time are complete - press SET.



The arrow symbol and adjustable value flashes

Set the pulse length.

- The pulse length should always be set to 1 second. Change the value if necessary with the buttons ▲ and ▼.
- Press SET when the setting is complete.



Press SET once more.

Hold down the MODE BUTTON for 3 seconds in order to return to normal display information.

Operating instructions

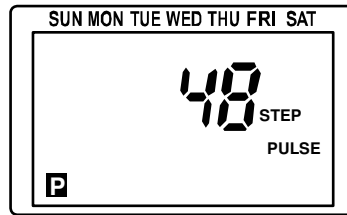
Setting the start time, date

It is possible to set the start time for specific dates, either for an individual date or for a period between a start date and an end date. It is possible to set the timer for a date up to two years from the current date.

This is what you should do to set the start time and which dates it should apply to:

Hold down the MODE button for 3 seconds in order to enter settings mode.

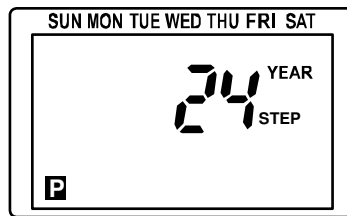
- Press MODE again.



90-9-05-008

P down to the left flashes

- Press the SET button.

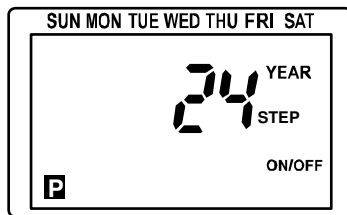


90-9-05-012

The message YEAR and P down to the left flashes

If there are no previously stored start time settings, the points below must be followed. If start time settings are stored, the timer moves on directly to the next step (set start date):

- Change with the buttons ▲ and ▼ so that PULSE is indicated instead of ON/OFF.
- Press SET.

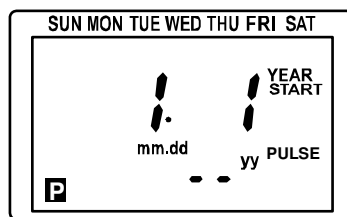


90-9-05-013

The message ON/OFF flashes

Set the start date (adjustable value flashes):

- Change the flashing value with the buttons ▲ and ▼.
- Scroll to the next value with the button ►.
- When all the values (year, month and day) are set, press SET.



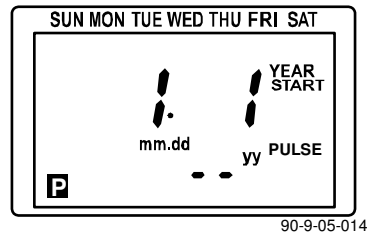
90-9-05-014

Operating instructions

This is what you should do to set the start time and which dates it should apply to:

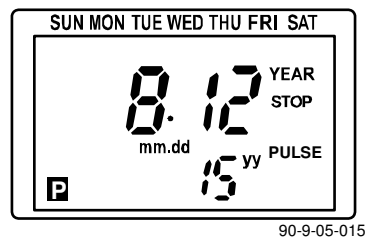
Set the stop date (adjustable value flashes):

- Change the flashing value with the buttons ▲ and ▼.
- Scroll to the next value with the help of the button ►.
- When all the values (year, month and day) are set, press SET.



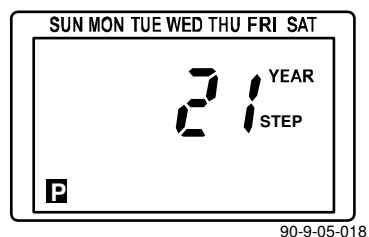
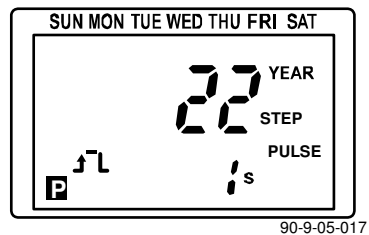
Set the start time (adjustable value flashes):

- Change the flashing value with the help of the buttons ▲ and ▼.
- Scroll to the next value with the help of the button ►.
- When all the values (before midday (AM)/after midday (PM), hours and minutes) are set, press SET.



Set the pulse length:

- The pulse length should always be set to 1 second. Change with the help of the buttons ▲ and ▼ if necessary.
- Press SET.



Hold down the MODE button for 3 seconds in order to return to normal information mode.

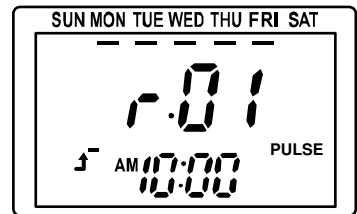
Checking, changing and removal of set start time

If the buttons have not been pressed for at least 60 seconds while in check information mode, the display returns automatically to normal display mode.

Checking of set start times, days of the week:

Hold down the CHECK button for approx. 1 second until the display changes state.

- By pressing repeatedly on CHECK, you can scroll through every set start time.
- If several start time settings are stored, they are numbered as r01, r02 and so on.
- Once you have scrolled past the last stored start time, the display returns to its normal state.

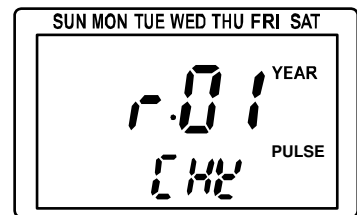


90-9-05-019

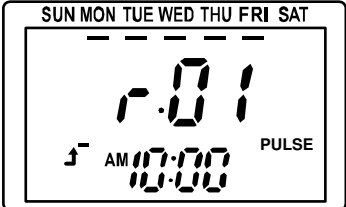
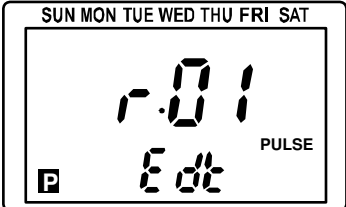
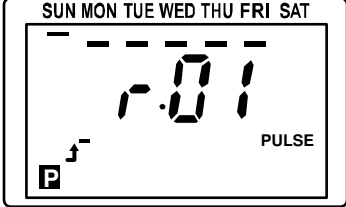
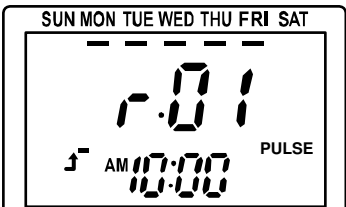
Checking of set start times, date:

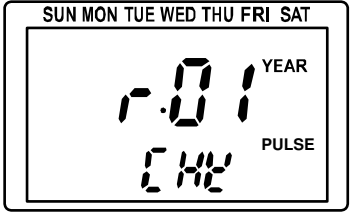
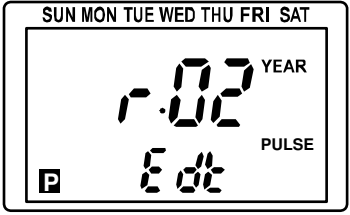
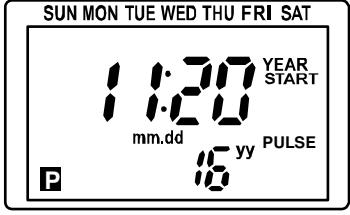
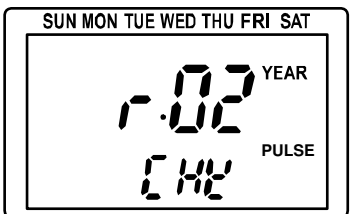
Hold down the CHECK button for approx. 3 seconds.

- By pressing repeatedly on CHECK, you can scroll through every set start time.
- If several start time settings are stored, they are numbered as r01, r02 and so on.
- Once you have scrolled past the last stored start time, the display returns to its normal state.

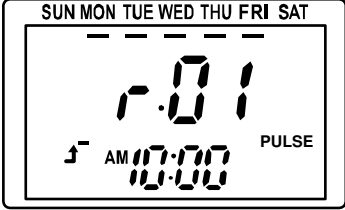
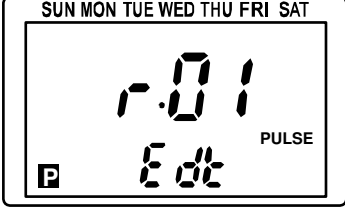


90-9-05-020

Changing set start times, days of the week:	
<p>Hold down the CHECK button for approx. 1 second.</p>	
<ul style="list-style-type: none"> • Scroll forward to the start time setting to be changed by pressing CHECK. • Hold down the SET button for approx. 3 seconds. 	 <p style="text-align: right; font-size: small;">90-9-05-019</p> <p><i>The arrow symbol flashes</i></p>
<ul style="list-style-type: none"> • Press the SET button. 	 <p style="text-align: right; font-size: small;">90-9-05-021</p> <p><i>Edt flashes</i></p>
<ul style="list-style-type: none"> • Set days of the week, start time and pulse length in the same way as described above under "Setting the start time, days of the week" • The display returns to check information mode when the SET button is pressed after the pulse length has been changed. 	 <p style="text-align: right; font-size: small;">90-9-05-022</p> <p><i>Arrow symbol and adjustable value flashes</i></p>
<ul style="list-style-type: none"> • You can choose here to scroll further to the next set start time by pressing the CHECK button or to exit the check information mode by holding down the MODE button for approx. 3 seconds (if the buttons have not been pressed for at least 60 seconds, the display returns automatically to normal display mode). 	 <p style="text-align: right; font-size: small;">90-9-05-019</p>

Changing the set start times, date:	
Hold down the CHECK button for approx. 3 seconds.	
<ul style="list-style-type: none"> • Scroll forward to the start time setting that should be changed by pressing CHECK repeatedly. • Hold down the SET button for approx. 3 seconds. 	
<ul style="list-style-type: none"> • Press the SET button. 	 <p><i>Edt flashes</i></p>
<ul style="list-style-type: none"> • Set start date, stop date, start time and pulse length in the same way as described under "Setting the start time, date" • The display returns to check information mode when the SET button is pressed after the pulse length has been changed. 	 <p><i>START and adjustable value flashes</i></p>
<ul style="list-style-type: none"> • You can choose here to scroll further to the next set start time by pressing the CHECK button or to exit the check information mode by holding down the MODE button for approx. 3 seconds (if the buttons have not been pressed for at least 60 seconds, the display returns automatically to normal display mode). 	 <p><i>r02 flashes</i></p>

Operating instructions

Removal of set start time:	
Start time, day of the week: Enter check mode by holding down the CHECK button for approx. 1 second.	
Start time, date: Enter check mode by holding down the CHECK button for approx. 3 second.	
<ul style="list-style-type: none"> Scroll forward to the start time setting to be removed by pressing the CHECK button. 	 <p style="text-align: right; font-size: small;">90-9-05-019</p>
Hold down the SET button for approx. 3 seconds.	
<ul style="list-style-type: none"> Change with the help of either of the buttons ▲ or ▼ so that Clr is indicated under the start time setting number instead of Edt. 	 <p style="text-align: right; font-size: small;">90-9-05-021</p>
Press SET.	
Hold down the SET button for 3 seconds in order to return to normal information mode.	

Operating instructions

4.2 Washing

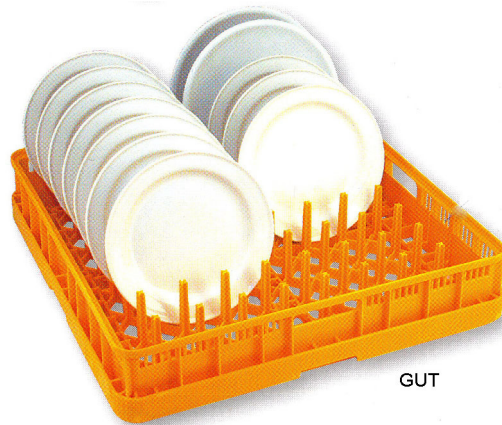


DIN 10510 is a German standard which describes how the washing process must work in rack conveyor or flight type machines in order to ensure good washing results. Amongst other things, it recommends that the contact time should be around 120 seconds for normally soiled loads. The contact time is the time which the load spends in a wash or rinse zone with washing water containing detergent. In principle this means the period from when the load enters the pre-wash zone to when it is rinsed with clean water in the final rinse zone. The standard is a useful means of comparing the capacity and consumption of different dishwashers.

4.2.1 Positioning of dishware in baskets



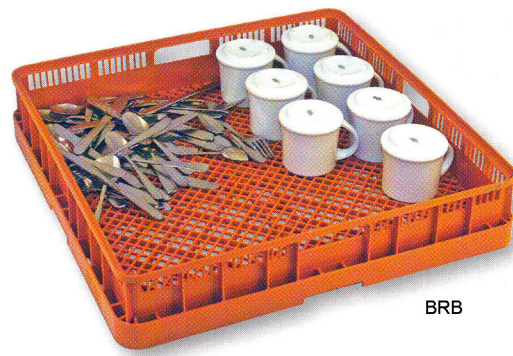
The machine is supplied with washing baskets depending on the equipment level. The washing baskets are used according to the following:



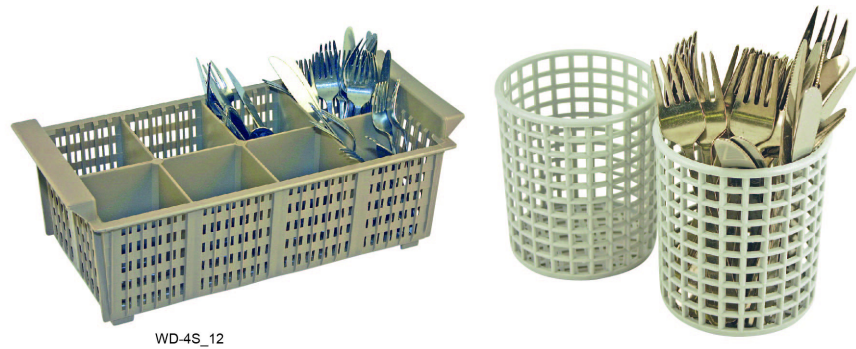
The yellow basket is used for side plates, trays, plates, etc.



The blue basket is used for glasses, cups and canteens



The brown basket is used for cutlery during the first wash



Cutlery must therefore be placed in designated baskets before the second wash, the baskets above are placed in the blue basket

Operating instructions

4.2.2 Washing



- Dried on food remnants must be soaked and larger food remnants must be removed prior to washing.
- Plates and trays must be placed longitudinally in the machine.

Feeding loads into the machine



- Push the basket carefully towards the feed opening until the feed device hooks the basket in place.
- Once the feed device begins to pull the basket into the machine, the basket must not be pushed manually. This may disturb the wash cycle, resulting in impaired wash results.

Leave the following gaps between the baskets when you feed them in:

- WD-151E = approx. 50 cm.
- WD-211E = approx. 30 cm.
- WD-241E = approx. 25 cm.
- WD-331E = Hardly any gap (the baskets should be close together).
- WD-421E = Hardly any gap (the baskets should be close together).

Increase the distance if the items to be washed are heavily soiled.

Washing with automatic operation

For automatic operation, press button (3). The corresponding LED (2) lights up.



Button for automatic operation

Washing with automatic stop. The machine starts when a basket is pushed into it. The basket stays in the washing zone until the next basket pushes it onwards. The machine stops automatically after a set period of time if no new basket is fed in.

Start the feed by pressing the button (5).

Operating instructions

Washing with manual operation

Press button (4) for manual operation. The corresponding LED (2) lights up.



Button for manual operation

Washing without automatic stop. The machine starts straight away. Manual operation is a good idea when the items are heavily soiled. If you only feed in one basket, it stops and stays in the washing zone. The time in the zone is decided by the operator. The basket is pushed out of the machine when a new basket is fed in.

Start the feed by pressing the button (5).

Checking the wash result



The dishware should be checked after each wash for:

PROBLEMS	CAUSES & MEASURES
Starch spots	<ul style="list-style-type: none"> • Scraping: Important to remove as much food particles as possible before washing. This also means that the water in the machine does not need to be changed as often. Scrape better. • Detergent and drying agent dosage: If using liquid detergent and drying agent, the same make and type should be used. The dosing affects both detergent and drying results of the dishware. The hardness level of the water affects the consumption of detergent. Contact your detergent supplier. • Temperatures: At incorrect temperatures the dishes will not be clean. Contact a service technician if you need to change the set values. • Programme selection: Programme with too short a washing time selected. Choose a programme with a longer washing time. • Cleaning the machine: Insufficient cleaning of the machine affects the results of the washing. Ensure better cleaning of the machine. • Placing dishes in baskets: Incorrectly placed items can mean that the washing water does not reach the items during washing and rinsing. • Soaking: Items with hard dried food. Soak the dishes in water. Do NOT use washing-up liquid.
Misting	
Protein residues	
Detergent residues	

Guaranteed final rinse

The temperature of the final rinse water is always correct and the right amount of rinse water is always used.

If the rinse temperature is too low, an alert is triggered on the control panel. The machine continues washing until the right temperature is reached. However, the alert can be reset in the meantime by pressing button (10) on the panel. The wash programme continues, but the machine will then rinse at a lower temperature. However, an alert is displayed.

If the flow during the final rinse is too low, an alert is displayed on the control panel. The alert can also be set up to stop the machine. The factory setting is for an alert only. If you need an alert which stops the machine, the setting must be changed by a service engineer in the machine's software.

Emergency stop function

The machine has an emergency stop button (12). If the machine has been stopped during operation using the emergency stop button, the button must be reset by turning it in the direction of the arrows. Then press the button (5) to restart the feed.

Changing the water



To achieve the best possible washing results, it is important that the water is changed frequently. However, always change the water in the event of foam problems in the tank.

- Switch the machine off by pressing button (11).
- Remove the filters (24) and drain the tanks by pulling the lever (18).
- When the tanks have been drained, close the level pipes and the outlet seals using the lever (18).
- Replace the filters.
- Refill the machine. See "Filling and heating the machine".

Operating instructions

4.3 After use

HACCP

HACCP is a preventive inspection system to ensure hygiene requirements are met during the washing process and cleaning of the machine. As a result of its design, the machine meets strict hygiene requirements. Regular, thorough cleaning is also important from a hygiene perspective. A machine that is properly cleaned helps produce a good wash result, reduces the risk of dirt accumulating, increases the service life of the machine and reduces the risk of emergency shut-down.



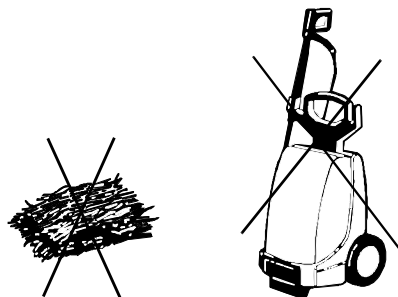
- Make sure the power supply to the machine is disconnected and that the incoming water is turned off during cleaning.
- All internal cleaning can and should take place from the front side of the machine to avoid the risk of crushing injuries beside the feed cradle.
- If any items become trapped in the feed cradle, these can be released using a 13mm double-ended spanner to turn the feed crank clockwise.

4.3.1 Incorrect cleaning methods



NB! An incorrect cleaning method may damage the machine. The following points must be observed:

- Do NOT use steel wool as it will cause corrosion to form on the machine.
- If detergent is used, it must not contain abrasives. Detergents containing abrasives will damage the stainless steel panels.
- The exterior of the machine must not be hosed. Water can enter the machine and damage the control panel and electrical equipment.
- Pressure washers and steam can damage the machine and must NOT be used for cleaning purposes. Never use a pressure washer to clean the floor within 1 metre of the machine. The supplier cannot be held liable for any faults caused by the use of pressure washers on the machine and any such use may invalidate the warranty. There is a risk of splashing even if the floor is hosed down.



WD9_07

Steel wool and pressure washers must not be used for cleaning

Operating instructions

4.3.2 Emptying

- Unhook the curtains (13) at the infeed end and wash them in a basket.
- Switch the machine off by pressing button (11).
- Empty the tanks by pulling the lever (18).

4.3.3 Daily cleaning

Cleaning the inside

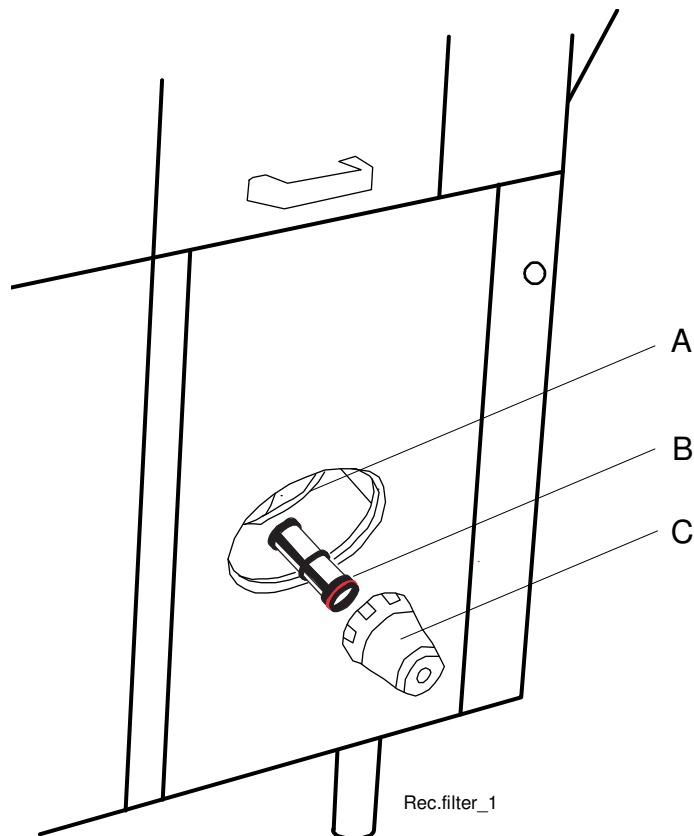
- Clean the filters (24), all the curtains (13), the level pipe (25), the outlet seals (21) and the rinse nozzles (15). Never leave the curtains, level pipes and outlet seals so that the rubber sleeve rests on a surface. The sleeve can become deformed leading to the risk of water leakage in the tanks.
- Clean the washer arm nozzles (14).
- Clean the doors (17). Wipe the rubber strips on the doors which are fitted at the top of the back of the doors.
- Rinse all the inside surfaces of the machine and clean the tanks. Use our Cleaning Gun (WD240.9009) for best results
- Finally, clean the filter (19).
- Empty the final rinse tank and clean the filter (20). The filter is placed behind the lower cover plate at the outfeed end.
- Refit the components.
- Leave the doors open.

Operating instructions

Cleaning the filter

The final rinse tank (20) must be empty when cleaning the filter. The tank must be emptied in connection with daily cleaning.

- Unscrew the cover (C) and remove the filter (B). Rinse the filter and cover.
- When refitting, it is important to fit the filter correctly to ensure that it is not damaged and that no leakage occurs.
- First fit the filter (B) in the filter housing (A) then ensure that it is sitting straight.
- Fit the cover (C), (does not need to be screwed tight).



Removing/fitting the filter

A=Filter housing

B=Filter

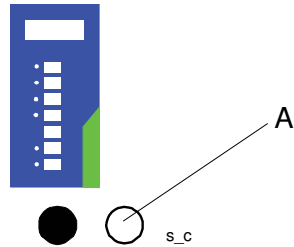
C=Cover

Externally

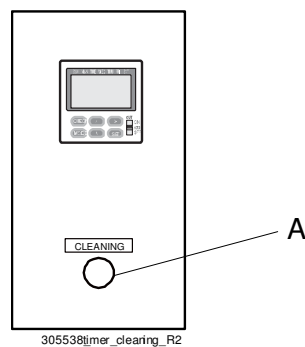
Wipe the outside of the machine with a soft, damp cloth.

Machines with rinse cleaning functions (option)

The machine may be fitted with a rinse cleaning function for the washing zones, condensing battery, washing zones and condensing battery.



Button for rinse cleaning functions



Button for rinse cleaning functions, button position when the machine is also equipped with TimerStart.

Automatic rinse cleaning function for washing zones

On activation of self-cleaning, the button (A) lights up and shines with a white light.

The machine rinses clean doors and tanks internally for a preset time (3 minutes).

When rinsing is complete, the button (A) goes out.

Automatic rinse cleaning function for condensing battery

On activation of self-cleaning, the button (A) lights up and shines with a white light.

The machine rinses the condensing battery for a preset time (12 seconds).

When rinsing is complete, the button (A) goes out.

Automatic self-cleaning of the condensing battery and washing zones

On activation of self-cleaning, the button (A) lights up and shines with a white light.

The machine rinses the condensing battery first for a preset time (12 seconds), then doors and tanks are rinsed internally for a preset time (3 minutes).

When rinsing is complete, the button (A) goes out.

Operating instructions

4.3.4 Cleaning and checking each week or as required

Weekly cleaning should be more thorough than daily cleaning. In addition to the daily cleaning measures, clean the machine as per these instructions:

- Clean the washer arms (14). Brush and rinse the washer arms using the Cleaning brush (WD721.0301) and clean the nozzles.
- Check and clean the rinse nozzles (15).
- Remove and clean the doors (17). Open the door, depress the catch (16) and lift the door vertically.
- Refit all cleaned components.
- Decalcify the machine when necessary.



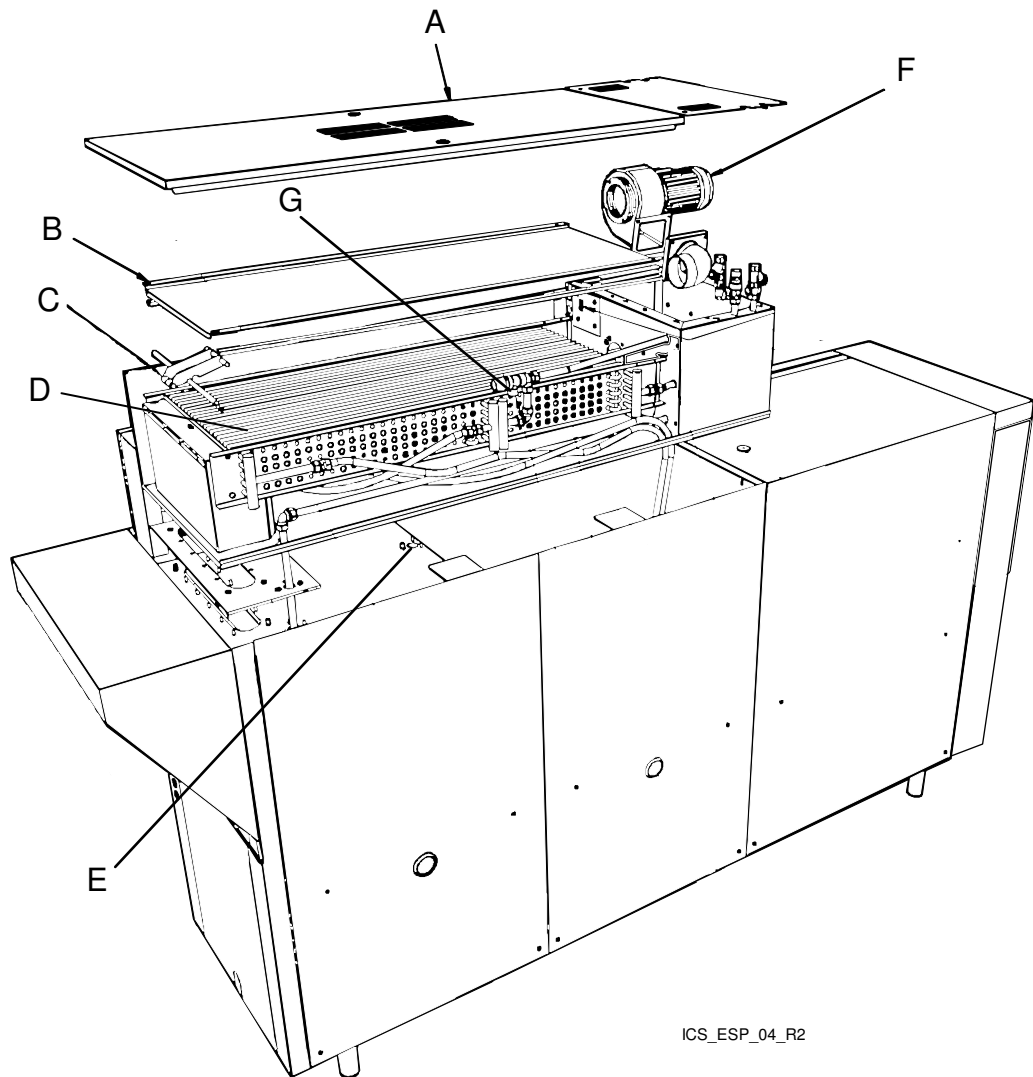
Cleaning brush WD721.0301

The door springs may be cleaned as required by rinsing these from the side. Use our Cleaning Gun (WD240.9009) for best results. The springs must NOT be removed! The door in front of the spring being cleaned must be closed.



4.3.5 Cleaning in the event of an alert or 1 time / year

The machine's condensing battery (D) must be cleaned at least once a year or when an alert with a message about cleaning the battery appears on the control panel display.



ICS_ESP_04_R2

- A=Top panel
- B=Cover plate
- C=Lifting arm
- D=Condensing battery
- E=Drain
- F=Fan motor
- G=Safety valve

Operating instructions



NB! When cleaning the condensing battery and the base of the battery box, do not use more water than the drain (E) under the battery can remove from the machine. The battery must be cleaned with hot water at normal pressure. Do not aim the water directly at the fan motor (F) on the end piece of the battery. The electric motor may be damaged if it is rinsed with high-pressure water.

- Remove the top panel (A) on the condensing battery box.
- The safety valve (G) should be aerated/activated at least once a year.
- Remove the cover plate (B) from the condensing battery by unscrewing the wing nuts which fasten it in place. Lift up the condensing battery using the lifting arm (C) to make it easier to remove.
- Check from inside the machine that the drain (E) under the battery is not blocked.
- With the condensing battery removed, begin by cleaning the bottom plate of the battery box. Then check that the drain (E) is not blocked.
- Next, clean the condensing battery (D). Rinse between the cooling fins from above. If the condensing battery is very dirty, a cleaning product with a neutral pH which will dissolve grease can be used. Check the drain.
- Finish by washing the base of the battery box again.
- Replace the condensing battery using the lifting arm (C), attach the cover plate securely (B) using the wing nuts, before fitting the top panel (A).

Operating instructions

4.3.6 Operating problems

Error messages

Machine faults and user faults are indicated by messages on the display (1). The alerts indicated with a flashing LED (8) can be reset by pressing button (10) when the cause of the alert has been rectified. Alerts that are indicated by the fact that the LED (8) is lit but not flashing cannot be reset by the operator.

The following alerts can be addressed by the operator. For other alerts, or if an alert reset with button (10) recurs, authorised service personnel must be contacted.

ALERT MESSAGE	ACTION
(0) PLATFORM ERROR	Restart the machine.
(63) POWER SUPPLY FAILURE CHECK THE EMERGENCY SWITCH	Reset the emergency stop by turning it in the direction of the arrows. Restart the machine.
(98) HARDWARE ERROR POWER ON FUNCTION DE- FECT CALL SERVICE	Restart the machine. If the error recurs, contact an authorised service company.
(1) EMERGENCY STOP ACTI- VATED	Reset the emergency stop by turning it in the direction of the arrows. Start the feed by pressing button (5).
(100) NOMINAL VALUES RESTORED FROM UI	Reset the alert by pressing button (10). If the error recurs, contact an authorised service company.
(4) COMMUNICATION ERROR BETWEEN CPU AND I/O 1 CALL SERVICE	Restart the machine.
(5) COMMUNICATION ERROR BETWEEN CPU AND I/O 2 CALL SERVICE	Restart the machine.
(6) COMMUNICATION ERROR BETWEEN CPU AND EXTRA CARD CALL SERVICE	Restart the machine.
(7) COMMUNICATION ERROR BETWEEN CPU AND DISPLAY CARD CALL SERVICE	Restart the machine.
(14) WEAK SIGNAL FROM PHOTOCCELL WASH START CLEAN PHOTOCCELL	Clean the photocell. The alert in the display will disappear after cleaning.
(47) HACCP ALARM PUMP FUNCTIONALITY DEFECT PRESS RESET	Reset the alert by pressing button (10). If the error recurs, contact an authorised service company.

Operating instructions

ALERT MESSAGE	ACTION
(64) HACCP ALARM WRONG TEMPERATURE IN TANK PRESS RESET	Reset the alert by pressing button (10). If the error recurs, contact an authorised service company.
(67) HACCP ALARM WRONG TEMPERATURE IN BOILER PRESS RESET	Reset the alert by pressing button (10). If the error recurs, contact an authorised service company.
(72) HACCP ALARM WASHING DETERGENT FUNCTIONALITY DEFECT PRESS RESET	Check and fill with new detergent. Reset the alert by pressing button (10).
(78) HACCP ALARM FINAL RINSE DEFECT PRESS RESET	Open the tap. Clean the nozzles. Reset the alert by pressing button (10).
(29) EXTERNAL ALARM INPUT ACTIVATED	Reset the alert by pressing button (10). If the error recurs, contact an authorised service company.
(30) TIMEOUT FILLING OF TANKS PRESS RESET	Open the stopcocks. Close the level pipe and the outlet seals. Check the rubber sleeves. Reset the alert by pressing button (10).
(31) TIMEOUT HEATING TANKS AND BOILERS PRESS RESET	Reset the alert by pressing button (10). If the error recurs, contact an authorised service company.
(32) BASKET IN FINAL RINSE ZONE OR SENSOR ERROR B02 PRESS RESET	Remove the basket. Reset the alert by pressing button (10). If the error recurs, contact an authorised service company.
(33) DOOR IS OPEN CLOSE DOOR	Close the door and start the feed by pressing button (5).
(40) LOW LEVEL IN TANK 1 (PRE-RINSE TANK)	Close the level pipe. Check the rubber sleeve.
(41) LOW LEVEL IN TANK 2 (CHEM WASH TANK 1)	Close the level pipe or the outlet seal. Check the rubber sleeve.
(42) LOW LEVEL IN TANK 3 (CHEM WASH TANK 2)	Close the outlet seal. Check the rubber sleeve.
(43) LOW LEVEL IN TANK 2/3 (CHEM WASH TANK 1/2)	Close the outlet seal. Check the rubber sleeve.
(44) LOW LEVEL IN TANK 4 (CHEM WASH TANK 3)	Close the outlet seal. Check the rubber sleeve.
(45) LOW LEVEL IN FINAL RINSE TANK	Close the outlet seal. Check the rubber sleeve.

Operating instructions

ALERT MESSAGE	ACTION
(51) OVERLOAD FEEDING ACTIVATED REMOVE OBJECT RESTART FEEDING	Remove the item. Start the feed by pressing button (5).
(85) OVERLOAD FEEDING ACTIVATED PRESS RESET	Reset the alert by pressing button (10).
(52) FEEDER LIMIT SWITCH ACTIVATED RE- MOVE OBJECT FROM THE FEEDER LIMIT	Remove the basket. The feed will start automatically.
(61) LOW TEMPERATURE IN TANK 2 (CHEM WASH TANK 1)	Reset the alert by pressing button (10). If the error recurs, contact an authorised service company.
(62) LOW TEMPERATURE IN TANK 3 (CHEM WASH TANK 2)	Reset the alert by pressing button (10). If the error recurs, contact an authorised service company.
(81) LOW TEMPERATURE IN TANK 4 (CHEM WASH TANK 3)	Reset the alert by pressing button (10). If the error recurs, contact an authorised service company.
(66) LOW TEMPERATURE IN THE FINAL RINSE BOILER	Reset the alert by pressing button (10). If the error recurs, contact an authorised service company.
(71) WASHING DETER- GENT ALARM ACTIVE CHECK DETERGENT DE- VICE	Check and fill with new detergent.
(74) POWER GUARD ACTIVAT- ED PART OF EQUIPMENT IS TURNED OFF	OPTION
(77) FINAL RINSE ERROR SENSOR ERROR FLOW METER BV02	Reset the alert by pressing button (10). If the error recurs, contact an authorised service company.
(76) FINAL RINSE ERROR NO FLOW IN THE MACHINE	Check that the stopcocks on the incoming water supply are open. Reset the alert by pressing button (10). If the error recurs, contact an authorised service company.
(75) FINAL RINSE ERROR LOW FLOW IN THE MACHINE	Clean the nozzles. Reset the alert by pressing button (10). If the error recurs, contact an authorised service company.
(80) STRAINER STOPPED IN TANK 02. CLEAN FILTER AND STRAINER PRESS RESET	Clean the filters. Reset the alert by pressing button (10).
(83) TIME FOR MAINTENANCE CONTACT:	Reset the alert by pressing button (10). If the error recurs, contact an authorised service company.

Operating instructions

Troubleshooting

The following errors can be dealt with by the operator. If the problem persists, contact authorised service personnel.

PROBLEMS	CAUSE	ACTION
No indication on the control panel display when the control button is pressed.	Power switch off.	Switch on the power switch.
The machine does not fill with water.	The incoming water stopcock is closed.	Open the tap.
	The door/hood is open.	Close the door/hood.
	The rinse pipe nozzles are blocked.	Clean the wash nozzles.
The machine fills slowly.	The rinse pipe nozzles are blocked.	Clean the wash nozzles.
The machine does not start washing.	The door/hood is open.	Close the door/hood.
	Dishware is blocking the magnet in the door.	Remove the dishes in question.
Noise from the washing pump.	Low water level. Foam in the tank.	Check the level. Change the water.
The machine is not cleaning properly.	The rinse and wash nozzles are clogged with dirt.	Check and clean the nozzles.
	There is too little detergent.	Check the amount of detergent. The hose must be submerged in liquid and the filter in the hose must be clean.
	The water in the tank is too dirty.	Change the water.
	Foam forming in tank.	Check that the washing temperature is not too low and that the correct detergent is being used.
	Programme with too short a washing time selected.	Choose a wash programme with a longer washing time.
	Dirt has dried on the dishware to be washed.	Soak the dishware before washing.
	The dishware is incorrectly positioned in the baskets.	Use the correct type of washing basket and accessories to ensure that the dishware is correctly positioned.
	Detergent and drying agent of another make than usual are used.	Use the same make and type as before.
The dishware has tipped over in the baskets.	The dishware is incorrectly positioned in the baskets.	Put the dishware in the correct position.
	Light dishware need washing.	Use a net grid to hold the items.
Dishware does not dry.	The rinse nozzles are blocked.	Check and clean the nozzles.
	Too little rinsing agent.	Check the amount of rinsing agent. The hose must be submerged in liquid and the filter in the hose must be clean.
	The washed items have been left in the machine.	Remove the washed items once the programme has ended.

Operating instructions

When you contact service personnel, you will need to provide the following information:

- Machine type and model.
- Machine serial number and date when the machine was installed.
- A brief description of the problem. Are any fault codes shown in the display?
- What happened/was being done immediately before the fault occurred?

Technical information

5. Technical information

The manufacturer reserves the right to make changes to the technical data.

TECHNICAL DATA	
Pump motor, pre-wash (kW), WD-211E - WD-421E	1.5
Pump motor, chemical wash 1 (kW)	1.5
Pump motor, chemical wash 2 (kW), WD-331E - WD-421E	1.5
Pump motor, chemical wash 3 (kW), WD-421E	1.5
Pump motor, recirculating rinse (kW)	0.11
Heat recovery fan (kW)	0.12
Drive motor (kW)	0.12
Booster heater 1 (kW), WD-151E	9 *
Booster heater 1 (kW), WD-211E - WD-421E	12 *
Booster heater 2 (kW), WD-151E	9
Booster heater 2 (kW), WD-211E - WD-421E	12
Tank heater, chemical wash 1 (kW), WD151E - WD-241E	12
Tank heater, chemical wash 1 (kW), WD331E- WD-421E	9
Tank heater, chemical wash 2 (kW), WD331E- WD-421E	9
Tank heater, chemical wash 3 (kW), WD-421E	9
Heat recovery, cooling surface (m ²)	25
Heat recovery fan, flow (m ³ /hour)	100
Tank volume, pre-wash (litres), WD-211E	51
Pump motor, pre-wash (litres), WD-241E - WD-421E	77
Tank volume, chemical wash tank 1 (litres)	100
Tank volume, chemical wash tank 2 (litres), WD-331E- WD-421E	100
Tank volume, chemical wash tank 3 (litres), WD-421E	100
Tank volume, final rinse tank (litres)	6
Weight, machine in operation (kg), WD-151E	490
Weight, machine in operation (kg), WD-211E	625
Weight, machine in operation (kg), WD-241E	655
Weight, machine in operation (kg), WD-331E	900
Weight, machine in operation (kg), WD-421E	1020
Enclosure protection class (IP)	55

* Adjust where necessary. Affects the capacity and connected power.

Technical information

CAPACITY AND OPERATING DATA	
Normal wash capacity (baskets/hour) *, WD-151E	70-150
Normal wash capacity (baskets/hour) *, WD-211E	100-200
Normal wash capacity (baskets/hour) *, WD-241E	110-210
Normal wash capacity (baskets/hour) *, WD-331E	150-230
Normal wash capacity (baskets/hour) *, WD-421E	150-230
Capacity in accordance with DIN 10510 (baskets/hour), WD-151E	80
Capacity in accordance with DIN 10510 (baskets/hour), WD-211E	120
Capacity in accordance with DIN 10510 (baskets/hour), WD-241E	140
Capacity in accordance with DIN 10510 (baskets/hour), WD-331E	190
Capacity in accordance with DIN 10510 (baskets/hour), WD-421E	245
Cold water consumption, normal final rinse (litres/basket)	1.8
Steam consumption **, (kg/hour), WD-151E	50
Steam consumption **, (kg/hour), WD-211E - WD-241E	60
Steam consumption **, (kg/hour), WD-331E	70
Steam consumption **, (kg/hour), WD-421E	75
Surface temperature at a room temperature of 20 °C (°C)	35
Sound pressure level, L _{PA} (dBA) ***	69
Sound power level L _{WA} (dBA) ***	83

* Maximum capacity 240 baskets/hour.

** When the machine is steam-heated

*** in accordance with EN 60 335-2-58, §ZAA.2.8 with instruments that satisfy class 1.

Measurements of the sound pressure level on site are performed in three places 20cm from the edges of the front at a height of 1.55m using a microphone.

When measuring sound power level, create an imaginary measurement area consisting of five sides at a distance of 1 m from all edges of the machine.

CONNECTION, ELECTRICALLY HEATED MACHINE	
Total connected power (kW), WD-151E	32.6
Total connected power (kW), WD-211E - WD-241E	40.1
Total connected power (kW), WD-331E	47.6
Total connected power (kW), WD-421E	58.1
Main fuse 400V 3N~ (A) *, WD-151E	50
Main fuse 400V 3N~ (A) *, WD-211E - WD-241E	63
Main fuse 400V 3N~ (A) *, WD-331E	80
Main fuse 400V 3N~ (A) *, WD-421E	100
Max. connection area 400 V 3N~ (L1-L3, N, PE) Cu (mm ²)	35

* Other voltages on request.

Technical information

CONNECTION, STEAM-HEATED MACHINE 150-250 kPa *	
Total connected power (kW), WD-151E	1.8
Total connected power (kW), WD-211E - WD-241E	3.4
Total connected power (kW), WD-331E	4.8
Total connected power (kW), WD-421E	6.0
Main fuse 400V 3N~ (A) **, WD-151E	16
Main fuse 400V 3N~ (A) **, WD-211E - WD-421E	20
Max. connection area 400 V 3N~ (L1-L3, N, PE) Cu (mm ²)	25
Steam (internal thread), WD-151E - WD-241E	R $\frac{3}{4}$ "
Steam (internal thread), WD-331E - WD-421E	R1"
Condensing water (internal thread)	R $\frac{1}{2}$ "

* Other pressures available on request.

** Other voltages on request.

WATER, DRAIN AND VENTILATION CONNECTIONS	
Water quality, hardness (°dH)	2-7
Hot water connection 50-65 °C (internal thread)	R $\frac{1}{2}$ "
Cold water connection 5-12 °C (internal thread)	R $\frac{1}{2}$ "
Drain connection, PP pipe (ø mm)	50
Water capacity, pressure (kPa)	250-600
Water capacity, flow (litres/minute)	11
Floor drain, capacity (litres/second)	3
Heat load room, latent / sensitive / total (kW), WD-151E	3.0 / 4.5 / 7.5
Heat load room, latent / sensitive / total (kW), WD-211E - WD-241E	3.7 / 5.3 / 9.0
Heat load room, latent / sensitive / total (kW), WD-331E	4.5 / 6.5 / 11.0
Heat load room, latent / sensitive / total (kW), WD-421E	5.3 / 7.7 / 13.0

SIZE AND WEIGHT FOR TRANSPORT, STANDARD MACHINE *	
Size ** (LxWxH (m)), WD-151E	2.1x0.8x2.0
Size ** (LxWxH (m)), WD-211E	2.7x0.8x2.0
Size ** (LxWxH (m)), WD-241E	3.0x0.8x2.0
Size ** (LxWxH (m)), WD-331E	3.9x0.8x2.0
Size ** (LxWxH (m)), WD-421E	4.8x0.8x2.0
Weight ** (kg), WD-151E	400
Weight ** (kg), WD-211E	510
Weight ** (kg), WD-241E	550
Weight ** (kg), WD-331E	680
Weight ** (kg), WD-421E	790

* Normal delivery fully assembled. If necessary, delivered in smaller components.

** Including packaging.