

Technical data sheet for

## ELECTRIC CHARGRILL 600mm

CH8600ED-B, CH8600ED-LS, CH8600ED-CB



CH8600ED-LS

- Heavy-duty electric chargrill
- Direct contact cooking elements
- Fast response heating
- Up to 400°C cooking temperature
- No cooking grates required
- 8.4kW heating elements
- Water filled cooking well with drain
- Improves performance / avoids fat fires / eases cleaning
- Manual water fill
- Drain collection pan
- 2 models of base unit
- Stainless steel exterior
- Easy clean
- Easy service
- Fully modular
- Low back models (CHL) available

### Series Options

- CH - Standard splashback models
- CHL - Low back models
- CHB - Bold vitreous enamel colour front finish on standard splashback models
- CHLB - Bold vitreous enamel colour front finish on low back models

### Overall Construction

#### CHARGRILL

- Welded hob with 2.0mm 304 stainless steel bull nose
- Cooking well in 304 stainless steel
- Splashback and side panels 1.2mm 304 stainless steel
- Stainless steel splash guards sides and rear
- Front panels 0.9mm 304 stainless steel
- Stainless steel Drain Collection Pan

#### BENCH MOUNT (supplied as – B model)

- Four 63mm dia. heavy-duty 1.2mm 304 stainless steel bench legs with adjustable feet
- Adjustable height 80mm – 105mm

#### LEG STAND (supplied as – LS model)

- Fully modular for matched suite finish
- Framed top for connection to Chargrill
- 63mm dia. heavy-duty 1.2mm 304 stainless steel legs with adjustable feet
- Fully modular framed stand shelf with 0.9mm 304 stainless steel finish
- Quick assembly design (no tools required)

#### CABINET BASE (supplied as – CB model)

- Fully modular for match suite finish
- Double skin 0.9mm 304 stainless steel interior and exterior
- Optional GN 1/1 4 position racking kit
- 63mm dia. heavy-duty 1.2mm 304 stainless steel legs with adjustable feet

### Controls

- Separate left and right heat zone controls
- Element hinge switch for heating element cut-out when elements hinged up
- Large easy use control knob - heat resistant reinforced
- Easy view control settings on knob
- Indicator lights for power heating

### Cleaning and Servicing

- All models with easy clean stainless steel external finish
- Removable splash guards
- Hinge up elements with safety support stay
- Element cleaning tool
- Cooking well with drain for wash out cleaning
- Slide out drain collection pan
- Control service through front of unit

# Technical data sheet for ELECTRIC CHARGRILL 600mm

CH8600ED-B, CH8600ED-LS, CH8600ED-CB

## Specifications

### ELEMENTS

5 direct contact heating elements

### Cooking area

450mm x 590mm, 2655cm<sup>2</sup>

### Electrical requirements

8.4kW  
400-415Vac, 50/60Hz, 3P+N+E  
L1 11A  
L2 11A  
L3 15A

### Electrical connection

130mm from LH side, 30mm from rear,  
and 635mm from floor

### DIMENSIONS

#### Bench model

Width 600mm  
Depth 805mm  
Height 355mm  
Incl. splashback 570mm  
Incl. low back 410mm

#### All models (excluding Bench model)

Width 600mm  
Depth 805mm  
Height 915mm  
Incl. splashback 1130mm  
Incl. low back 970mm

### NETT WEIGHT

Bench and Leg Stand models  
68kg  
Cabinet Base models  
70kg

### PACKING DATA

#### Bench and Leg Stand models

0.37m<sup>3</sup>, 99kg  
Width 645mm  
Depth 870mm  
Height 855mm

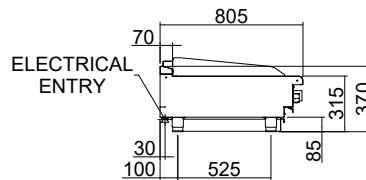
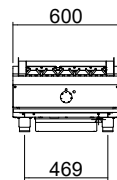
#### Cabinet Base models

0.70m<sup>3</sup>, 127kg  
Width 645mm  
Depth 870mm  
Height 1255mm

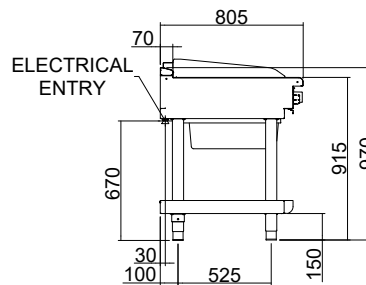
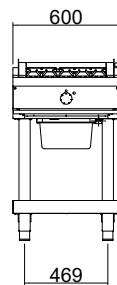
### OPTIONS AT EXTRA COST

Castors  
Plinth mounting

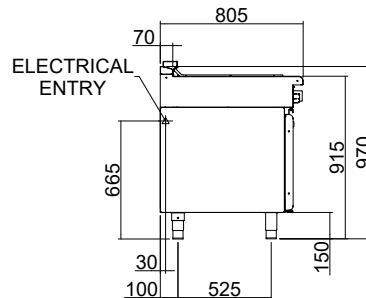
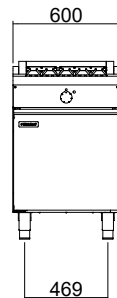
CH8600ED-B



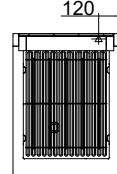
CH8600ED-LS



CH8600ED-CB



CH8600ED



[moffat.com.au](http://moffat.com.au)  
[moffat.co.nz](http://moffat.co.nz)

Australia  
[moffat.com.au](http://moffat.com.au)

### Moffat Pty Limited

Victoria/Tasmania  
740 Springvale Road  
Mulgrave, Victoria 3170  
Telephone +613-9518 3888  
Facsimile +613-9518 3833  
[vsales@moffat.com.au](mailto:vsales@moffat.com.au)

New South Wales  
Telephone +612-8833 4111  
[nswsales@moffat.com.au](mailto:nswsales@moffat.com.au)

South Australia  
Telephone +613-9518 3888  
[vsales@moffat.com.au](mailto:vsales@moffat.com.au)

Queensland  
Telephone +617-3630 8600  
[qldsales@moffat.com.au](mailto:qldsales@moffat.com.au)

Western Australia  
Telephone +618-9413 2400  
[wasales@moffat.com.au](mailto:wasales@moffat.com.au)

### New Zealand

[moffat.co.nz](http://moffat.co.nz)

### Moffat Limited

Rolleston  
45 Illinois Drive  
Izone Business Hub  
Rolleston 7675  
Telephone +64 3-983 6600  
Facsimile +64 3-983 6660  
[sales@moffat.co.nz](mailto:sales@moffat.co.nz)

Auckland  
Telephone +64 9-574 3150  
[sales@moffat.co.nz](mailto:sales@moffat.co.nz)



In line with policy to continually develop and improve its products, Moffat Limited reserves the right to change specifications and design without notice.

© Copyright Moffat Ltd  
AN.W8.01/24