



# ELECTRIC CHARGRILL 600mm

E594D-B, E594D-LS, E594D-CB

- Heavy-duty electric chargrill
- Direct contact cooking elements
- Fast response heat control
- Up to 400°C cooking temperature
- No cooking grates required
- 8.4kW heating power
- Water filled cooking well with drain
- Improves performance / avoids fat fires / eases cleaning
- Manual water fill
- Drain collection pan
- 2 models of base unit
- Rear rollers
- Stainless steel exterior
- Easy clean
- Easy service
- Fully modular



E594D-LS

## Overall Construction

### Chargrill

- Welded hob with 1.5mm 304 stainless steel top
- Cooking well in 304 stainless steel
- Side panels 1.2mm stainless steel
- Splashback 1.2mm stainless steel
- Stainless steel splash guards sides and rear
- Vitreous enamelled control panel
- Stainless steel Drain Collection Pan

### Bench mount (supplied as - B model)

- Four 63mm dia. heavy-duty 1.2mm 304 stainless steel bench legs with adjustable feet
- Adjustable height 80mm - 105mm

### Leg stand (supplied as - LS model)

- Fully modular for matched suite finish
- Framed top for connection to Chargrill
- 63mm dia. heavy-duty 1.2mm stainless steel legs with two adjustable feet at front and two rollers at rear
- Fully modular framed stand shelf with 0.9mm stainless steel finish
- Quick assembly design

### Cabinet base (supplied as - CB model)

- Fully modular for match suite finish
- Double skin 0.9mm stainless steel interior and exterior
- 63mm dia. heavy-duty 1.2mm stainless steel legs with two adjustable feet at front and two rollers at rear
- Optional GN 1/1 4 position racking kit

## Controls

- Single heat zone control
- Element hinge switch for heating element cut-out when elements hinged up
- Large easy use control knob - heat resistant reinforced
- Easy view control settings on knob
- Indicator light for power heating

## Cleaning and Servicing

- All models with easy clean stainless steel external finish
- Removable splash guards
- Hinge up elements with safety support stay
- Element cleaning tool
- Cooking well with drain for wash out cleaning
- Slide out drain collection pan
- Control service through front of unit

# ELECTRIC CHARGRILL 600mm

E594D-B, E594D-LS, E594D-CB

## Specifications

### Elements

5 direct contact heating elements

### Cooking area

450mm x 590mm, 2655cm<sup>2</sup>

### Electrical requirements

8.4kW

400-415Vac, 50/60Hz, 3P+N+E

L1 11A

L2 11A

L3 15A

### Electrical connection

130mm from LH side, 30mm from rear,  
635mm from floor

### Dimensions

#### Bench model

Width 600mm

Depth 812mm

Height 315mm

Incl. splashback option 485mm

#### All models (excluding Bench model)

Width 600mm

Depth 812mm

Height 915mm

Incl. splashback option 1085mm

### Nett weight

#### Bench and Leg Stand models

68kg

#### Cabinet Base models

70kg

### Packing data

#### Bench and Leg Stand models

0.37m<sup>3</sup>, 99kg

Width 645mm

Depth 870mm

Height 665mm

#### Cabinet Base models

0.70m<sup>3</sup>, 127kg

Width 645mm

Depth 870mm

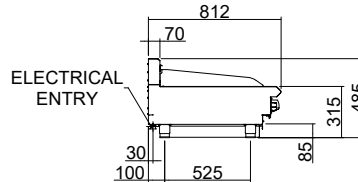
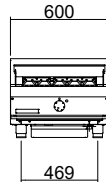
Height 1255mm

### Options

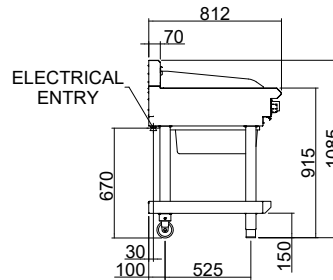
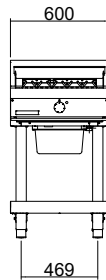
Adjustable feet at rear

Castors

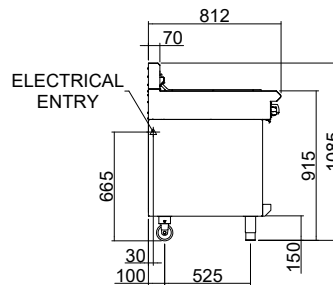
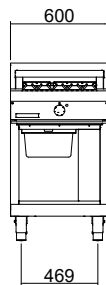
E594D-B



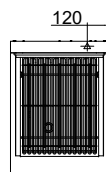
E594D-LS



E594D-CB



E594D



[moffat.com.au](http://moffat.com.au)

[moffat.co.nz](http://moffat.co.nz)

Australia

[moffat.com.au](http://moffat.com.au)

Moffat Pty Limited

Victoria/Tasmania  
740 Springvale Road  
Mulgrave, Victoria 3170  
Telephone +613-9518 3888  
Facsimile +613-9518 3833  
[vsales@moffat.com.au](mailto:vsales@moffat.com.au)

New South Wales  
Telephone +612-8833 4111  
[nswsales@moffat.com.au](mailto:nswsales@moffat.com.au)

South Australia  
Telephone +613-9518 3888  
[vsales@moffat.com.au](mailto:vsales@moffat.com.au)

Queensland  
Telephone +617-3630 8600  
[qldsales@moffat.com.au](mailto:qldsales@moffat.com.au)

Western Australia  
Telephone +618-9413 2400  
[wasales@moffat.com.au](mailto:wasales@moffat.com.au)

New Zealand

[moffat.co.nz](http://moffat.co.nz)

Moffat Limited

Rolleston  
45 Illinois Drive  
Izone Business Hub  
Rolleston 7675  
Telephone +64 3-983 6600  
Facsimile +64 3-983 6660  
[sales@moffat.co.nz](mailto:sales@moffat.co.nz)

Auckland  
Telephone +64 9-574 3150  
[sales@moffat.co.nz](mailto:sales@moffat.co.nz)



In line with policy to continually develop and improve its products, Moffat Limited reserves the right to change specifications and design without notice.

© Copyright Moffat Ltd  
AN.BSE.01.24

an Ali Group Company



The Spirit of Excellence