



# SINGLE PAN ELECTRIC FRYER 600mm

E60E

- 22kW high performance single pan fryer
- Easy clean flat bar heating elements
- Digital display temperature control with 3 product timers
- Easy clean stainless steel open pan with 10 year limited warranty
- 35L oil capacity
- 3 standard or 2 large basket capacity
- 32mm (1¼") drain valve
- Rear rollers
- Stainless steel exterior
- Easy service
- Fully modular



E60E

## Overall Construction

- Stainless steel pan
- Bull nose welded 1.5mm 304 stainless steel
- Splashback 1.2mm 304 stainless steel
- Side panels 1.2mm 304 stainless steel
- Double skin door with 0.9mm 304 stainless exterior
- Vitreous enamelled control panel
- Hinge out counterbalanced heating elements
- 32mm (1¼") drain valve
- 63mm dia. heavy-duty 1.2mm 304 stainless steel adjustable legs at front and two rollers at rear
- 3 standard baskets and stainless steel lid supplied standard

## Controls

- Digital display electronic thermostat
- Thermostat range 88-190°C
- 3 programmable product timers with countdown display and alarms
- Straight or compensating temperature cook time control
- Heating and basket drop displays
- Programmable melt cycles
- Fail-safe over-temperature safety cut-out
- Element tilt switch for heating cut-out on element lift
- Safety start switch

## Cleaning and Servicing

- Open stainless steel pan with hinge out elements for easy clean
- Easy clean basket support bar
- 32mm (1¼") drain valve for effective draining
- Easy clean stainless steel exterior
- Access to all controls from front of unit

# SINGLE PAN ELECTRIC FRYER 600mm

E60E

## Specifications

**Production rate**  
40kg/hr

### Pan Size

Oil capacity 35L (50lbs shortening)  
Width 515mm  
Length 390mm  
Oil frying depth 95mm

### Baskets

3 nickel plated wire baskets  
140mm W x 335mm D x 145mm H  
Optional 2 nickel plated wire baskets  
210mm W x 335mm D x 145mm H

### Elements

2 x 11kW flat bar stainless steel heating elements

### Electrical requirements

22kW, 400-415Vac, 50/60hz, 3P+N+E  
L1 30.5A  
L2 30.5A  
L3 30.5A

### Electrical connection

41mm from RH side, 70mm from rear and 485mm from floor

### Dimensions

Width 600mm  
Depth 812mm  
Height 915mm  
Incl. splashback 1085mm

### Nett weight

74kg

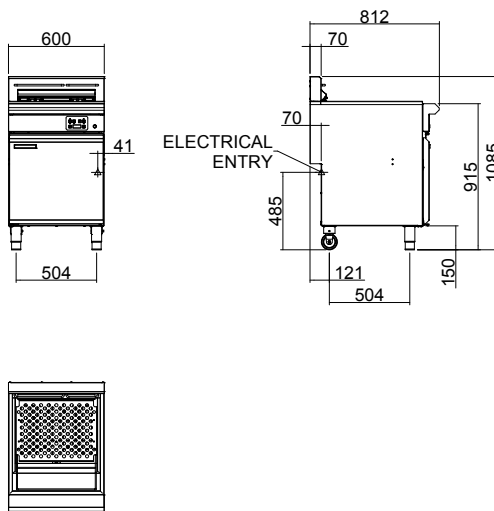
### Packing data

0.7m<sup>3</sup>, 99kg  
Width 670mm  
Depth 900mm  
Height 1255mm

### Options

Adjustable feet at rear  
Filtamax Filtration System  
Extra standard baskets  
Extra large baskets  
Side splash guards  
Joining caps  
Castors

E60E



moffat.com.au  
moffat.co.nz

Australia  
moffat.com.au

### Moffat Pty Limited

Victoria/Tasmania  
740 Springvale Road  
Mulgrave, Victoria 3170  
Telephone +613-9518 3888  
Facsimile +613-9518 3833  
vsales@moffat.com.au

New South Wales  
Telephone +612-8833 4111  
nswsales@moffat.com.au

South Australia  
Telephone +613-9518 3888  
vsales@moffat.com.au

Queensland  
Telephone +617-3630 8600  
qldsales@moffat.com.au

Western Australia  
Telephone +618-9413 2400  
wasales@moffat.com.au

### New Zealand

moffat.co.nz

### Moffat Limited

Rolleston  
45 Illinois Drive  
Izone Business Hub  
Rolleston 7675  
Telephone +64 3-983 6600  
Facsimile +64 3-983 6660  
sales@moffat.co.nz

Auckland  
Telephone +64 9-574 3150  
sales@moffat.co.nz



In line with policy to continually develop and improve its products, Moffat Limited reserves the right to change specifications and design without notice.

© Copyright Moffat Ltd  
AN.BSE.SS.01.23

an Ali Group Company



The Spirit of Excellence