



SINGLE PAN ELECTRIC FRYER 600mm

E60E

- 22kW high performance single pan fryer
- Easy clean flat bar heating elements
- Digital display temperature control with 3 product timers
- Easy clean stainless steel open pan with 10 year limited warranty
- 35L oil capacity
- 3 standard or 2 large basket capacity
- 32mm (1¼") drain valve
- Rear rollers
- Stainless steel exterior
- Easy service
- Fully modular



E60E

Overall Construction

- Stainless steel pan
- Bull nose welded 1.5mm 304 stainless steel
- Splashback 1.2mm 304 stainless steel
- Side panels 1.2mm 304 stainless steel
- Double skin door with 0.9mm 304 stainless exterior
- Vitreous enamelled control panel
- Hinge out counterbalanced heating elements
- 32mm (1¼") drain valve
- 63mm dia. heavy-duty 1.2mm 304 stainless steel adjustable legs at front and two rollers at rear
- 3 standard baskets and stainless steel lid supplied standard

Controls

- Digital display electronic thermostat
- Thermostat range 88-190°C
- 3 programmable product timers with countdown display and alarms
- Straight or compensating temperature cook time control
- Heating and basket drop displays
- Programmable melt cycles
- Fail-safe over-temperature safety cut-out
- Element tilt switch for heating cut-out on element lift
- Safety start switch

Cleaning and Servicing

- Open stainless steel pan with hinge out elements for easy clean
- Easy clean basket support bar
- 32mm (1¼") drain valve for effective draining
- Easy clean stainless steel exterior
- Access to all controls from front of unit

SINGLE PAN ELECTRIC FRYER 600mm

E60E

Specifications

Production rate
40kg/hr

Pan Size
Oil capacity 35L (50lbs shortening)
Width 515mm
Length 390mm
Oil frying depth 95mm

Baskets
3 nickel plated wire baskets
140mm W x 335mm D x 145mm H
Optional 2 nickel plated wire baskets
210mm W x 335mm D x 145mm H

Elements
2 x 11kW flat bar stainless steel
heating elements

Electrical requirements
22kW, 400-415Vac, 50/60Hz, 3P+N+E
L1 30.5A
L2 30.5A
L3 30.5A

Electrical connection
41mm from RH side, 70mm from rear
and 485mm from floor

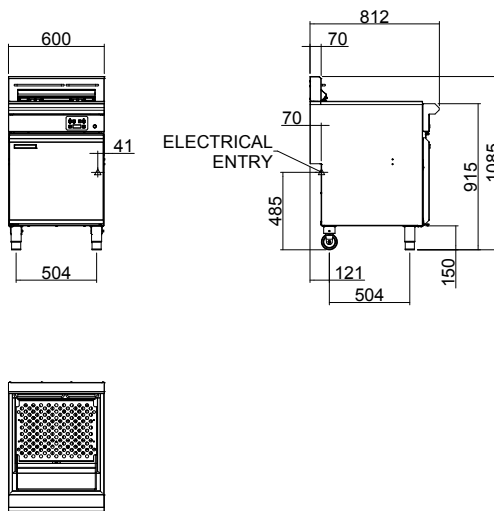
Dimensions
Width 600mm
Depth 812mm
Height 915mm
Incl. splashback 1085mm

Nett weight
74kg

Packing data
0.7m³, 99kg
Width 670mm
Depth 900mm
Height 1255mm

Options
Adjustable feet at rear
Filtamax Filtration System
Extra standard baskets
Extra large baskets
Side splash guards
Joining caps
Castors

E60E



moffat.com.au
moffat.co.nz

Australia
moffat.com.au

Moffat Pty Limited
Victoria/Tasmania
740 Springvale Road
Mulgrave, Victoria 3170
Telephone +613-9518 3888
Facsimile +613-9518 3833
vsales@moffat.com.au

New South Wales
Telephone +612-8833 4111
nswsales@moffat.com.au
South Australia
Telephone +613-9518 3888
vsales@moffat.com.au

Queensland
Telephone +617-3630 8600
qldsales@moffat.com.au

Western Australia
Telephone +618-9413 2400
wasales@moffat.com.au

New Zealand
moffat.co.nz

Moffat Limited
Rolleston
45 Illinois Drive
Izone Business Hub
Rolleston 7675
Telephone +64 3-983 6600
Facsimile +64 3-983 6660
sales@moffat.co.nz

Auckland
Telephone +64 9-574 3150
sales@moffat.co.nz



In line with policy to continually develop and improve its products, Moffat Limited reserves the right to change specifications and design without notice.

© Copyright Moffat Ltd
AN.BSE.SS.01.23

an Ali Group Company



The Spirit of Excellence