

# SINGLE PAN ELECTRIC FRYER 600mm

E60E

- 22kW high performance single pan fryer
- Easy clean flat bar heating elements
- Digital display temperature control with 3 product timers
- Easy clean stainless steel open pan with 10 year limited warranty
- 35L oil capacity
- 3 standard or 2 large basket capacity
- 32mm (1¼") drain valve
- Rear rollers
- Stainless steel exterior
- Easy service
- Fully modular



E60E

## Overall Construction

- Stainless steel pan
- Bull nose welded 1.5mm 304 stainless steel
- Splashback 1.2mm 304 stainless steel
- Side panels 1.2mm 304 stainless steel
- Double skin door with 0.9mm 304 stainless exterior
- Vitreous enamelled control panel
- Hinge out counterbalanced heating elements
- 32mm (1¼") drain valve
- 63mm dia. heavy-duty 1.2mm 304 stainless steel adjustable legs at front and two rollers at rear
- 3 standard baskets and stainless steel lid supplied standard

## Controls

- Digital display electronic thermostat
- Thermostat range 88-190°C
- 3 programmable product timers with countdown display and alarms
- Straight or compensating temperature cook time control
- Heating and basket drop displays
- Programmable melt cycles
- Fail-safe over-temperature safety cut-out
- Element tilt switch for heating cut-out on element lift
- Safety start switch

## Cleaning and Servicing

- Open stainless steel pan with hinge out elements for easy clean
- Easy clean basket support bar
- 32mm (1¼") drain valve for effective draining
- Easy clean stainless steel exterior
- Access to all controls from front of unit

# SINGLE PAN ELECTRIC FRYER 600mm

E60E

## Specifications

### Production rate

40kg/hr

### Pan Size

Oil capacity 35L (50lbs shortening)

Width 515mm

Length 390mm

Oil frying depth 95mm

### Baskets

3 nickel plated wire baskets

140mm W x 335mm D x 145mm H

Optional 2 nickel plated wire baskets

210mm W x 335mm D x 145mm H

### Elements

2 x 11kW flat bar stainless steel heating elements

### Electrical requirements

22kW, 400-415Vac, 50/60Hz, 3P+N+E

L1 30.5A

L2 30.5A

L3 30.5A

### Electrical connection

41mm from RH side, 70mm from rear and 485mm from floor

### Dimensions

Width 600mm

Depth 812mm

Height 915mm

Incl. splashback 1085mm

### Nett weight

74kg

### Packing data

0.7m<sup>3</sup>, 99kg

Width 670mm

Depth 900mm

Height 1255mm

### Options

Adjustable feet at rear

Filtamax Filtration System

Extra standard baskets

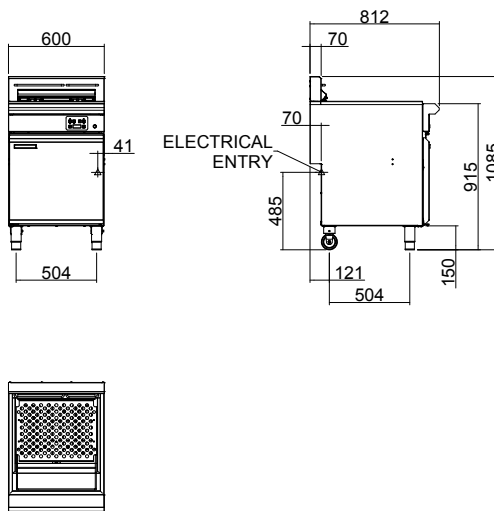
Extra large baskets

Side splash guards

Joining caps

Castors

E60E



[www.blue-seal.co.uk](http://www.blue-seal.co.uk)

United Kingdom

[blue-seal.co.uk](http://blue-seal.co.uk)

Blue Seal Limited

Unit 67

Gravelly Business Park

Gravelly

Birmingham B24 8TQ

England

Telephone 0121-327 5575

Facsimile 0121-327 9711

[sales@blue-seal.co.uk](mailto:sales@blue-seal.co.uk)

Australia

[moffat.com.au](http://moffat.com.au)

Moffat Pty Limited

740 Springvale Road

Mulgrave

Victoria 3170

Australia

Telephone +613-9518 3888

Facsimile +613-9518 3833

[vsales@moffat.com.au](mailto:vsales@moffat.com.au)

New Zealand

[moffat.co.nz](http://moffat.co.nz)

Moffat Limited

45 Illinois Drive

Izone Business Hub

Rolleston 7675

New Zealand

Telephone +64 3-983 6600

Facsimile +64 3-983 6660

[sales@moffat.co.nz](mailto:sales@moffat.co.nz)

International

[moffat.com](http://moffat.com)

[international@moffat.co.nz](mailto:international@moffat.co.nz)



ISO9001  
Quality  
Management  
Standard

Designed and manufactured by



ISO9001

All Blue Seal products are designed and manufactured by Moffat using the internationally recognised ISO9001 quality management system, covering design, manufacture and final inspection, ensuring consistent high quality at all times.

In line with policy to continually develop and improve its products, Moffat Limited reserves the right to change specifications and design without notice.



Copyright Moffat Ltd.  
UK.BS.01.23

an Ali Group Company



The Spirit of Excellence