

# Blue Seal Electric Combi Steamer

## SAPIENS BOOSTED E6BSD 6 x 1/1 GN



- Direct steam injection system
- Manual controls
- Electronic thermostat 30°C-300°C
- AUTOCLIMA automatic system for controlling the perfect climate in the cooking chamber
- Variable fan speed with up to 6 speeds
- 3.5" LCD – TFT colour display for favourite programs, pre-set programs, fan, automatic washing, menus and settings
- LED HVS alphanumeric display for temperature, Autoclimate, time and core temperature
- Rapid selection scroller knob for program using scroll & push functions
- Multi-point core temperature probe
- Built-in retractable hand shower with tap
- USB connection to download HACCP data, software updates and storing cooking programs

### GENERAL FEATURES

#### Cooking modes

- 95 preset recipe programs, including programs for reheating on the plate / pan
- 99 free programs, up to 9 cycles with name and icon creation
- Fast-Dry Boosted® - automatic system for quick dehumidification of the cooking chamber

#### Operation

- LED bars to indication actual cooking cycles in program mode
- Manual pre-heating
- Auto reverse (automatic reversing fan rotation) for perfect cooking uniformity
- Automatically regulated steam condensation
- Manual chamber pressure relief control
- Manual humidifier
- ECOVAPOR – automatic control of the system saturation in the cooking chamber
- Intelligent Energy System- oven optimises and controls the delivery of energy output to maintain best cooking temperature
- Self-diagnosis and fault display

#### Construction

- Perfectly smooth, watertight chamber
- Rear ventilated double tempered glass door with air chamber and interior heat-reflecting glass for less heat radiation towards operator
- Hinged inner glass for easy cleaning
- Adjustable door hinge for optimal seal
- Low consumption LED cooking chamber light
- IPX5 spray-proof and hose proof
- East Maintenance Access (EMA) – easy access for service maintenance at bottom front and right hand side of machine

#### Cleaning

- Vapour Cleaning System (VCS) automatic washing system caters for cleaning with reduce detergent usage in the chamber
- 7 automatic wash programs – manual, rinse, fast, soft, medium eco, hard eco, grill
- Wash Management System (WMS) – preschedule washing programs based on combi use

#### OPTIONAL FEATURES

- Right hinged door
- Configuration for connection to extraction hood

## Blue Seal Electric Combi Steamer SAPIENS BOOSTED E6BSD 6 x 1/1 GN

### Dimensions

Width	852mm
Depth	797mm
Height	775mm
Weight	110kg

### Packed dimensions

Width	990mm
Depth	940mm
Height	980mm
Weight	134.1kg

### Shelves

1/1 GN	6
Shelf Spacings	70mm

### Installation requirements

(for precise installation instructions, please refer to the unit's installation manual).

### Power connection requirements

Multi pole circuit breaker and all pole disconnection isolator switch installed near the appliance.

### Supply line voltage

400-415V ~ 50Hz, 3P+N+E

Special voltage options available on request.

### Power connection

Total (kW)	11.6
Convection power (kW)	11
Rated Current (A) (400V)	18

### Installation clearances

- Rear 50mm
- Right 500mm
- Left 50mm

\*Clearance required on fixed installations for service accessibility.

If heat sources are located near the RH side of the Sapiens combi, ensure that a minimum distance of 400mm is maintained. Install in accordance with local body regulations only on horizontal surfaces and not against combustible walls.

### Water connection requirements

- Cold water
- Flow pressure (200-500kPa)
- Min. Water Flow 10 l/min
- Soft water connection\*
- Shut-off valve with return flow inhibitor and dirt filter
- Water supply R3/4
- R50 waste water connection

### Water quality

Total Water hardness	60-90ppm
pH	>7.5
Cl (chloride)	max. 30 mg/l
Cl2 (free chlorine)	max. 0.1 mg/l
Fe (Iron)	max. 0.1 mg/l
NH2Cl (monochloramine)	0.2 mg/l
Cold water temperature	max. 30°C
Softener water temperature	max. 50°C
Electrical conductivity	50 – 200 µS/cm

(\*Water treatment may be required. Please refer to installation manual.)

### Emissions

Latent heat	2088W
Sensible heat	1392W
Waste water max discharge temperature	100°C
Noise during operation	<50 dBA



Australia  
www.moffat.com.au

New Zealand  
www.moffat.co.nz

Australia  
Moffat Pty Limited

Victoria/Tasmania  
740 Springvale Road  
Mulgrave, Victoria 3170  
Telephone 03-9518 3888  
Facsimile 03-9518 3833  
vsales@moffat.com.au

New South Wales  
Telephone 02-8833 4111  
nswsales@moffat.com.au

South Australia  
Telephone 03-9518 3888  
vsales@moffat.com.au

Queensland  
Telephone 07-3630 8600  
qldsales@moffat.com.au

Western Australia  
Telephone 08-9413 2400  
wasales@moffat.com.au

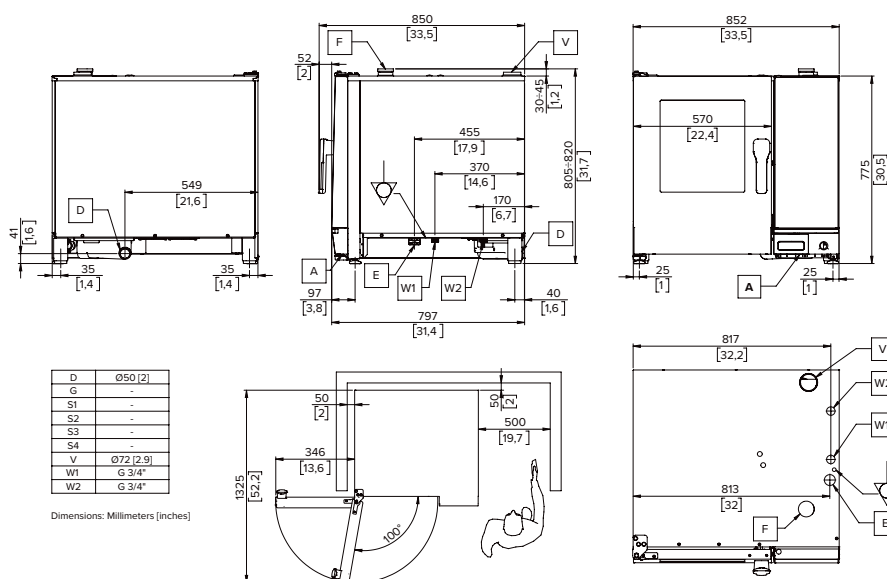
New Zealand  
Moffat Limited

Rolleston  
45 Illinois Drive  
Izone Business Hub  
Rolleston 7675  
Telephone 03-983 6600  
Facsimile 03-983 6660  
sales@moffat.co.nz

Auckland  
Telephone 09-574 3150  
sales@moffat.co.nz

In line with policy to continually develop and improve its products, Moffat Limited reserves the right to change specifications and design without notice.

© Copyright Moffat Ltd  
AN.SB.SS.01.23



Dimensions: Millimeters [Inches]