

Technical data sheet for

# FAST FRI SINGLE PAN ELECTRIC FRYER 600mm

FN8135E



- 22kW high performance single pan fryer
- Easy clean flat bar heating elements
- Easy clean stainless steel open pan with 10 year limited warranty
- 35L oil tank capacity
- 3 standard or 2 large basket capacity
- Electronic thermostat
- 32mm (1 1/4") drain valve
- Stainless steel exterior
- Easy service
- Fully modular

## Series Options

- FN - Standard splashback models
- FNB - Bold vitreous enamel colour front finish on standard splashback models

## Overall Construction

- Stainless steel pan
- Bull nose welded 1.5mm 304 stainless steel
- Splashback 1.5mm 304 stainless steel
- Side panels 1.2mm 304 stainless steel
- Double skin door with 0.9mm 304 stainless exterior
- Hinge out counter-balanced heating elements
- 32mm (1 1/4") drain valve
- 150mm legs in 63mm dia. heavy-duty 1.2mm 304 stainless steel with adjustable feet
- 3 standard baskets and stainless steel lid supplied standard

## Controls

- Electronic thermostat
- Large easy use control with easy view scale
- Thermostat range 90 – 190°C
- Fail-safe over-temperature safety cut-out
- Element tilt switch for heating cut-out on element lift
- Indicator lights for power and heating
- Safety start switch

## Cleaning and Servicing

- Open stainless steel pans with hinge out elements for easy clean
- Easy clean basket support bar
- 32mm (1 1/4") drain valve for effective draining
- Easy clean stainless steel exterior
- Access to all controls from front of unit

Technical data sheet for

# FAST FRI SINGLE PAN ELECTRIC FRYER 600mm

FN8135E

## Specifications

**Production rate**  
40kg/hr

**Pan Size**  
Width 515mm  
Length 390mm  
Oil frying depth 95mm  
Oil capacity 35L

**Baskets**  
3 nickel plated standard wire baskets  
145mm W x 335mm D x 145mm H  
Optional 2 nickel plated large wire baskets  
210mm W x 335mm D x 145mm H  
Stainless steel perforated basket support plate

**Elements**  
2 x 11kW flat bar stainless steel heating elements

**Electrical Requirements**  
22kW 400-415 Vac, 50/60Hz, 3P+N+E  
L1 30.5A  
L2 30.5A  
L3 30.5A

**Electrical Connection**  
41mm from RH side, 70mm from rear, and  
485mm from floor

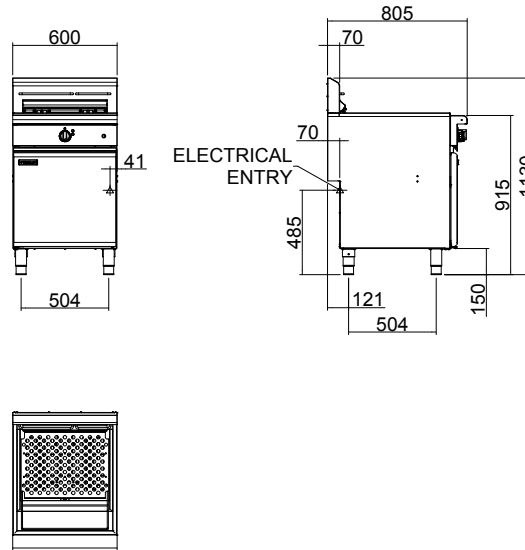
**DIMENSIONS**  
Width 600mm  
Depth 805mm  
Height 915mm  
Incl. splashback 1130mm

**NETT WEIGHT**  
74kg

**PACKING DATA**  
0.76m<sup>3</sup>, 99kg  
Width 670mm  
Depth 900mm  
Height 1255mm

**OPTIONS AT EXTRA COST**  
Fish plates  
Extra standard baskets  
Extra large baskets  
Side splash guards  
Joining caps  
Castors  
Plinth mounting

FN8135E



[moffat.com.au](http://moffat.com.au)  
[moffat.co.nz](http://moffat.co.nz)

**Australia**  
[moffat.com.au](http://moffat.com.au)

**Moffat Pty Limited**  
Victoria/Tasmania  
740 Springvale Road  
Mulgrave, Victoria 3170  
Telephone +613-9518 3888  
Facsimile +613-9518 3833  
[vsales@moffat.com.au](mailto:vsales@moffat.com.au)

New South Wales  
Telephone +612-8833 4111  
[nswsales@moffat.com.au](mailto:nswsales@moffat.com.au)  
South Australia  
Telephone +613-9518 3888  
[vsales@moffat.com.au](mailto:vsales@moffat.com.au)

Queensland  
Telephone +617-3630 8600  
[qldsales@moffat.com.au](mailto:qldsales@moffat.com.au)  
Western Australia  
Telephone +618-9413 2400  
[wasaes@moffat.com.au](mailto:wasaes@moffat.com.au)

**New Zealand**  
[moffat.co.nz](http://moffat.co.nz)

**Moffat Limited**  
Rolleston  
45 Illinois Drive  
Izone Business Hub  
Rolleston 7675  
Telephone +64 3-983 6600  
Facsimile +64 3-983 6660  
[sales@moffat.co.nz](mailto:sales@moffat.co.nz)  
Auckland  
Telephone +64 9-574 3150  
[sales@moffat.co.nz](mailto:sales@moffat.co.nz)



In line with policy to continually develop and improve its products, Moffat Limited reserves the right to change specifications and design without notice.

© Copyright Moffat Ltd  
AN.W8.SS.01.23

an Ali Group Company



The Spirit of Excellence