



Technical data sheet for

FAST FRI TWIN PAN ELECTRIC FRYER 600mm

FN8235EE



- 22kW high performance twin pan fryer
- Easy clean flat bar heating elements
- 2 digital display temperature control 4 basket timers
- Easy clean stainless steel open pan with 10 year limited warranty
- 17.5L per pan oil capacity
- 2 large basket capacity
- 25mm (1") drain valves
- Stainless steel exterior
- Easy service
- Fully modular

Series Options

- FN** - Standard splashback models
- FNB** - Bold vitreous enamel colour front finish on standard splashback models

Overall Construction

- Stainless steel pan
- Bull nose welded 1.5mm 304 stainless steel
- Splashback 1.5mm 304 stainless steel
- Side panels 1.2mm 304 stainless steel
- Double skin door with 0.9mm 304 stainless exterior
- Hinge out counterbalanced heating elements
- 25mm (1") drain valves
- 150mm legs in 63mm dia. heavy-duty 1.2mm 304 stainless steel with adjustable feet
- 2 large baskets and stainless steel lid supplied standard

Controls

- Digital display electronic thermostats
- Thermostat range 88-190°C
- 2 programmable basket timers with countdown display and alarms per pan
- Heating and basket drop displays
- Programmable melt cycles
- Fail-safe over-temperature safety cut-outs
- Element tilt switch for heating cut-out on element lift
- Safety start switch

Cleaning and Servicing

- Open stainless steel pans with hinge out elements for easy clean
- Easy clean basket support bar
- 25mm (1") drain valves for effective draining
- Easy clean stainless steel exterior
- Access to all parts from front of unit

Technical data sheet for

FAST FRI TWIN PAN ELECTRIC FRYER 600mm

FN8235EE

Specifications

Production rate
40kg/hr

Pan Size (per pan)
Oil capacity 17.5L
Width 250mm
Length 390mm
Oil frying depth 95mm

Baskets
2 nickel plated large wire baskets
210mm W x 335mm D x 145mm H
Stainless steel perforated basket support plate

Elements (per pan)
1 x 11kW flat bar stainless steel heating elements

Electrical Requirements
22kW 400-415 Vac, 50/60Hz, 3P+N+E
L1 30.5A
L2 30.5A
L3 30.5A

Electrical Connection
41mm from RH side, 70mm from rear, and
485mm from floor

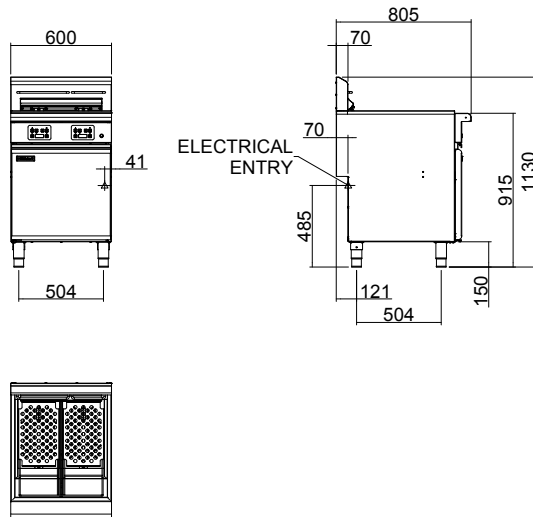
DIMENSIONS
Width 600mm
Depth 805mm
Height 915mm
Incl. splashback 1130mm

NETT WEIGHT
77kg

PACKING DATA
0.76m³, 102kg
Width 670mm
Depth 900mm
Height 1255mm

OPTIONS AT EXTRA COST
Fish plates
Extra baskets
Side splash guards
Joining caps
Castors
Plinth mounting

FN8235EE



moffat.com.au
moffat.co.nz

Australia
moffat.com.au

Moffat Pty Limited
Victoria/Tasmania
740 Springvale Road
Mulgrave, Victoria 3170
Telephone +613-9518 3888
Facsimile +613-9518 3833
vsales@moffat.com.au

New South Wales
Telephone +612-8833 4111
nswsales@moffat.com.au
South Australia
Telephone +613-9518 3888
vsales@moffat.com.au

Queensland
Telephone +617-3630 8600
qldsales@moffat.com.au
Western Australia
Telephone +618-9413 2400
wasaales@moffat.com.au

New Zealand
moffat.co.nz

Moffat Limited
Rolleston
45 Illinois Drive
Izone Business Hub
Rolleston 7675
Telephone +64 3-983 6600
Facsimile +64 3-983 6660
sales@moffat.co.nz
Auckland
Telephone +64 9-574 3150
sales@moffat.co.nz



In line with policy to continually develop and improve its products, Moffat Limited reserves the right to change specifications and design without notice.

© Copyright Moffat Ltd
AN.W8.SS.01.23

an Ali Group Company



The Spirit of Excellence