

## Twin Pan Electric Fryer 450mm

FNLB8224EE



- 14kW high performance twin pan fryer
- 2 digital display temperature control  
4 basket timers
- Easy clean stainless steel open pan with  
10 year limited warranty
- 12L per pan oil capacity
- 25mm (1") drain valves
- Stainless steel exterior
- Black vitreous enamel finish to front panels
- Easy service
- Fully modular

### OVERALL CONSTRUCTION

- Stainless steel pan
- Bull nose welded 1.5mm 304 stainless steel
- Splashback 1.5mm 304 stainless steel
- Side panels 1.2mm 304 stainless steel
- Double skin door with 0.9mm 304 stainless exterior
- Hinge out counterbalanced heating elements
- 25mm (1") drain valves
- 150mm legs in 63mm dia. heavy-duty 1.2mm 304 stainless steel with adjustable feet
- 2 baskets and stainless steel lid supplied standard

### CONTROLS

- Digital display electronic thermostats
- Thermostat range 88-195°C
- 2 programmable basket timers with countdown display and alarms per pan
- Heating and basket drop displays
- Programmable melt cycles
- Fail-safe over-temperature safety cut-outs
- Element tilt switch for heating cut-out on element lift

### CLEANING AND SERVICING

- Open stainless steel pans with hinge out elements for easy clean
- Easy clean basket support bar
- 25mm (1") drain valve for effective draining
- Easy clean stainless steel exterior
- Access to all controls from front of unit

### Series Options

FNLB - Low back models

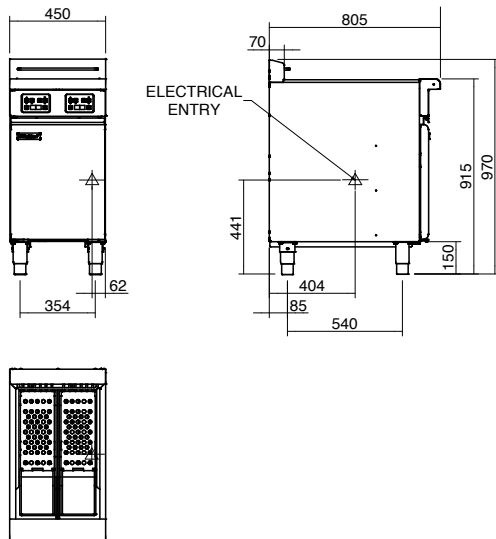
FNB - 215mm splashback option

---

# Waldorf Bold

## Twin Pan Electric Fryer 450mm

FNLB8224EE



### SPECIFICATIONS

#### Production rate

31kg/hr

#### Pan Size (per pan)

Oil capacity 12L (24lbs shortening)

Width 175mm

Length 380mm

Oil frying depth 95mm

#### Baskets

2 chrome plated wire baskets

140mm W x 335mm D x 145mm H

#### Elements (per pan)

3 x 2.83kW stainless steel heating element

#### Electrical requirements

17kW, 400-415Vac, 50/60hz, 3P+N+E

L1 23.6A

L2 23.6A

L3 23.6A

#### Electrical Connection

62mm from RH side, 365mm from rear and 440mm from floor

#### Dimensions

Width 450mm

Depth 805mm

Height 915mm

Incl. low back 970mm

Incl. splashback option 1130mm

#### Nett weight

74kg nett

#### Packing data

0.54m<sup>3</sup>, 116kg

Width 870mm

Depth 495mm

Height 1255mm

### OPTIONS AT EXTRA COST

Waldorf Filtamax filtration system

Extra baskets

Side splash guards

Joining caps

Castors

Plinth mounting

**MOFFAT**

moffat.com.au  
moffat.co.nz

### Australia

moffat.com.au

### Moffat Pty Limited

Victoria/Tasmania  
740 Springvale Road  
Mulgrave, Victoria 3170  
Telephone +613-9518 3888  
Facsimile +613-9518 3833  
vsales@moffat.com.au

New South Wales  
Telephone +612-8833 4111  
nswsales@moffat.com.au

South Australia  
Telephone +613-9518 3888  
vsales@moffat.com.au

Queensland  
Telephone +617-3630 8600  
qldsals@moffat.com.au

Western Australia  
Telephone +618-9413 2400  
wasales@moffat.com.au

### New Zealand

moffat.co.nz

### Moffat Limited

Rolleston  
45 Illinois Drive  
Izone Business Hub  
Rolleston 7675  
Telephone +64 3-983 6600  
Facsimile +64 3-983 6660  
sales@moffat.co.nz

Auckland  
Telephone +64 9-574 3150  
sales@moffat.co.nz



ISO9001  
Quality  
Management  
Standard

Designed and manufactured by



ISO9001

All Waldorf Bold products are designed and manufactured by Moffat using the internationally recognised ISO9001 quality management system, covering design, manufacture and final inspection, ensuring consistent high quality at all times.

In line with policy to continually develop and improve its products, Moffat Limited reserves the right to change specifications and design without notice.

© Copyright Moffat Ltd  
AN.WBD.S.02.19

an Ali Group Company



The Spirit of Excellence