

## MX27-ST57-C Roll-in Blast Chiller only

Remote condensing unit version

### Standard Features

- Roll-in trolley unit with right hinged door opening (trolley not included) - various door opening configuration available upon request
- 7" ergonomic touch screen with large keys for ease of use
- User friendly operation with easy to use functions:
  - Hard or soft chill mode
  - Easy switch to probe or timer mode
  - Self Adaptive intelligent chilling mode
- Auxiliary functions: ice cream hardening, ventilated drying, multiple timers, customisable multiple phases, raw fish sanitation
- 40 program cycles with favourites key – shortcuts to last 9 programs used
- Pre-chilling cycle key to maximise efficiency
- Automatic hold mode after each cycle
- Manual defrosting with automatic control of time
- 3 point core temperature probe
- Timer mode or continuous run
- Integrated door latch to aerate cabinet when not in use
- Automatic fan stop when opening the door
- USB HACCP Recorder
- External and internal finish made of 304 stainless steel
- Supplied with 20mm insulated stainless steel floor and ramp expansion and solenoid valves, drip tray and piping
- Heated door frame to reduce condensation
- Injected polyurethane foam insulation - 80mm thick
- Assembly required
- Remote condensing unit not supplied

Please refer to Moffat price list for options and accessories

### Technical data

Capacity	2 x 1/1GN trolley (trolley not included)
External dimensions	W 1320mm x D 1180mm x H 2170mm
Usable internal dimensions	W 760mm x D 960mm x H 1885mm (A1) W 760mm x D 1020mm x H 1885mm (A2)
Load capacity	160kg*
Electrical connections	3P+N+E, 400-415V, 50/60Hz, 20A, 4.4kW
Waste	Provide for a water runoff & trap to the selected waste point (B)
Door configuration	Must be stated at time of order
Nett weight	320kg
Remote condensing unit version (remote condensing unit not included)	
Remote condensing unit requirements - Refrigerant type R452A (other gas types available upon request)	
Chilling capacity upright Blast Chiller 7.1kW / 11.3kW / 16.2kW for the respective evaporation temperatures of -20/-10/0°C	
Remote condensing unit with pump down control	
Ambient temperature requirement +15°C — +43°C	

\* Note – Load capacities may vary depending on the thermal conductivity of the food being chilled, the thickness of product and container used.  
Trolley not included.

**Australia**  
moffat.com.au

**Moffat Pty Limited**  
740 Springvale Rd, Mulgrave  
Victoria 3170, Australia  
Telephone +613-9518 3888  
Facsimile +613-9518 3833  
vsales@moffat.com.au

**New Zealand**  
moffat.co.nz

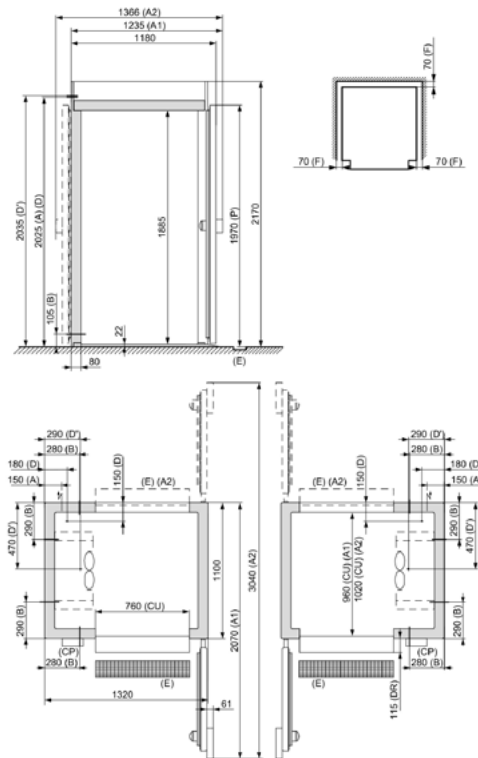
**Moffat Limited**  
45 Illinois Drive, Izone Business Hub  
Rolleston 7675, New Zealand  
Telephone +64 3-983 6600  
Facsimile +64 3-983 6660  
sales@moffat.co.nz

Disclaimer: All unit capacities are based on subjective testing. Moffat accepts no liability for production values.  
In line with policy to continually develop and improve its products, Moffat Limited reserves the right to change specifications and design without notice.

© Copyright Moffat Ltd  
AN-FRI-S-2501

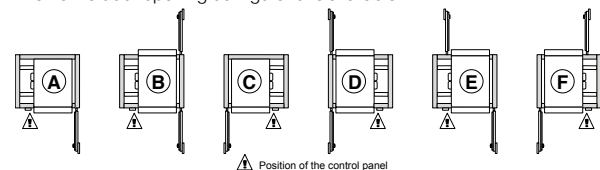


### Dimensions



- |  |   |
|--|---|
| (A) Electrical power supply                | (F) Distance from wall                  |
| (B) Pre-drilling for de-icing water runoff | (CU) Useful                             |
| (D) Liquid Line 1/2"                       | (P) Door height compared with the floor |
| (D') Suction line 1 1/8"                   | (DR) Ramp proud                         |
| (CP) Control panel                         | (A1) Single access                      |
| (E) Duct                                   | (A2) Pass through                       |

Alternative door opening configurations available



an Ali Group Company



The Spirit of Excellence