

MX6SXTS7-C Roll-in Blast Chiller only

Remote condensing unit version

Standard Features

- Roll-in trolley unit with single or passthrough access (trolley not included) - various door opening configuration available upon request
- 7" ergonomic touch screen with large keys for ease of use
- User friendly operation with easy to use functions:
 - Hard or soft chill mode
 - Easy switch to probe or timer mode
 - Self Adaptive intelligent chilling mode
- Auxiliary functions: ice cream hardening, ventilated drying, multiple timers, customisable multiple phases, raw fish sanitation
- 40 program cycles with favourites key – shortcuts to last 9 programs used
- Supplied with 20mm insulated stainless steel floor and ramp expansion and solenoid valves, drip tray and piping
- Pre-chilling cycle key to maximise efficiency
- Automatic hold mode after each cycle
- Manual defrosting with automatic control of time
- 3 point core temperature probe
- Timer mode or continuous run
- Integrated door latch to aerate cabinet when not in use
- Automatic fan stop when opening the door
- USB HACCP Recorder
- External and internal finish made of 304 stainless steel
- Heated door frame to reduce condensation
- Injected polyurethane foam insulation - 80mm thick
- Assembly required
- Remote condensing unit not supplied

Please refer to Moffat price list for options and accessories

Technical data

Capacity	6 x 1/1GN trolley (trolley not included)
External dimensions	W 1460mm x D 2270mm x H 2170mm
Usable internal dimensions	W 900mm x D 2060mm x H 1885mm (A1) W 900mm x D 2120mm x H 1885mm (A2)
Load capacity	400kg*
Electrical connections	3P+N+E, 400-415V, 50/60Hz, 20A, 7.3kW
Waste	Provide for a water runoff & trap to the selected waste point (B)
Door configuration	Must be stated at time of order
Nett weight	795kg
Remote condensing unit version (remote condensing unit not included)	
Remote condensing unit requirements - Refrigerant type R452A (other gas types available upon request)	
Condensing capacity upright Blast Chiller 21.1kW / 29.2kW / 43kW for the respective evaporation temperatures of -20/-10/0°C	
Remote condensing unit with pump down control	
Ambient temperature requirement +15°C — +43°C	

* Note – Load capacities may vary depending on the thermal conductivity of the food being chilled, the thickness of product and container used

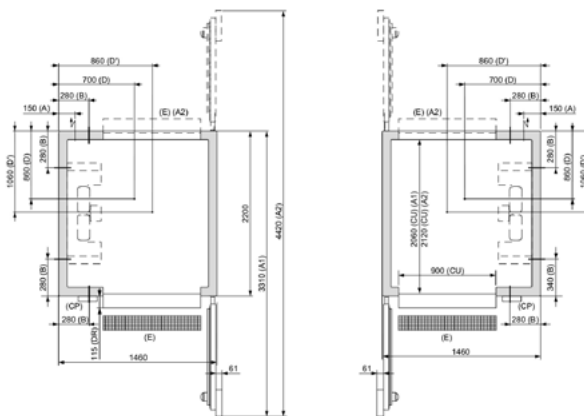
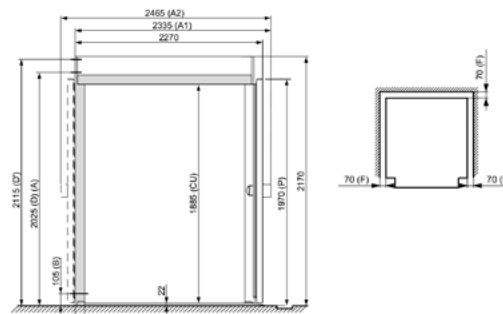
Australia moффat.com.au	New Zealand moффat.co.nz
Moffat Pty Limited 740 Springvale Rd, Mulgrave Victoria 3170, Australia Telephone +613-9518 3888 Facsimile +613-9518 3833 vsales@moffat.com.au	Moffat Limited 45 Illinois Drive, Izone Business Hub Rollston 7675, New Zealand Telephone +64 3-983 6600 Facsimile +64 3-983 6660 sales@moffat.co.nz

Disclaimer: All unit capacities are based on subjective testing. Moffat accepts no liability for production values.
In line with policy to continually develop and improve its products, Moffat Limited reserves the right to change specifications and design without notice.

© Copyright Moffat Ltd
AN-FRI-S-2501

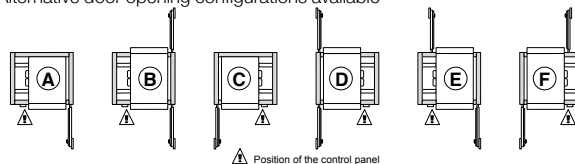


Dimensions



- | | |
|---|--|
| (A) Electrical power supply | (F) Distance from wall |
| (B) Pre-drilling for de-icing
water runoff | (CU) Useful |
| (D) Liquid Line 5/8" | (P) Door height compared with
the floor |
| (D') Suction line 1"1/8 | (DR) Ramp proud |
| (CP) Control panel | (A1) Single access |
| (E) Duct | (A2) Pass through |

Alternative door opening configurations available



 Position of the control panel



an Ali Group Company



The Spirit of Excellence