

## Electric Griddle 1200mm

GPLB8120E-B, GPLB8120E-CD, GPLB8120E-LS, GPLB8120E-RB



GPLB8120E-CD

- Heavy-duty thermostatic electric griddle
- 20mm thick griddle plate
- Ribbed plate options
- Chromed mirror plate options
- Top weld sealed plates
- 16.2kW heating elements
- Separate left, centre, and right heat zones
- 3 models of base unit
- 1 model of refrigerated base with two GN 2/1 drawers
- Stainless steel exterior
- Black vitreous enamel finish to front panels
- Easy clean
- Easy service
- Fully modular

### Series Options

GPLB - Low back models  
GPB - 215mm splashback option

### OVERALL CONSTRUCTION

#### GRIDDLE

- 20mm thick machined top plates standard
- Optional ribbed plate sections
- Optional mirror finish hard chrome plates
- 2.5mm thick 304 stainless steel splash guards sides and rear
- 2.0mm thick grease channel
- Dual thermostatic control zones
- Welded hob surround with 1.5mm 304 stainless steel bull nose
- Splashback and side panels 1.2mm 304 stainless steel
- Front panels 0.9mm 304 stainless steel
- Stainless steel grease drawer
- Overlapping finish at front and rear of plate for easy clean

#### BENCH MOUNT (SUPPLIED AS -B MODEL)

- Four 63mm dia. heavy-duty 1.2mm 304 stainless steel bench legs with adjustable feet.
- Adjustable height 80mm – 105mm

#### CABINET BASE (SUPPLIED AS -CD MODEL)

- Fully modular for match suite finish
- Double skin 0.9mm 304 stainless steel interior and exterior
- Optional GN 1/1 4 position racking kit (1 or 2 cabinet bays)
- Up to eight 65mm GN 1/1 capacity
- 63mm dia. heavy-duty 1.2mm 304 stainless steel legs with adjust. feet

#### LEG STAND (SUPPLIED AS -LS MODEL)

- Fully modular for matched suite finish
- Framed top for connection to Griddle
- 63mm dia. heavy-duty 1.2mm 304 stainless steel legs with adjust. feet
- Fully modular framed stand shelf with 0.9mm 304 stainless steel finish
- Shelf to top stainless steel backstop panel for convenience and rigidity
- Suitable for rear or through shelf gas connection to Griddle
- Quick assembly design (no tools required)

#### REFRIGERATED BASE (SUPPLIED AS -RB MODEL)

- Self contained suite matched modular base
- Ventilated system with R134a refrigerant
- -2° to + 8°C temperature (Tropical Climate rated)
- Two GN 2/1 drawers
- 100mm deep pan drawer capacity
- Heavy-duty European telescopic drawer guides
- Magnetic drawer gaskets (replaceable without tools)
- 50mm fully foamed CFC free insulation
- 304 stainless steel exterior and interior
- Anti-corrosion treated evaporator
- No condensate drain required
- 63mm dia. heavy-duty 1.2mm 304 stainless steel legs with adjust. feet
- Condensing unit removable through front of unit for service
- Easy clean interior
- Refrigerated bases in stainless steel finish only

### CONTROLS

#### GRIDDLE

- Separate left, centre and right side heat zones
- Three 50-300°C thermostats
- Large easy use control knob - heat resistant reinforced
- Easy view control settings on knob
- Indicator lights for power and heating

#### REFRIGERATED BASE

- Digital control electronic thermostat
- Automatic defrost
- Automatic evaporation of defrost water
- -2° to +8°C temperature range

### CLEANING AND SERVICING

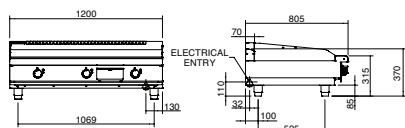
- All models with easy clean stainless steel external finish
- Plate is finished front and rear with overlap construction to remove cleaning traps
- Control service through front of unit

## Electric Griddle 1200mm

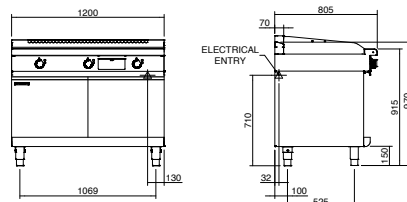


moffat.com.au  
moffat.co.nz

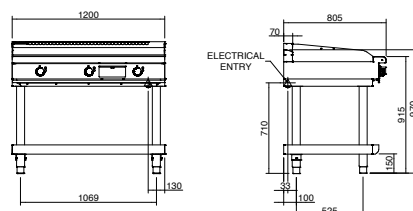
GPLB8120E-B



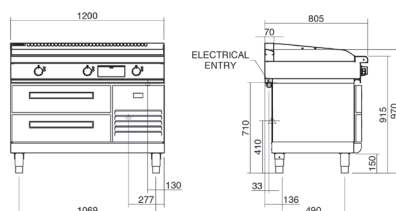
GPLB8120E-CD



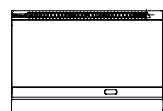
GPLB8120E-LS



GPLB8120E-RB



GPLB8120E



### SPECIFICATIONS

#### Griddle

#### Elements

9 x 1.8kW stainless steel sheathed heating elements

#### Electrical requirements

16.2kW

400-415Vac, 50/60Hz, 3P+N+E

#### Phase loading

L1 22.5A

L2 22.5A

L3 22.5A

#### Plate

Cooking surface 1192mm x 530mm, 6318cm<sup>2</sup>

#### Electrical connection

130mm from LH side, 32mm from rear, and 655mm from floor

#### Refrigerated base

Type Ventilated system

Refrigerant R134a (160grams)

Climate classification T – tropical

#### Electrical connection

220-240Vac, 50Hz, 1.8A, 1P+N+E

3 pin 10A plug cordset fitted

#### Dimensions

#### Bench models

Width 1200mm

Depth 805mm

Height 315mm

Incl. low back 370mm

Incl. splashback option 530mm

#### All models (excluding Bench model)

Width 1200mm

Depth 805mm

Height 915mm

Incl. low back 970mm

Incl. splashback option 1130mm

#### Nett weight

#### Bench and Leg Stand models

134kg

#### Cabinet Base and Refrigerated Base models

180kg

#### Packing data

#### Bench model

1.36m<sup>3</sup>, 192kg

Width 1245mm

Depth 870mm

Height 665mm

#### All models (excluding Bench model)

1.36m<sup>3</sup>, 260kg

Width 1245mm

Depth 870mm

Height 1255mm

#### OPTIONS AT EXTRA COST

Joining caps

Castors

Plinth mounting

Ribbed plate options

Chromed plate options

#### Australia

moffat.com.au

#### Moffat Pty Limited

Victoria/Tasmania  
740 Springvale Road  
Mulgrave, Victoria 3170  
Telephone +613-9518 3888  
Facsimile +613-9518 3833  
vsales@moffat.com.au

#### New South Wales

Telephone +612-8833 4111  
nswsales@moffat.com.au

#### South Australia

Telephone +613-9518 3888  
vsales@moffat.com.au

#### Queensland

Telephone +617-3630 8600  
qldsales@moffat.com.au

#### Western Australia

Telephone 618-9413 2400  
wasales@moffat.com.au

#### New Zealand

moffat.co.nz

#### Moffat Limited

Rolleston  
45 Illinois Drive  
Izone Business Hub  
Rolleston 7675  
Telephone +64 3-983 6600  
Facsimile +64 3-983 6660  
sales@moffat.co.nz  
Auckland  
Telephone +64 9-574 3150  
sales@moffat.co.nz



Designed and manufactured by



ISO9001

All Waldorf Bold products are designed and manufactured by Moffat using the internationally recognised ISO9001 quality management system, covering design, manufacture and final inspection, ensuring consistent high quality at all times.

In line with policy to continually develop and improve its products, Moffat Limited reserves the right to change specifications and design without notice.

© Copyright Moffat Ltd  
AN.WBD.S.01.2020

an Ali Group Company



The Spirit of Excellence