

## Electric Griddle 600mm

GPLB8600E-B, GPLB8600E-CD, GPLB8600E-LS



GPLB8600E-CD

- Heavy-duty thermostatic electric griddle
- 20mm thick griddle plate
- Ribbed plate options
- Chromed mirror plate options
- Top weld sealed plates
- 7.2kW heating elements
- 2 models of base unit
- Stainless steel exterior
- Black vitreous enamel finish to front panels
- Easy clean
- Easy service
- Fully modular

### OVERALL CONSTRUCTION

#### GRIDDLE

- 20mm thick machined top plates standard
- Optional ribbed plate sections
- Optional mirror finish hard chrome plates
- 2.5mm thick 304 stainless steel splash guards sides and rear
- 2.0mm thick grease channel
- Dual thermostatic control zones
- Welded hob surround with 1.5mm 304 stainless steel bull nose
- Splashback and side panels 1.2mm 304 stainless steel
- Front panels 0.9mm 304 stainless steel
- Stainless steel grease drawer
- Overlapping finish at front and rear of plate for easy clean

#### BENCH MOUNT (SUPPLIED AS -B MODEL)

- Four 63mm dia. heavy-duty 1.2mm 304 stainless steel bench legs with adjustable feet.
- Adjustable height 80mm – 105mm

#### CABINET BASE (SUPPLIED AS -CD MODEL)

- Fully modular for match suite finish
- Double skin 0.9mm 304 stainless steel interior and exterior
- Optional GN 1/1 4 position racking kit
- 63mm dia. heavy-duty 1.2mm 304 stainless steel legs with adjust. feet

#### LEG STAND (SUPPLIED AS -LS MODEL)

- Fully modular for matched suite finish
- Framed top for connection to Griddle
- 63mm dia. heavy-duty 1.2mm 304 stainless steel legs with adjust. feet
- Fully modular framed stand shelf with 0.9mm 304 stainless steel finish
- Shelf to top stainless steel backstop panel for convenience and rigidity
- Suitable for rear or through shelf gas connection to Griddle
- Quick assembly design (no tools required)

### CONTROLS

- 50-300°C thermostat
- Single temperature control zone
- Large easy use control knob - heat resistant reinforced
- Easy view control settings on knob
- Indicator lights for power and heating

### CLEANING AND SERVICING

- All models with easy clean stainless steel external finish
- Plate is finished front and rear with overlap construction to remove cleaning traps
- Control service through front of unit

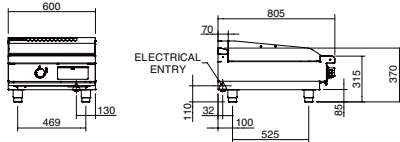
### Series Options

GPLB - Low back models

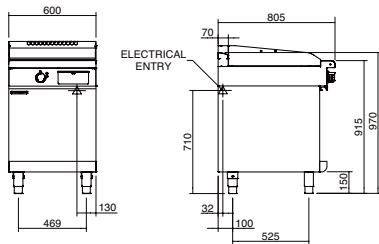
GPB - 215mm splashback option

## Electric Griddle 600mm

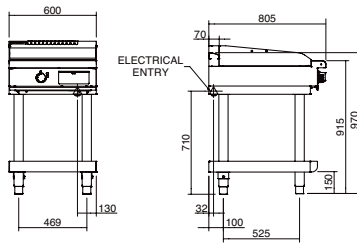
GPLB8600E-B



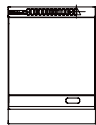
GPLB8600E-CD



GPLB8600E-LS



GPLB8600E



### SPECIFICATIONS

#### Griddle

#### Elements

3 x 2.4kW stainless steel sheathed heating elements

#### Electrical requirements

7.2kW

230-240Vac, 50/60Hz, 1P+N+E, 30A

#### Plate

Cooking surface 592mm x 530mm, 3138cm<sup>2</sup>

#### Electrical connection

130mm from LH side, 32mm from rear, and 740mm from floor

#### Dimensions

##### Bench models

Width 600mm

Depth 805mm

Height 315mm

Incl. low back 370mm

Incl. splashback option 530mm

##### All models (excluding Bench model)

Width 600mm

Depth 805mm

Height 915mm

Incl. low back 970mm

Incl. splashback option 1130mm

#### Nett weight

##### Bench and Leg Stand models

118kg

##### Cabinet Base model

120kg

#### Packing data

##### Bench model

0.37m<sup>3</sup>, 170kg

Width 645mm

Depth 870mm

Height 665mm

##### All models (excluding Bench model)

0.70m<sup>3</sup>, 172kg

Width 645mm

Depth 870mm

Height 1255mm

#### OPTIONS AT EXTRA COST

Joining caps

Castors

Plinth mounting

Ribbed plate options

Chromed plate options



moffat.com.au  
moffat.co.nz

#### Australia

moffat.com.au

#### Moffat Pty Limited

Victoria/Tasmania  
740 Springvale Road  
Mulgrave, Victoria 3170  
Telephone +613-9518 3888  
Facsimile +613-9518 3833  
vsales@moffat.com.au

#### New South Wales

Telephone +612-8833 4111  
nswsales@moffat.com.au

#### South Australia

Telephone +613-9518 3888  
vsales@moffat.com.au

#### Queensland

Telephone +617-3630 8600  
qldsales@moffat.com.au

#### Western Australia

Telephone 618-9413 2400  
wasales@moffat.com.au

#### New Zealand

moffat.co.nz

#### Moffat Limited

Rolleston

45 Illinois Drive

Izone Business Hub

Rolleston 7675

Telephone +64 3-983 6600

Facsimile +64 3-983 6660

sales@moffat.co.nz

#### Auckland

Telephone +64 9-574 3150

sales@moffat.co.nz



ISO9001  
Quality  
Management  
Standard

Designed and manufactured by



#### ISO9001

All Waldorf Bold products are designed and manufactured by Moffat using the internationally recognised ISO9001 quality management system, covering design, manufacture and final inspection, ensuring consistent high quality at all times.

In line with policy to continually develop and improve its products, Moffat Limited reserves the right to change specifications and design without notice.

© Copyright Moffat Ltd  
AN.WBD.S.02.19

an Ali Group Company



The Spirit of Excellence