

INDUCTION RANGE CONVECTION OVEN 900mm

IN54F - GN 2/1 Electric Convection Oven with 4 x 5.0kW Full Area Induction

- Heavy-duty construction
- Four 5.0kW Full Area Induction zones
- Automatic pan detection
- GN 2/1 6.1kW electric convection oven
- Dual oven circulation fans
- Drop down door
- Stainless steel exterior
- Easy clean
- Easy service
- Fully modular



IN54F



Overall Construction

- Galvanized steel chassis
- Welded hob with 2.0mm 304 stainless steel top
- Splashback and hob sides 1.2mm 304 stainless steel
- Front panels and oven sides 0.9mm 304 stainless steel
- Vitreous enamelled control panel
- 63mm dia. heavy-duty 1.2mm 304 stainless steel adjustable legs at front and two rollers at rear

Cooktop

- 6mm thick ceramic glass 650mm x 650mm
- Induction air cooling with front access air filter
- Fan cooled induction cooktop oven heat protection with front exhaust

Oven

- Fully welded and vitreous enamelled oven liner
- GN 2/1 capacity with 5 position racking
- Heavy-duty easy remove heavy wire chrome rack supports
- Vitreous enamelled removable oven spill tray
- 6.0kW heating elements
- 2 fan motors
- Drop down door
- 0.9mm 304 stainless steel door outer
- 1.0mm vitreous enamelled door inner
- 38mm high density fibreglass insulated
- Supplied with two chrome wire oven racks

Controls

Induction Cooktop

- Variable power controls for each induction zone
- Heating ON indicator lights with pan detection indication
- Error mode indicator

Oven

- 50-320°C thermostatic control
- Indicator lights for power and heating
- Oven fans and heating automatic off when door open

Cleaning and Servicing

- All models with easy clean stainless steel external finish
- Fully sealed cooking surface
- Removable for cleaning cooling air filter
- Removable for cleaning exhaust screen
- Removable oven racking and spill tray
- Easy clean vitreous enamel oven and door inner
- Access to all service parts from front of unit

INDUCTION RANGE CONVECTION OVEN 900mm

IN54F - GN 2/1 Electric Convection Oven with 4 x 5.0kW Full Area Induction

Specifications

Cooktop

IN54F

4 x 5.0kW Full Area Induction zones

Oven

2 x 2kW oven fan elements

1 x 2kW oven bottom element

2 x oven circulation fan motors

Oven dimensions

Width 665mm

Depth 560mm

Height 350mm

Rack size 655mm x 530mm

Rack positions 5

Electrical requirements

IN54F

26.1kW, 400-415V, 50/60Hz, 3P+N+E

36.3A / phase

Electrical connection

130mm from RH side, 32mm from rear, and 318mm from floor

Dimensions

Width 900mm

Depth 812mm

Height 915mm

Incl. splashback 1085mm

Nett weight

168.5kg

Packing data

1.03m³, 235kg

Width 945mm

Depth 865mm

Height 1255mm

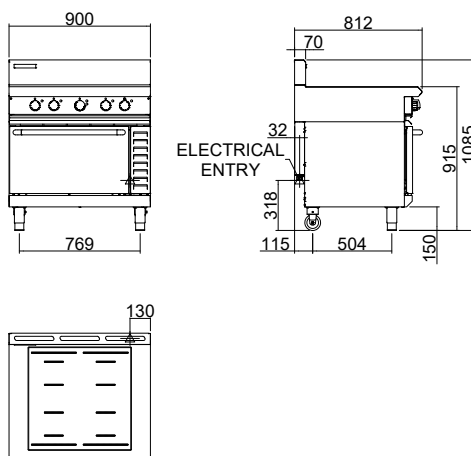
Options

Adjustable feet at rear

Castors

Plinth mounting

IN54F



moffat.com.au

moffat.co.nz

Australia

moffat.com.au

Moffat Pty Limited

Victoria/Tasmania
740 Springvale Road
Mulgrave, Victoria 3170
Telephone +613-9518 3888
Facsimile +613-9518 3833
vsales@moffat.com.au

New South Wales
Telephone +612-8833 4111
nswsales@moffat.com.au

South Australia
Telephone +613-9518 3888
vsales@moffat.com.au

Queensland
Telephone +617-3630 8600
qldsales@moffat.com.au

Western Australia
Telephone +618-9413 2400
wasaless@moffat.com.au

New Zealand

moffat.co.nz

Moffat Limited

Rolleston
45 Illinois Drive
Izone Business Hub
Rolleston 7675
Telephone +64 3-983 6600
Facsimile +64 3-983 6660
sales@moffat.co.nz

Auckland
Telephone +64 9-574 3150
sales@moffat.co.nz



In line with policy to continually develop and improve its products, Moffat Limited reserves the right to change specifications and design without notice.

© Copyright Moffat Ltd
AN.BSE.01.23

an Ali Group Company



The Spirit of Excellence