

MAR Series Scale Ice Maker – up to 540kg

MAR 79 Split CO2 Scale Ice thickness – 1-2mm, residual water content 2%



Scale ice - 1-2mm, residual water content 2%



Note: Ice production rate is measured with the water temperature at 10°C and an ambient temperature of 21°C.

- Up to 540kg daily production capacity
- Scale ice machine, in “compact system” version, built in unit
- Head only ice maker, requires a separate storage bin to store ice product
- Air Cooled version
- Hydrocarbons R744 refrigerant gas
- AISI304 Stainless steel evaporating drum and ice scraper blade
- Low-water sensor protection
- Drive motor / gear reducer with V-Belt drive
- Plug and work technology
- On/off manual switch, with weekly programmable timer
- Water in / ice out concept limits excess energy, water and time wastage

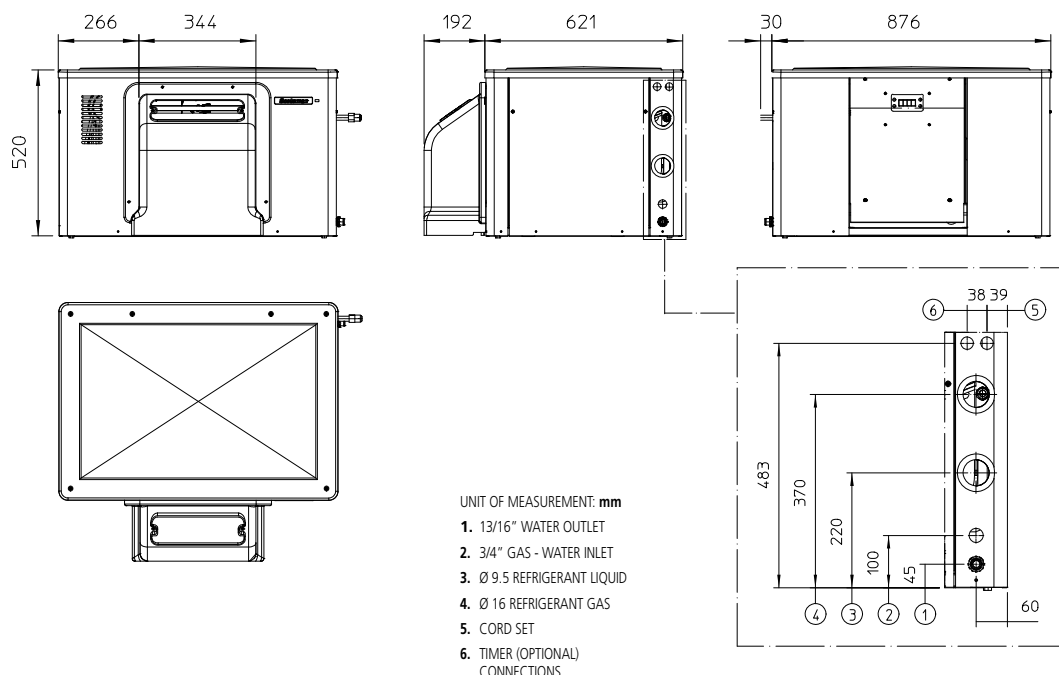
- Agion Technology resists the growth of microbes and the development of unpleasant odours
- Simple, reliable electromechanic controls
- Resistant stainless steel exterior
- Easy access front condenser air filter
- External indicator lights to show operation status
- Includes water and drain hose

Recommended Storage Bins

- UBH 1100 – Upright storage bin with 553kg storage capacity
- UBH 1600 – Upright storage bin with 812kg storage
- SIS 700 – Ice shuttle storage system – 318 + 73kg storage

MAR Series Scale Ice Maker – up to 540kg

MAR 79 Split CO2



moffat.com.au

Australia
Moffat Pty Limited
Victoria/Tasmania
740 Springvale Road
Mulgrave, Victoria 3170
Telephone 03-9518 3888
Facsimile 03-9518 3833
vsales@moffat.com.au

New South Wales
Telephone 02-8833 4111
nswsales@moffat.com.au

South Australia
Telephone 03-9518 3888
vsales@moffat.com.au

Queensland
Telephone 07-3630 8600
qldsales@moffat.com.au

Western Australia
Telephone 08-9413 2400
wasales@moffat.com.au

Ice production per 24 hours

Ambient temperature / Water temperature

10°C / 10°C	21°C / 10°C	32°C / 21°C
1mm: 540	1mm: 540	1mm: 380
2mm: 486	2mm: 486	2mm: 342

Dimensions

Width:	906mm
Depth:	813mm
Height:	520mm
Nett weight:	95kg
Packed weight:	112kg

Water consumption

Air cooled version: 15.0 litres per hour

Electrical rating

Air cooled version: 400-415V, 3P+N+E, 50Hz, 200W,
10A cord supplied
No. Circuit wire: 5
Compressor: 2800W
Energy consumption: 4.8kW/24hr

Refrigerant type

R744

Installation distance from wall

Rear 100mm
Sides 150mm
Operating requirement air temperature 10-43°C

Water connection requirements

Inlet connection: R 3/4"
Cold water: 5-35°C
Pressure: 100-500kPa
Water outlet connection: Ø3/4"

Important Notice:

Models and specifications are subject to change without notice. This spec sheet is meant for commercial purpose only. For technical documentation please refer to our service manuals.



© Copyright Moffat Ltd
AU.SM.2201