



TECHNICAL SPECIFICATION SHEET FOR

Icematic Modular Ice Flaker MF125



- Modular high capacity ice flaker head only
- **120kg** daily production rate
- **4 litres** per hour water consumption
- Air cooled condensing unit
- R290 propane refrigerant gas
- Electronic control panel with LED showing proper functioning or warning indicators
- Optical ice level control with yellow LED light indicator when full
- Stainless steel external body
- Requires storage bin model SB105, SB155, SB205*, SB255*, SB305*
- Moffat TA13-NZ filter kit, including head and fittings

* Cover kits required to suit with storage bins as follow: KF205-255 for SB205, SB255; KF 305 for SB305

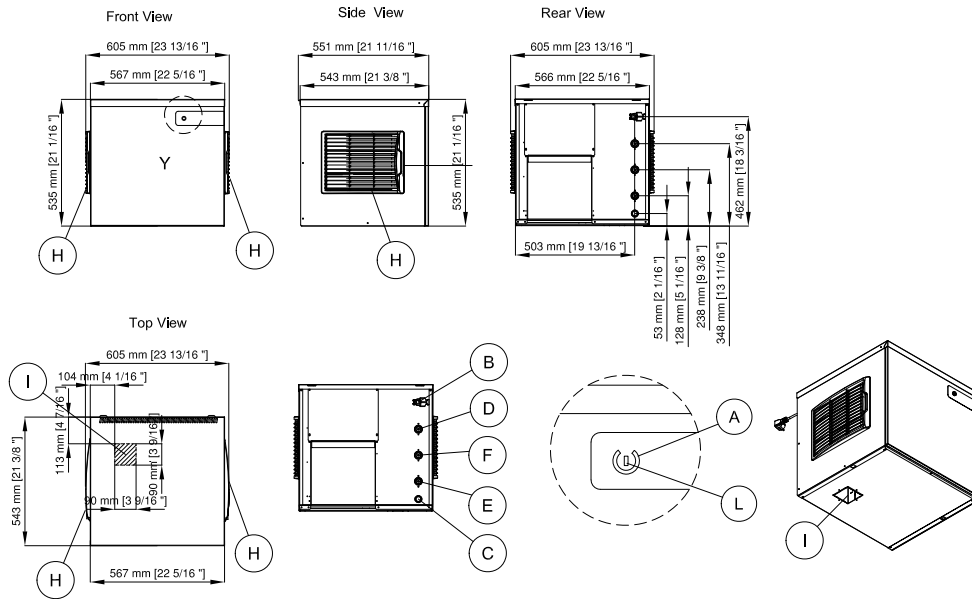
Note: Ice production rate is measured with the water temperature at 10°C and an ambient temperature of 21°C.





TECHNICAL SPECIFICATION SHEET FOR

Icematic Modular Ice Flaker MF125



- A** Switch Touch START-STANDBY
- B** Electrical cable supply
- C** Water outlet connection Ø 20 mm
- D** Water outlet connection water condensation Ø 20 mm
- E** Water inlet connection - 3/4" gas
- F** Water inlet connection water condensation 3/4"
- H** Air Filter
- I** Ice drop area
- L** Led white-red regulation humidity ice and set T° storage probe

Ice production per 24 hours

		Water temperature				
		32°	21°	15°	10°	
Ambient temperature	10°	112	121	125	130	kg
	21°	105	114	118	120	kg
	32°	85	91	95	98	kg
	38°	76	82	86	88	kg

MF125

Dimensions

Width: 570mm
 Height: 545mm
 Depth: 535mm
 Nett weight: 53kg
 Packed weight: 60kg

Water consumption

Air cooled condensing unit: 4 litres per hour

Electrical rating

220-240V, 1P+N+E, 50Hz
 Compressor power rating 634W
 Total absorbed power 570W,
 15A cordset fitted

Refrigerant type

R290

Installation distance from wall

- rear 150mm
 - right 150mm
 - left 150mm

Placement of unit should be indoors in an environment that does not exceed the air and water temperature limitations of the unit

Water connection requirements

Inlet connection: R 3/4"
 Cold water (5-35°C)
 Pressure (1-5 bar)
 Water outlet connection: Ø 20mm



moffat.co.nz

New Zealand
 Moffat Limited
 Christchurch
 45 Illinois Drive
 Rolleston
 Christchurch 7675
 Telephone 03-983 6600
 Facsimile 03-983 6660
 sales@moffat.co.nz
 Auckland
 Telephone 09-574 3150
 sales@moffat.co.nz

Disclaimer:
 All unit capacities are based on subjective testing. Moffat accepts no liability for production values.

In line with policy to continually develop and improve its products, Moffat Limited reserves the right to change specifications and design without notice.



© Copyright Moffat Ltd
 NZ.ICES.2301

