

## Viking 100E Combi Jacketed Kettle

Model – Viking Combi 100E (4215351)

### STANDARD FEATURES

- Viking kettle with mixer
- Electric heated version
- 316 Stainless steel mixing bowl
- Electromechanical controls
- Safety grid lid
- Stepless temperature control
- Multi-function mixing tool
- 2 mixing programs
- Electric tilting
- Measuring stick
- Water faucet (cold water)
- Hand shower
- Strainer plate

Please refer to Moffat price list for options and accessories

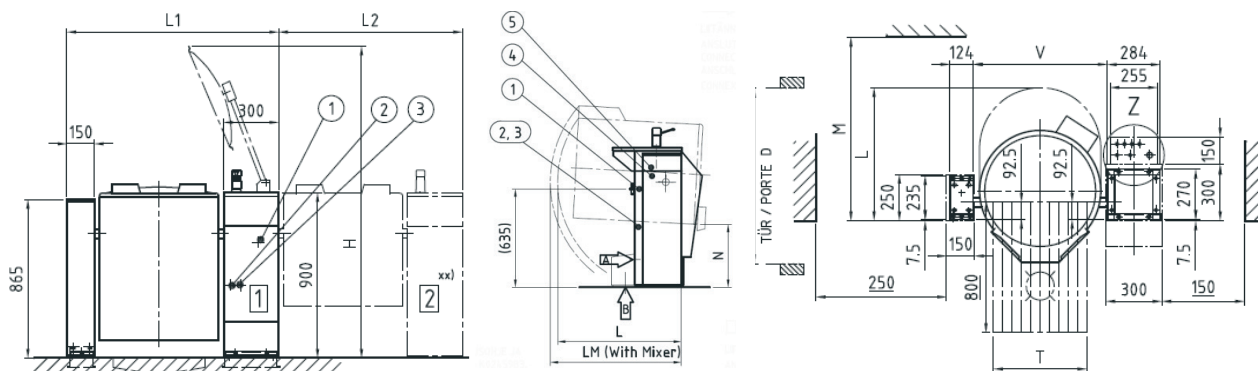


### TECHNICAL DATA

Net Volume	100L	Electrical	Power 16.75 kW
Spare Volume	10.5 L		Voltage 400-415V,
Gross Volume	110.5 L		3P+N+E 50/60Hz
Dimensions			AMP 35A
Width	1154mm	Total Heat	16kW
Height	1039mm	Load	Latent 0.8kW,
Depth	792mm		Sensible 3.4 kW
Connections		Waste	By kitchen
Water	Cold ø15mm		contractor
	Hot ø10mm	Nett Weight	185 kg

**NOTE - Mandatory installation kit required for all installations, options are:**

Single kettle surface – 4215837  
Single kettle subsurface – 4215838  
Group kettle surface – 4215845  
Group kettle subsurface - 4215846



**Australia**  
moffat.com.au

**Moffat Pty Limited**  
740 Springvale Road  
Mulgrave  
Victoria 3170  
Australia  
Telephone +613-9518 3888  
Facsimile +613-9518 3833  
vsales@moffat.com.au

**New Zealand**  
moffat.co.nz

**Moffat Limited**  
45 Illinois Drive  
Izone Business Hub  
Rolleston 7675  
New Zealand  
Telephone +64 3-983 6600  
Facsimile +64 3-983 6660  
sales@moffat.co.nz

- (1) Electrical connection
- (2) Cold water connection
- (3) Hot water connection
- (4) Data cable (HACCP option)
- (5) Control cables to building for heating control of kettle

Model	L1 mm	L2 mm	M mm	L mm	LM mm	H mm	T mm	D mm	N mm	V mm
100E	1154	1004	1080	710	850	1800	500	785	405	720

Disclaimer: All unit capacities are based on subjective testing. Moffat accepts no liability for production values.  
In line with policy to continually develop and improve its products, Moffat Limited reserves the right to change specifications and design without notice.