

Electric Cooktops 600mm - Sealed Hobs

RNLB8400SE-B, RNLB8400SE-LS, RNLB8400SE-CD



RNLB8400SE-CD

- Heavy-duty construction
- 2.6kW cast iron hot plate elements
- 3 models of base unit
- Stainless steel exterior
- Easy clean
- Easy service
- Fully modular

OVERALL CONSTRUCTION

COOKTOP

- Welded hob with one-piece formed 2.0mm 304 stainless steel top
- Splashback and side panels 1.2mm 304 stainless steel
- Front panels vitreous enamel finish
- 2.6kW cast iron hot plate elements with thermal protection
- Aluminised steel internal construction

BENCH MOUNT (SUPPLIED AS -B MODEL)

- Four 63mm dia. heavy-duty 1.2mm 304 stainless steel bench legs with adjustable feet.
- Adjustable height 80mm – 105mm

LEG STAND (SUPPLIED AS -LS MODEL)

- Fully modular for matched suite finish
- Framed top for connection to Cooktop
- 63mm dia. heavy-duty 1.2mm 304 stainless steel legs with adjust. feet
- Fully modular framed stand shelf with 0.9mm 304 stainless steel finish
- Quick assembly design (no tools required)

CABINET BASE WITH DOOR (SUPPLIED AS -CD MODEL)

- Fully modular for match suite finish
- Double skin 0.9mm 304 stainless steel interior and exterior
- Double skin door with enamelled exterior panel
- Optional GN 1/1 4 position racking kit
- 63mm dia. heavy-duty 1.2mm 304 stainless steel legs with adjust. feet

CONTROLS

COOKTOP

- Large easy use control knob - heat resistant reinforced
- Easy view control settings on knob
- Cast iron hot plate elements with 6 heat position switch
- Power indicator light for each element control

CLEANING AND SERVICING

- All models with easy clean stainless steel external finish
- One-piece worktop with formed hob wells contain spills
- Access to all parts from front of unit

Series Options

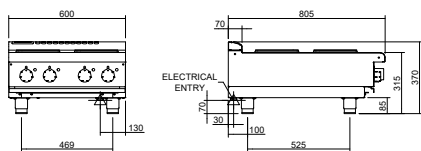
RNLB - Low back models

RNB - 215mm splashback option

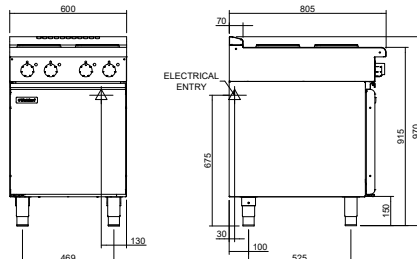
Electric Cooktops 600mm - Sealed Hobs

RNLB8400SE-B, RNLB8400SE-LS, RNLB8400SE-CD

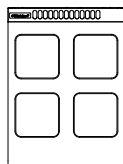
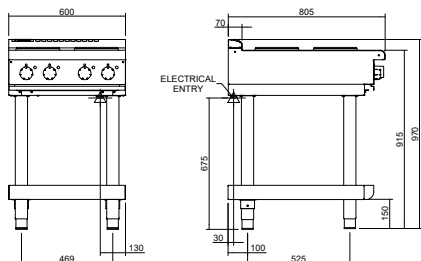
RNLB8400SE-B



RNLB8400SE-CD



RNLB8400SE-LS



SPECIFICATIONS

Cooktop

2.6kW Cast iron hot plate element

Electrical requirements

RNLB8400SE

10.4 kW, 400-415Vac, 50/60Hz, 2P+N+E,

22A

Electrical connection

130mm from RH side, 30mm from rear

70mm from bench height on bench models

675mm from floor on leg stand and cabinet base models

Dimensions

Bench models

Width 600mm

Depth 805mm

Height 315mm

Incl. low back 370mm

Incl. splashback option 530mm

All models (excluding Bench model)

Width 600mm

Depth 805mm

Height 915mm

Incl. low back 970mm

Incl. splashback option 1130mm

Nett weight

Bench and Leg Stand models

74kg

Cabinet Base models

79kg

Packing data

Bench and Leg Stand models

0.37m³, 110kg

Width 645mm

Depth 870mm

Height 665mm

Cabinet Base and models

0.70m³, 131kg

Width 645mm

Depth 870mm

Height 1255mm

MOFFAT

moffat.com.au

moffat.co.nz

Australia

moffat.com.au

Moffat Pty Limited

Victoria/Tasmania
740 Springvale Road
Mulgrave, Victoria 3170
Telephone +613-9518 3888
Facsimile +613-9518 3833
vsales@moffat.com.au

New South Wales
Telephone +612-8833 4111
nswsales@moffat.com.au

South Australia
Telephone -613-9518 3888
vsales@moffat.com.au

Queensland
Telephone +617-3630 8600
qldsals@moffat.com.au

Western Australia
Telephone 618-9413 2400
wasales@moffat.com.au

New Zealand

moffat.co.nz

Moffat Limited

Rolleston
45 Illinois Drive
Izone Business Hub
Rolleston 7675
Telephone +64 3-983 6600
Facsimile +64 3-983 6660
sales@moffat.co.nz

Auckland

Telephone +64 9-574 3150
sales@moffat.co.nz



ISO9001
Quality
Management
Standard

Designed and manufactured by



ISO9001

All Waldorf Bold products are designed and manufactured by Moffat using the internationally recognised ISO9001 quality management system, covering design, manufacture and final inspection, ensuring consistent high quality at all times.

In line with policy to continually develop and improve its products, Moffat Limited reserves the right to change specifications and design without notice.

© Copyright Moffat Ltd
AN.WBD.S.01.22

an Ali Group Company



The Spirit of Excellence