

WD-18CW-P2

DOUBLE ROLLER DOOR TROLLEY DISHWASHER PIT MOUNTED MODEL

STANDARD FEATURES:

- Double roller door trolley washer, allows for separation between loading and unloading of trolleys
- Pit mounted trolley washers suitable for new installations
- 30-40 wash cycles per hour
- 6 litres per cycle cold water consumption
- 200 litre wash tank volume
- 6 levels of wash cycle for varying types of soiled product
- Maximum 250kg load capacity
- 2.2kW wash pump with 12kW booster heater
- Standard trolley size suitable W 1070mm x D 1030mm x H 1850mm
- Loading and unloading is performed at the same level as the floor
- Recess in the floor must be 200mm deep
- Suitable for narrow space installation

TECHNICAL INFORMATION:

Dimensions

Width: 2485mm
Depth: 1975mm
Height: 2638mm

Water

Hot water temperature: 50-70°C
Hot water connection: R ¾"
Hot water pressure: 100-600kPa
Cold water temperature: 5-12°C
Cold water connection: R ¾"
Cold water pressure: 300kPa
Flow: 30 litres per minute
Water quality (Hardness): 2-7odH

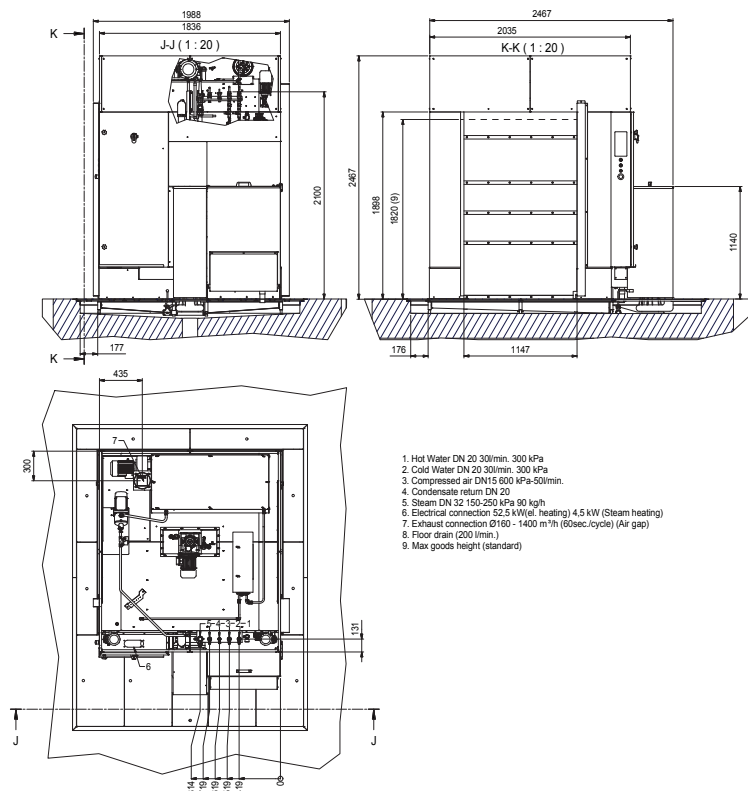
Waste

Connection: 50mm dia direct

Electrical

3P+N+E 400-415V 50/60Hz
52.5kW 80A
with steam heated option
3P+N+E 400-415V 50/60Hz
4.5kW 20A

Refer operator manual for complete installation instructions



Australia

moffat.com.au

Moffat Pty Limited
740 Springvale Road
Mulgrave
Victoria 3170
Australia
Telephone +613-9518 3888
Facsimile +613-9518 3833
vsales@moffat.com.au

New Zealand

moffat.co.nz

Moffat Limited
45 Illinois Drive
Izone Business Hub
Rolleston 7675
New Zealand
Telephone +64 3-983 6600
Facsimile +64 3-983 6660
sales@moffat.co.nz

In line with policy to continually develop and improve its products, Moffat Limited reserves the right to change specifications and design without notice.