

WD-215T COMPACT TRAY DISHWASHER

STANDARD FEATURES:

- 1200 tray capacity per hour
- 150 litres per hour cold water consumption
- 1.5kW wash pump with 12kW booster heater
- 100 litres wash tank volume
- Electronic control system for wash cycle selection
- HACCP function
- 370mm high wash chamber clearance
- Heat and sound insulation
- Removable doors for ease of cleaning

Upgrades and options are available, please contact Moffat for more details

TECHNICAL INFORMATION:

Dimensions

Width: 2535mm
Depth: 697mm
Height: 1775mm

Water

Hot water temperature: 55-70°C
Hot water connection: R1½"
Hot water pressure: 100-600kPa
Cold water temperature: 5-12°C
Cold water connection: R1½"
Cold water pressure: 250-600kPa
Flow: 11 litres per min
Water quality (Hardness): 2-7odH

Waste

Connection: 50mm dia
Floor drain, capacity:
3 litres per second

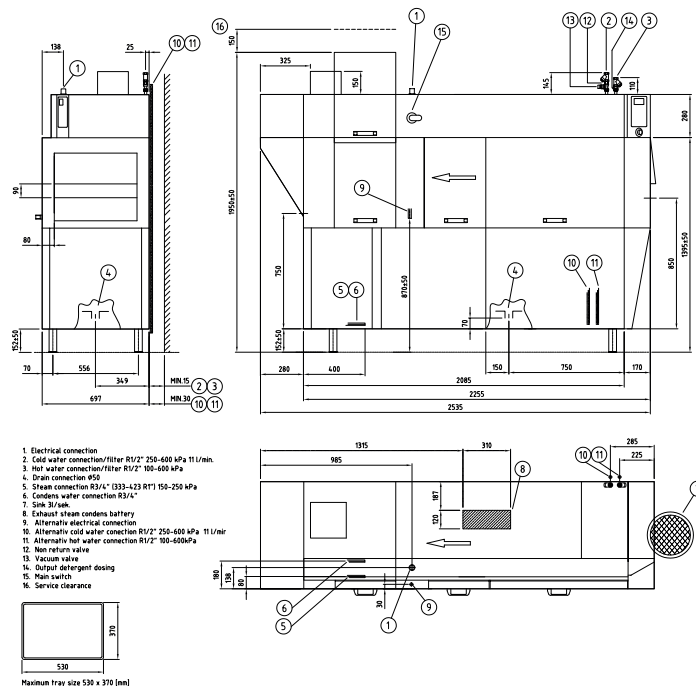
Electrical

3P+N+E 400-415V 50/60Hz
36kW 63A

Steam Heated

150-250 kpa @50kg ph
3P+N+E 400-415V 50/60Hz
12kW 32A

Refer operator manual for
complete installation instructions



Australia

moffat.com.au

Moffat Pty Limited
740 Springvale Road
Mulgrave
Victoria 3170
Australia
Telephone +613-9518 3888
Facsimile +613-9518 3833
vsales@moffat.com.au

New Zealand

moffat.co.nz

Moffat Limited
45 Illinois Drive
Izone Business Hub
Rolleston 7675
New Zealand
Telephone +64 3-983 6600
Facsimile +64 3-983 6660
sales@moffat.co.nz

In line with policy to continually develop
and improve its products, Moffat Limited
reserves the right to change specifications
and design without notice.