

## WD-243 ICS+ THREE STAGE RACK CONVEYOR

### STANDARD FEATURES:

- High performance three stage rack conveyor
- Pre-wash zone with intermediate rinse
- Chemical wash zone
- Double final rinse
- 85-260 baskets per hour standard
- 1.2 litres cold water consumption per cycle
- 177 litre wash tank volume including pre-wash tank
- 2 x 1.5kW wash pump with 12kW booster heater
- ICS+ 'intelligent control system' including ESE, CRT and DTS
- High performance heat recovery system
- Electronic control system
- Easy to use control panel to adjust contact time
- Upper and lower angled wash and rinse arms
- Lightweight wash arms can be easily removed for cleaning
- Self-emptying pumps in wash and rinse zones
- Easy to access large filters and strainer baskets for less frequent emptying
- Drain pipe positioned on the frame of machine for easy cleaning
- Tank can be emptied using easy access lever
- HACCP function
- Removable front door for easy cleaning
- Stainless steel construction
- Condensate coil and heat exchanger to simultaneously reduce heat emissions and heat incoming cold water
- Fully insulated doors and panels
- Double final rinse

Upgrades and options are available, please contact Moffat for more details

### TECHNICAL INFORMATION:

#### Dimensions

Width: 2255mm  
Depth: 697mm  
Height: 1675mm

#### Water

Hot water temperature: 55-70°C  
Hot water connection: R1½"  
Hot water pressure: 100-600kPa  
Cold water temperature: 5-12°C  
Cold water connection: R1½"  
Cold water pressure: 250-600kPa  
Flow: 11 litres per min  
Water quality (Hardness): 2-7odH

#### Waste

Connection: 50mm dia direct  
Floor drain, capacity:  
3 litres per second

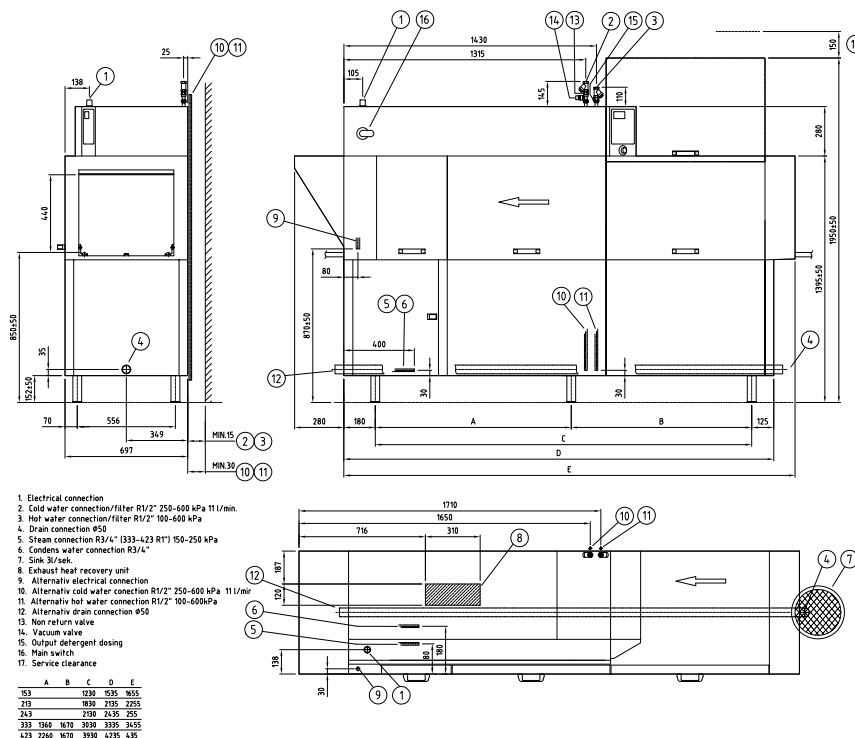
#### Electrical

3P+N+E 400-415V 50/60Hz  
40.1kW 63A

#### Steam Heated

150-250 kpa @50kg ph  
3P+N+E 400-415V 50/60Hz  
3.4kW 20A

Refer operator manual for  
complete installation instructions



### Australia

[moffat.com.au](http://moffat.com.au)

Moffat Pty Limited  
740 Springvale Road  
Mulgrave  
Victoria 3170  
Australia  
Telephone +613-9518 3888  
Facsimile +613-9518 3833  
vsales@moffat.com.au

### New Zealand

[moffat.co.nz](http://moffat.co.nz)

Moffat Limited  
45 Illinois Drive  
Izone Business Hub  
Rolleston 7675  
New Zealand  
Telephone +64 3-983 6600  
Facsimile +64 3-983 6660  
sales@moffat.co.nz

In line with policy to continually develop  
and improve its products, Moffat Limited  
reserves the right to change specifications  
and design without notice.