

WD-B 600 FLIGHT TYPE DISHWASHER

STANDARD FEATURES:

- 2907 plates per hour standard up to 3750 plates per hour depending on configuration according to DIN10510
- 170-220 litres per hour cold water consumption for normal final rinse
- Loading zone - 900mm
- Pre-wash zone - 1000mm
- Chemical wash zone - 1000mm
- Double final rinse zone - 1125mm
- Drying zone - 900mm
- Outfeed - 1125mm
- Total length - 6025 mm
- Condensate coil and heat exchanger to simultaneously reduce heat emissions and heat incoming cold water
- Fully insulated doors and panels
- Steam hood

Upgrades and options are available, please contact Moffat for more details

TECHNICAL INFORMATION:

Dimensions

Width: 6025mm
Depth: 1038mm
Height: 2020mm

Water

Hot water temperature: 50-70°C
Hot water connection: R $\frac{3}{4}$ "
Cold water temperature: 5-12°C
Cold water connection: R $\frac{3}{4}$ "
Pressure: 300-600kPa
Flow: 18 litres per min
Water quality (Hardness): 2-7odH

Waste

Connection: 50mm dia

Electrical

3P+N+E 400-415V 50/60Hz
46kW 80A

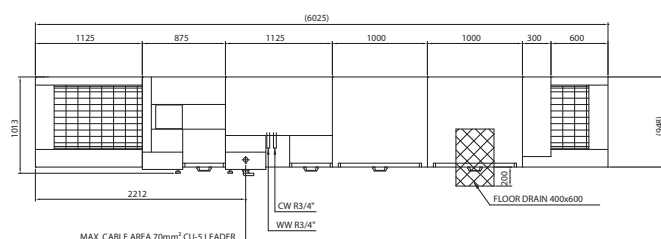
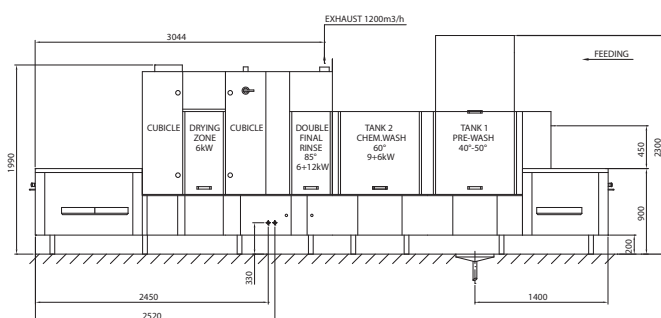
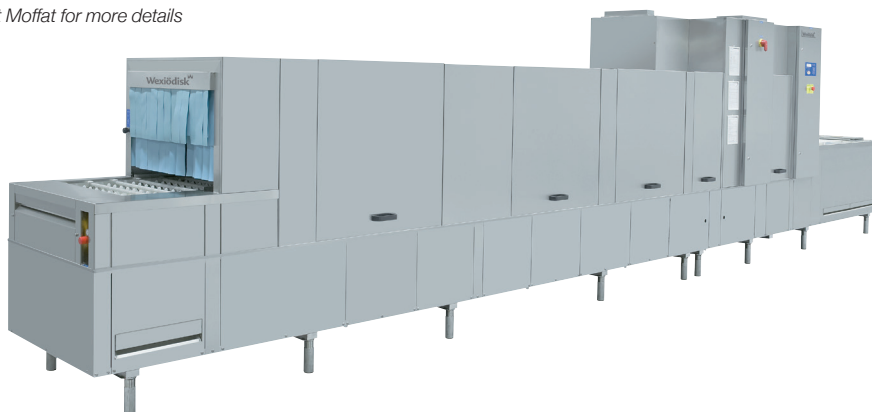
Steam Heated 50-140 kpa

3P+N+E 400-415V 50/60Hz
14.4kW 35A

Steam Heated 150-250 kpa

3P+N+E 400-415V 50/60Hz
4.8kW 20A

Refer operator manual for complete installation instructions



Australia

moffat.com.au

Moffat Pty Limited
740 Springvale Road
Mulgrave
Victoria 3170
Australia
Telephone +613-9518 3888
Facsimile +613-9518 3833
vsales@moffat.com.au

New Zealand

moffat.co.nz

Moffat Limited
45 Illinois Drive
Izone Business Hub
Rolleston 7675
New Zealand
Telephone +64 3-983 6600
Facsimile +64 3-983 6660
sales@moffat.co.nz

In line with policy to continually develop and improve its products, Moffat Limited reserves the right to change specifications and design without notice.