

## WD-B 800 FLIGHT TYPE DISHWASHER

### STANDARD FEATURES:

- 4000 plates per hour standard up to 5140 plates per hour depending on configuration according to DIN10510
- 190-240 litres per hour cold water consumption for normal final rinse
- Loading zone - 900mm
- Pre-wash zone - 1000mm
- Chemical wash zone - 2000mm
- Double final rinse zone - 1125mm
- Double drying zone - 1500mm
- Outfeed - 1500mm
- Total length 8025 mm
- Condensate coil and heat exchanger to simultaneously reduce heat emissions and heat incoming cold water
- Fully insulated doors and panels

Upgrades and options are available, please contact Moffat for more details

### TECHNICAL INFORMATION:

#### Dimensions

Width: 8025mm  
Depth: 1038mm  
Height: 2020mm

#### Water

Hot water temperature: 50-70°C  
Hot water connection: R $\frac{3}{4}$ "  
Cold water temperature: 5-12°C  
Cold water connection: R $\frac{3}{4}$ "  
Pressure: 300-600kPa  
Flow: 18 litres per min  
Water quality (Hardness): 2-70dH

#### Waste

Connection: 50mm dia

#### Electrical

3P+N+E 400-415V 50/60Hz  
54kW 80A

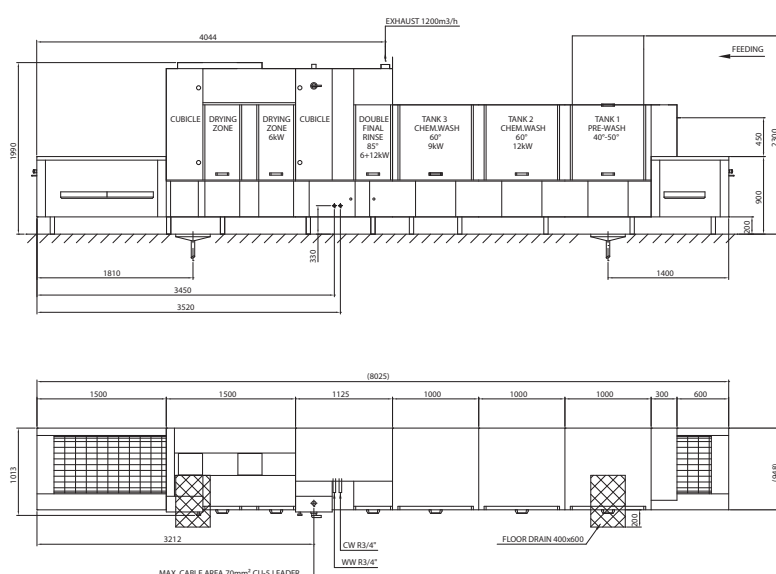
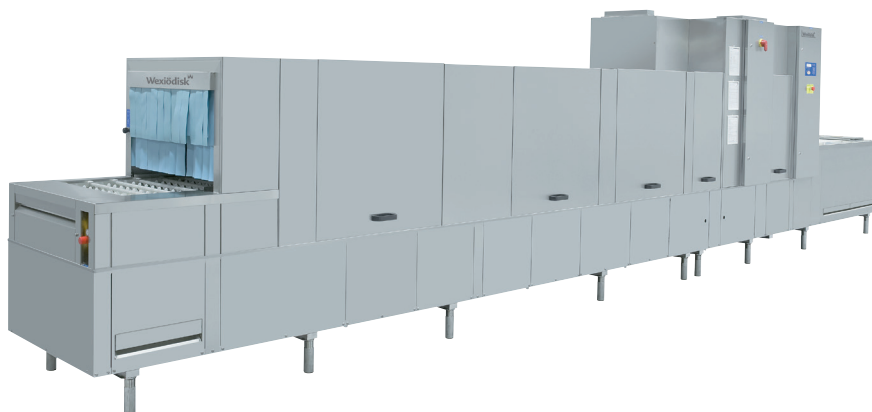
#### Steam Heated 50-140 kpa

3P+N+E 400-415V 50/60Hz  
14.4kW 35A

#### Steam Heated 150-250 kpa

3P+N+E 400-415V 50/60Hz  
4.8kW 20A

Refer operator manual for complete installation instructions



### Australia

[moffat.com.au](http://moffat.com.au)

Moffat Pty Limited  
740 Springvale Road  
Mulgrave  
Victoria 3170  
Australia  
Telephone +613-9518 3888  
Facsimile +613-9518 3833  
[vsales@moffat.com.au](mailto:vsales@moffat.com.au)

### New Zealand

[moffat.co.nz](http://moffat.co.nz)

Moffat Limited  
45 Illinois Drive  
Izone Business Hub  
Rolleston 7675  
New Zealand  
Telephone +64 3-983 6600  
Facsimile +64 3-983 6660  
[sales@moffat.co.nz](mailto:sales@moffat.co.nz)

In line with policy to continually develop and improve its products, Moffat Limited reserves the right to change specifications and design without notice.